

Preliminary
TECHNICAL DATASHEET #TDAX031950
Analog I/O, Relay Output Module

+5V Reference
SAE J1939
NFC
DIN rail mount

P/N: AX031950

Features:

- 1 Isolated CAN port, SAE J1939
- 1 Universal Signal Input (Bipolar or Unipolar Voltage, Current, Digital, PWM or Frequency type)
- 1 Analog Output (0-5V, 0-10V, 0-20mA or 4-20mA)
- 1 Form C NC Relay Output
- +5V Reference
- Operational 4...36 Vdc (12 Vdc or 24 Vdc)
- DIN rail mount, screw terminals
- Electronic Assistant AX070502 can be used for complex parameter configuration
- A Near Field Communications Antenna is provided for simple configuration using an Android Smartphone:
 - Place the phone next to the antenna and configure while unpowered.
 - The E-Write NFC Android Application provides flexible user configurability for application-specific input-output relationship with slope or time response.
 - Protected and secure communications



Applications:

- Industrial automation applications

Ordering Part Numbers:

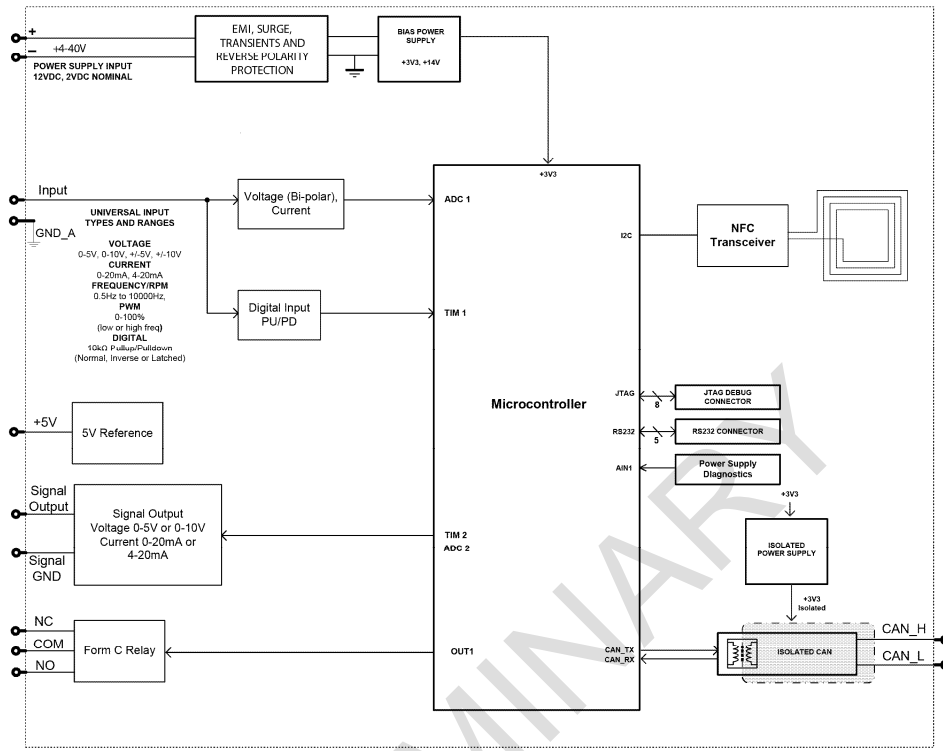
Analog I/O, Relay Output Module: **AX031950**

Accessories:

Electronic Assistant®: **AX070502**

E-WRITE NFC Application is available from the Google Play Store for simple configurations.

BLOCK DIAGRAM



Technical Specifications:

Specifications are indicative and subject to change. Actual performance will vary depending on the application and operating conditions. Users should satisfy themselves that the product is suitable for use in the intended application. All our products carry a limited warranty against defects in material and workmanship. Please refer to our Warranty, Application Approvals/Limitations and Return Materials Process as described on www.axiomatic.com/service.html.

Power

Power Supply Input	12Vdc or 24 Vdc nominal 4...36 Vdc power supply range
Protection	Reverse polarity protection up to 60V. Under-voltage protection is down to 4.5V. Overvoltage protection is up to 40 V.
Reference Voltage	1 +5V, +/- 1%, 100 mA

Input

Input	1 Universal Signal Input User selectable as Bipolar or Unipolar Voltage, Current, Digital, Frequency, or PWM input types. Refer to Table 1.0.
-------	---

Table 1.0 –User Programmable Universal Signal Inputs																																									
Analog & Digital Input Functions	Voltage Input, Current Input, or Digital Input																																								
Voltage Input	0-5 V (Impedance 100 k Ω) 0-10 V (Impedance 100 k Ω) +/- 5V (Impedance 100 k Ω) +/- 10V (Impedance 100 k Ω) Resolution is +/- 1mV. Accuracy is +/-0.5%																																								
Current Input	0-20 mA (Impedance 124 Ω) 4-20 mA (Impedance 124 Ω) Resolution is +/- 1 μ A. Accuracy is +/- 0.2%.																																								
Digital Input Level	Accepts 5 V TTL Accepts up to Vps Threshold: Low <1 V High >2.2 V																																								
Digital Input	1 M Ω Impedance or Active High or Active Low with 10 k Ω m pull-up or pull-down																																								
Timer Input Functions	PWM Input or Frequency Input																																								
PWM Input	Low Frequency (0.50 Hz to 1 kHz) High Frequency (100 Hz to 10 kHz) 0 to 100% D.C. Resolution is 0.01%. Accuracy is +/-0.1%.																																								
Frequency/RPM Input	0.5 Hz to 50 Hz; 10 Hz to 1 kHz; or 100 Hz to 20 kHz Resolution is 0.01%. Accuracy is +/-0.1%.																																								
Maximum and Minimum Ratings	<table border="1"> <thead> <tr> <th>Characteristic</th> <th>Min</th> <th>Max</th> <th>Units</th> </tr> </thead> <tbody> <tr> <td>Power Supply</td> <td>9</td> <td>36</td> <td>V dc</td> </tr> <tr> <td>Voltage Input</td> <td>0</td> <td>36</td> <td>V dc</td> </tr> <tr> <td>Current Input 0(4)-20 mA</td> <td>0</td> <td>12</td> <td>Vdc</td> </tr> <tr> <td>Digital Input</td> <td>0</td> <td>36</td> <td>Vdc</td> </tr> <tr> <td>PWM Duty Cycle</td> <td>0</td> <td>100</td> <td>%</td> </tr> <tr> <td>PWM Low Frequency</td> <td>10</td> <td>1 000</td> <td>Hz</td> </tr> <tr> <td>PWM High Frequency</td> <td>100</td> <td>10 000</td> <td>Hz</td> </tr> <tr> <td>PWM Voltage pk - pk</td> <td>0</td> <td>36</td> <td>V dc</td> </tr> <tr> <td>Frequency</td> <td>0</td> <td>20 000</td> <td>Hz</td> </tr> </tbody> </table>	Characteristic	Min	Max	Units	Power Supply	9	36	V dc	Voltage Input	0	36	V dc	Current Input 0(4)-20 mA	0	12	Vdc	Digital Input	0	36	Vdc	PWM Duty Cycle	0	100	%	PWM Low Frequency	10	1 000	Hz	PWM High Frequency	100	10 000	Hz	PWM Voltage pk - pk	0	36	V dc	Frequency	0	20 000	Hz
Characteristic	Min	Max	Units																																						
Power Supply	9	36	V dc																																						
Voltage Input	0	36	V dc																																						
Current Input 0(4)-20 mA	0	12	Vdc																																						
Digital Input	0	36	Vdc																																						
PWM Duty Cycle	0	100	%																																						
PWM Low Frequency	10	1 000	Hz																																						
PWM High Frequency	100	10 000	Hz																																						
PWM Voltage pk - pk	0	36	V dc																																						
Frequency	0	20 000	Hz																																						
GND	1 Analog GND connection is provided.																																								

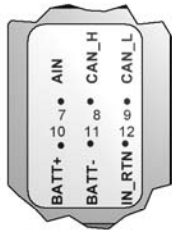
Outputs

Output	1 Form C Relay NC 3 contact pins per output Max. 2A @ 250Vac or 2A @ 30Vdc per contact
Analog Output	1 Analog Output, user selectable as: 0-5V, 0-10V (+/- 0.2% accuracy) 0-20mA, 4-20mA (+/- 0.2% accuracy)
Analog Output GND	1 GND connection is provided.

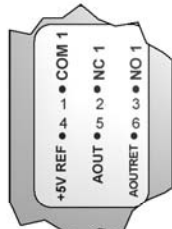
General Specifications

Microprocessor	STM32F205RE, 32-bit, 512 Kbytes Flash Program Memory																										
Isolation	300 Vrms CAN bus Isolation																										
Typical Quiescent Current	Contact Axiomatic.																										
Control Logic	Standard embedded software is provided.																										
Communications	1 Isolated CAN port (SAE J1939)																										
NFC Communications	Near Field Communication Full-duplex Data rate: 106 <u>kbit/s</u> Complies with ISO1443 (RF protocol), ISO13239, and ISO7816 Protected and secure configuration																										
User Interface via NFC	E-WRITE NFC Application is available from the Google Play Store for simple configurations.																										
Software Reflashing	Electronic Assistant® P/N: AX070502																										
User Interface via CAN	Electronic Assistant® P/N: AX070502																										
LED Indicator	1 Red and Green LED with application-specific responses																										
Operating Conditions	-40 to 85 °C (-40 to 185 °F)																										
Storage Temperature	-55 to 125 °C (-67 to 257°F)																										
Protection	IP40 (housing), Terminals IP20																										
Weight	Contact Axiomatic.																										
Enclosure	DR12, 35 mm DIN rail mount Polycarbonate 75 x 98.5 x 22.5 mm (W x H x D) 2.95 x 3.88 x 0.89 inches Refer to the dimensional drawing.																										
Electrical Connections	12 Screw terminal connections Refer to dimensional drawing for pin out orientation. <table border="1" data-bbox="625 982 1308 1394"> <thead> <tr> <th>Screw Terminal #</th> <th>Description</th> </tr> </thead> <tbody> <tr> <td>1</td> <td>Relay Output COM 1</td> </tr> <tr> <td>2</td> <td>Relay Output NC 1</td> </tr> <tr> <td>3</td> <td>Relay Output NO 1</td> </tr> <tr> <td>4</td> <td>+5V Reference</td> </tr> <tr> <td>5</td> <td>Analog Output</td> </tr> <tr> <td>6</td> <td>Analog Output Return</td> </tr> <tr> <td>7</td> <td>Analog Input</td> </tr> <tr> <td>8</td> <td>CAN_H</td> </tr> <tr> <td>9</td> <td>CAN_L</td> </tr> <tr> <td>10</td> <td>Power +</td> </tr> <tr> <td>11</td> <td>Power -</td> </tr> <tr> <td>12</td> <td>Analog Input GND</td> </tr> </tbody> </table>	Screw Terminal #	Description	1	Relay Output COM 1	2	Relay Output NC 1	3	Relay Output NO 1	4	+5V Reference	5	Analog Output	6	Analog Output Return	7	Analog Input	8	CAN_H	9	CAN_L	10	Power +	11	Power -	12	Analog Input GND
Screw Terminal #	Description																										
1	Relay Output COM 1																										
2	Relay Output NC 1																										
3	Relay Output NO 1																										
4	+5V Reference																										
5	Analog Output																										
6	Analog Output Return																										
7	Analog Input																										
8	CAN_H																										
9	CAN_L																										
10	Power +																										
11	Power -																										
12	Analog Input GND																										

Dimensional Drawing

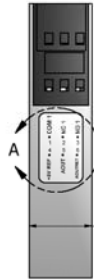


DETAIL B
LH label



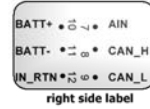
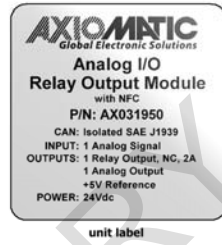
DETAIL A
RH label

↑
this way up on
the DIN rail



0.886 in
[22.50 mm]

to suit 35 mm
DIN rail



PRELIMINARY

Form: TDAX031950-01/14/19