



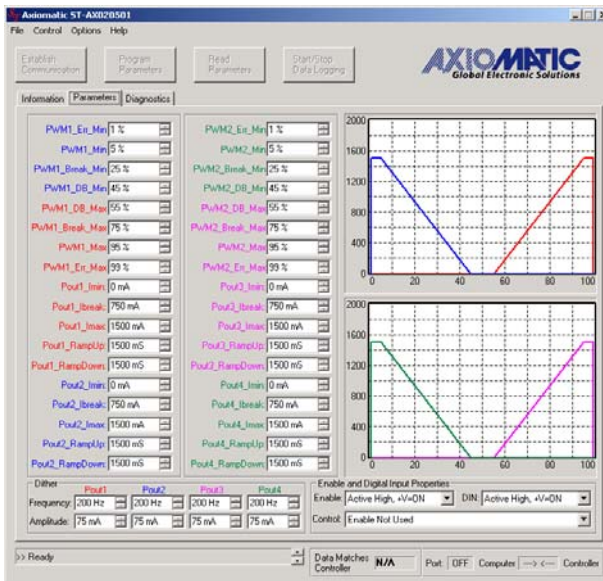
PRESS RELEASE

January 6, 2006 – Mississauga, Ontario, Canada

The quad valve controller provides precise, repeatable control of 4 proportional solenoids and 1 on/off solenoid. User configurable open loop control profiles in the embedded software permit control of proportional poppet or spool valves. PWM signal inputs or analog voltage or current inputs are accepted for interface to a PLC, Engine Control Module or command potentiometers. Multiple switched inputs (digital inputs) are provided to suit a range of applications. A RS-232 port permits user configuration, diagnostics and service via the PC-based Service Tool. CAN (SAE J1939) supports networking with the quad controller acting as a slave in a machine control system. The controller is designed for harsh operating environments.



Quad valve controller with SAE J1939



PC based Service Tool for configuration and diagnostics

Typical applications can include:

- Industrial, off-highway (mobile) and marine applications for the control of hydraulic valves
- Interface with a diesel engine's electronic control module PWM signal to drive accessories
- Transmission controls
- Machine control

Axiomatic operates in Mississauga (Toronto), Canada and Tampere, Finland. As an integrated ISO9001:2000 engineering design and manufacturing firm, our mission is to provide advanced electronic controls for mobile, marine, mining, military and industrial equipment OEM's.

Visit us at Intermat 2006, Booth# 5a D 081, in Paris, France, April 24-29, 2006.

For more information, contact:
Amanda Wilkins, Marketing Manager
1-905-602-9270 x224
amanda.wilkins@axiomatic.com

In Europe:
Axiomatic Technologies Oy
Hepolamminkatu 36 C 3
33720 TAMPERE - Finland
Tel. +358 3 3595 600
Fax. +358 3 3595 660
www.axiomatic.fi

In North America:
Axiomatic Technologies Corporation
5915 Wallace Street
Mississauga, ON Canada L4Z 1Z8
Tel. +001 905 602 9270
Fax. +001 905 602 9279
www.axiomatic.com