

PRESS RELEASE

October 14, 2008 – Mississauga, Ontario, Canada

Dual Valve Controller – 4 Universal Inputs to 2 – 3A Outputs (SAE J1939) with Electronic Assistant™ EA

Axiomatic announces the release of a new multi-purpose Valve Controller with 4 universal signal inputs to 2 - 3A outputs, part number AX021800. This controller is part of a growing line of compact rugged controllers packaged for harsh operating environments.

The Dual Valve Controller is designed to control two proportional or on/off solenoid valves using PWM control from a variety of input sources. It accepts voltage, current, resistance, frequency, PWM, and discrete levels from four universal inputs. One unique feature is its ability to provide accurate power, up to 100 milliamp on each input. It also uses powerful 32 bit processing. The highly versatile AX021800 can also be used to support PID control and hydraulic fan control applications.



Features:

- 4 universal signal inputs
- 2 outputs to drive valves up to 3 A
- 4 +5V Reference Voltages (100 mA)
- 12V, 24V or 48V nominal
- Fully protected outputs
- 1 CAN (SAE J1939) port
- CANopen module available on request
- Rugged IP67 packaging and connectors
- **Electronic Assistant™ EA** together with an Axiomatic USB-CAN converter links the PC to the CAN bus for user configuration.
- **Flexible user programming** for application-specific control logic via the CAN based Electronic Assistant. The controller's internal functional blocks for inputs, outputs and signal conversion or hydraulic control can be mapped to a control structure that suits the application.
- Can be used without a load as a voltage or current signal to CAN converter

Electronic Assistant™ EA

The Electronic Assistant (EA) runs on any modern PC with the Microsoft Windows® 2000 operating system or higher. It comes with a royalty-free license for use.

With connection to the bus, the EA finds all the devices on the bus, and recognizes the Axiomatic controls. The user can quickly configure an Axiomatic control for its desired performance over a wide variety of applications. An Axiomatic **CAN Assistant – Scope and Visual** is also offered to monitor CAN messages in a text format. The CAN tools are useful PC-based diagnostic and debugging tools for J1939 or CANopen networked devices.

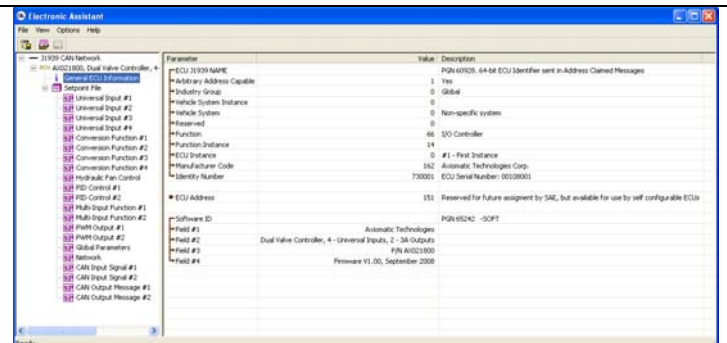


Figure 1.0 Windows-based configuration screen from the Electronic Assistant

Axiomatic is a provider of electronic machine controls, components, and systems to the off-highway, military, power generation, material handling and industrial OEM markets. We provide efficient, innovative solutions that focus on adding value for our customers. We emphasize service and partnership with our customers, suppliers, and employees to build long term relationships and mutual trust.

Contact: Amanda Wilkins, Marketing Manager. TEL: 1-905-602-9270 x224 amanda.wilkins@axiomatic.com

Axiomatic Technologies Oy
 Höytämöntie 6
 33880 LEMPÄÄLÄ - Finland
 Tel. +358 3 3595 600
 Fax. +358 3 3595 660
 www.axiomatic.fi

Axiomatic Technologies Corporation
 Mendelssohn Strasse 12
 D-82049 Pullach, Germany
 Tel. +49 (0) 174 20 75 131
 Fax. +49 (0)89 79355290

Axiomatic Technologies Corporation
 201 North 67th Street
 Broken Arrow, OK USA 74014
 Tel. 1 918 640 6647
 www.axiomatic.com

Axiomatic Technologies Corporation
 5915 Wallace Street
 Mississauga, ON Canada L4Z 1Z8
 Tel. 1 905 602 9270
 Fax. 1 905 602 9279