

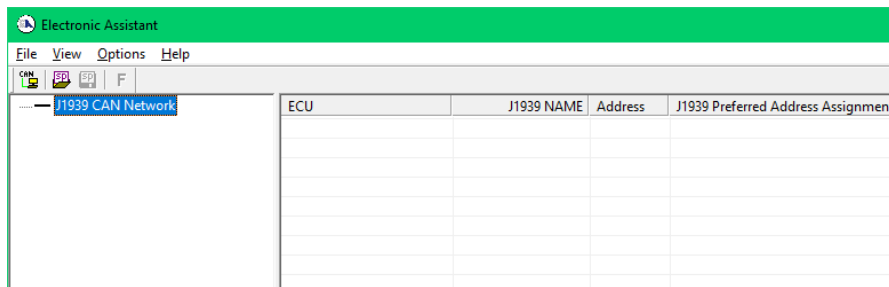
# AN705 – Flashing Setpoint Files

## Introduction

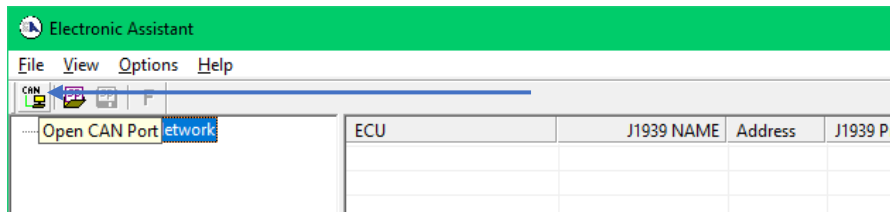
When setpoint files are updated by Axiomatic to work with the customer specifications, a setpoint file flash may be required. The J1939 devices can be upgraded or flashed using the Electronic Assistant®. This is Axiomatic Part Number AX070502.

## Flashing Setpoint Files

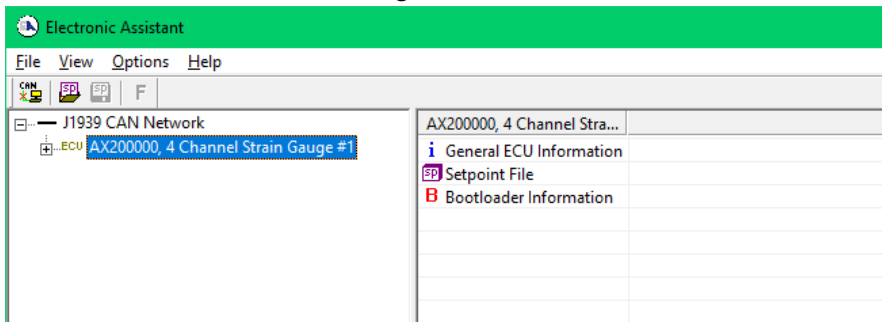
1. Save the setpoint file (.xml file) on your computer drive.
2. Ensure you have the latest release of the Electronic Assistant® software. This is obtained from the website [www.axiomatic.com](http://www.axiomatic.com) from the login section. To obtain the password for this menu contact Axiomatic.
3. Open the Electronic Assistant® program on the computer.



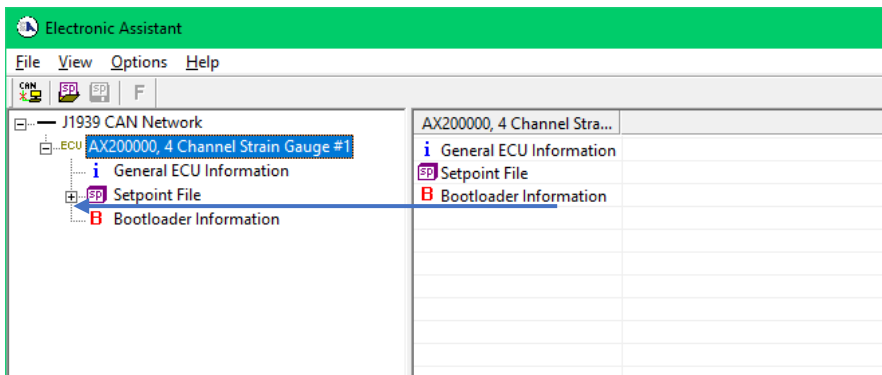
4. Click on the “Open CAN Port” button.



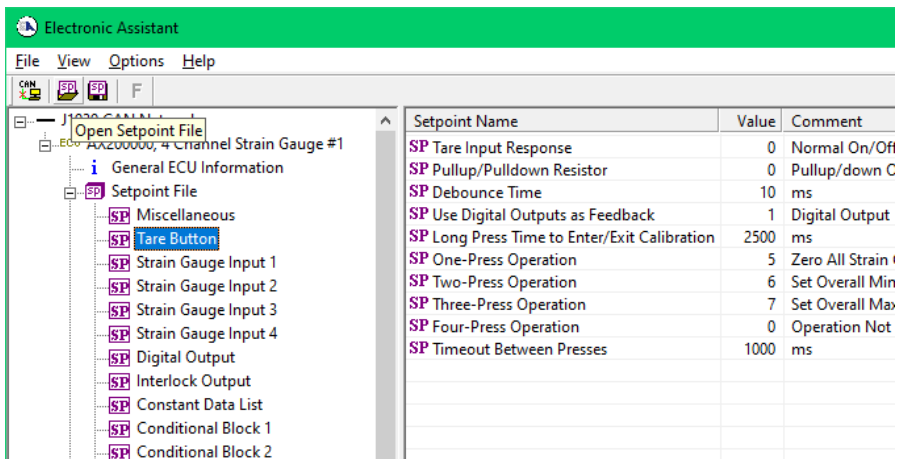
- The Electronic Assistant® will recognize the Axiomatic device.



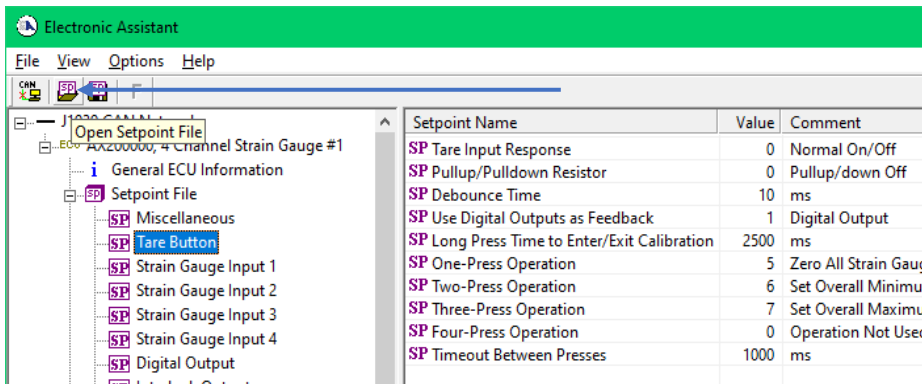
- Expand the J1939 CAN Network Folders by clicking on the + symbol.



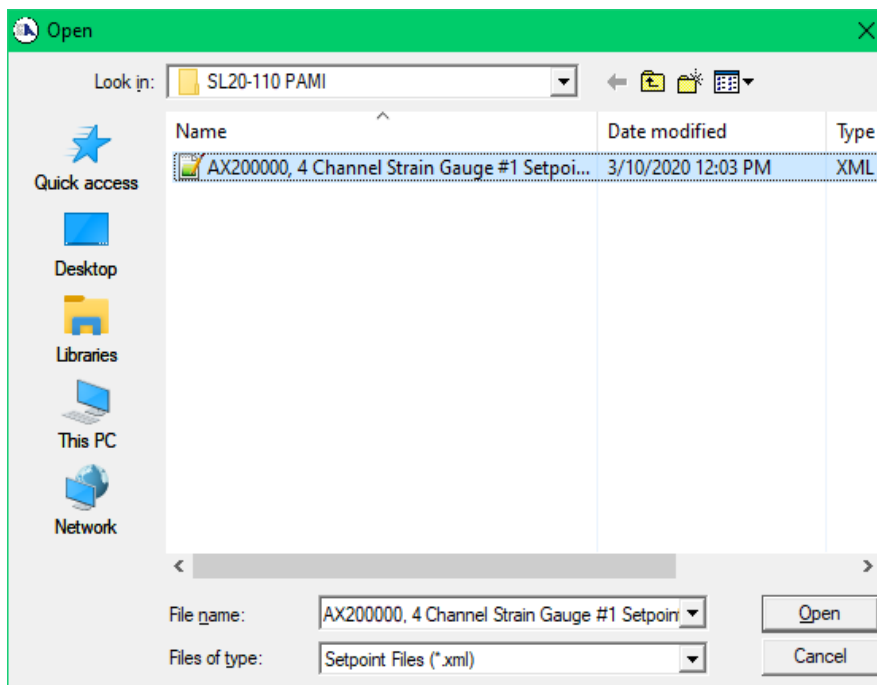
- Highlight any of the setpoint group names from the list on the left-hand side of the menu.



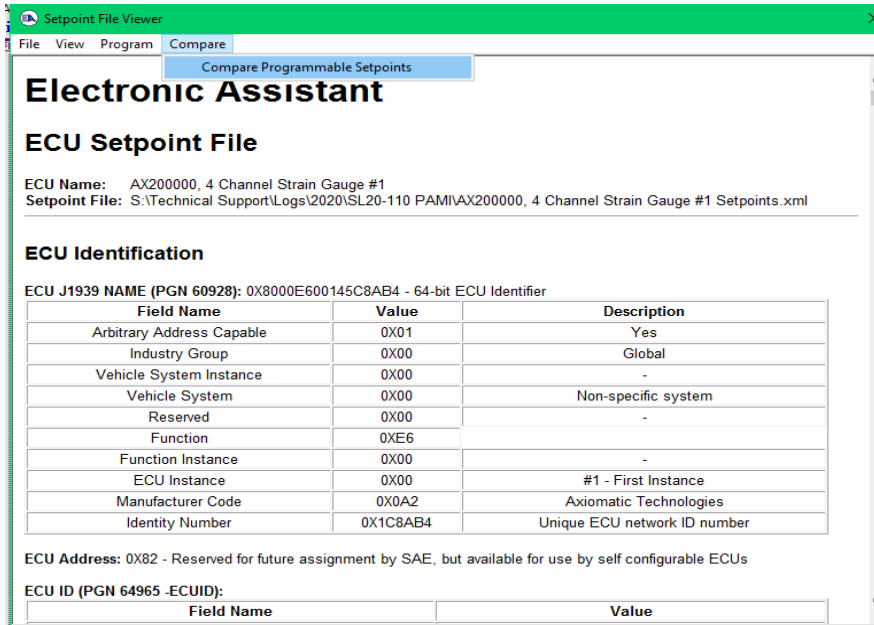
8. Click on Open setpoint file.



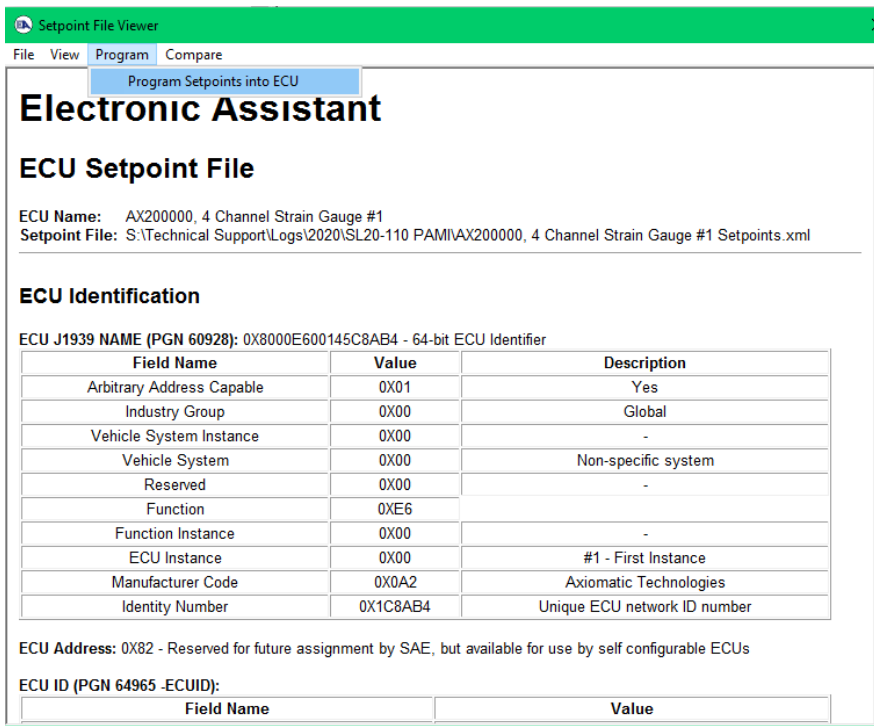
9. Browse on the computer to find the setpoint file previously saved. Select the file and click on open.

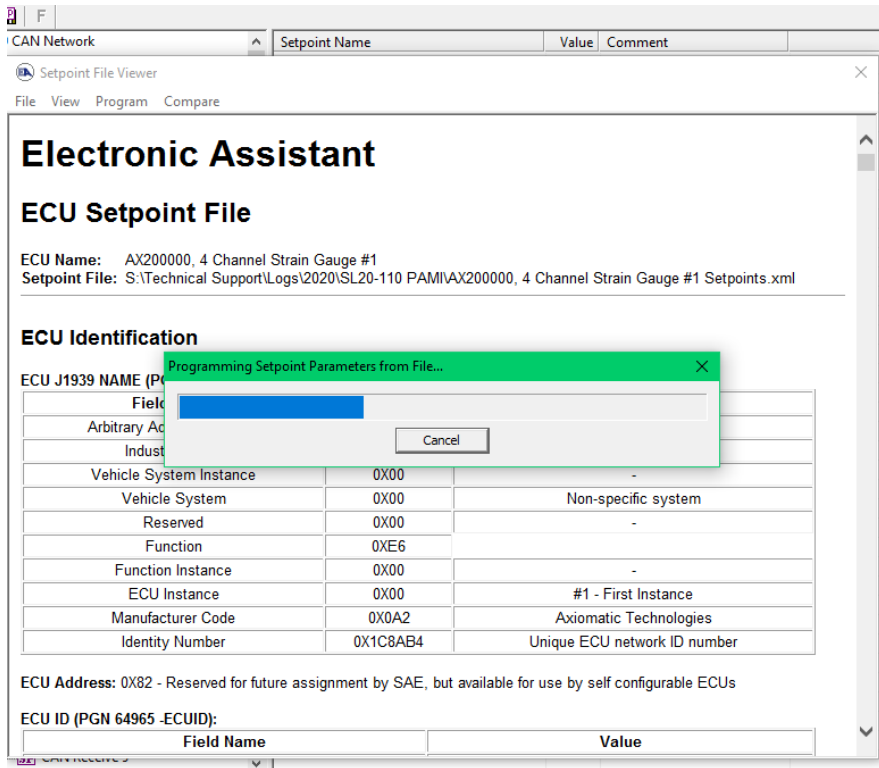


- The setpoint viewer window will open automatically. The setpoint file can be reviewed before flashing. A comparison can also be done between the settings currently saved in the device and the setpoint file to be loaded. To compare, click on the Compare action button at the top of the setpoint viewer and select “Compare Programmable Setpoints”.

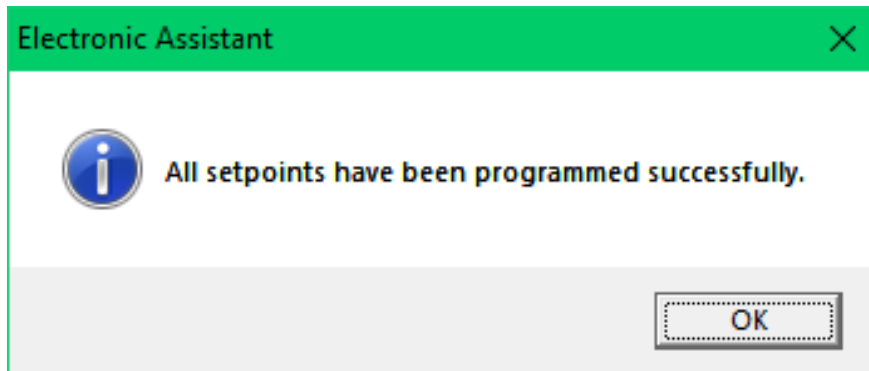


- To flash the setpoint file to the unit, click on the Program button and select “Program Setpoints into ECU”. A progress bar will pop up.





12. Once the unit has been flashed with the setpoint file, the following pop up message will appear.



Version	Date	Author	Comments
1.00	December 16, 2020	Greg Laronde / Sue Thomas	Initial release