

TECHNICAL DATASHEET #TDAX080160
DC/DC 24 V - 140 V 230 W
Axiomatic P/N: AX080160

Features:

- Powers devices at 140Vdc up to 1.65 Amps (230 W)
- On/Off control with low power standby
- Parallel, redundant capability
- Isolation
- 24Vdc nominal voltage input
- Reverse polarity protection
- Inrush current limited
- Operational from -20 to 70°C
- IP20 protection
- DIN rail mount
- Approvals (cURus, CB Marking)



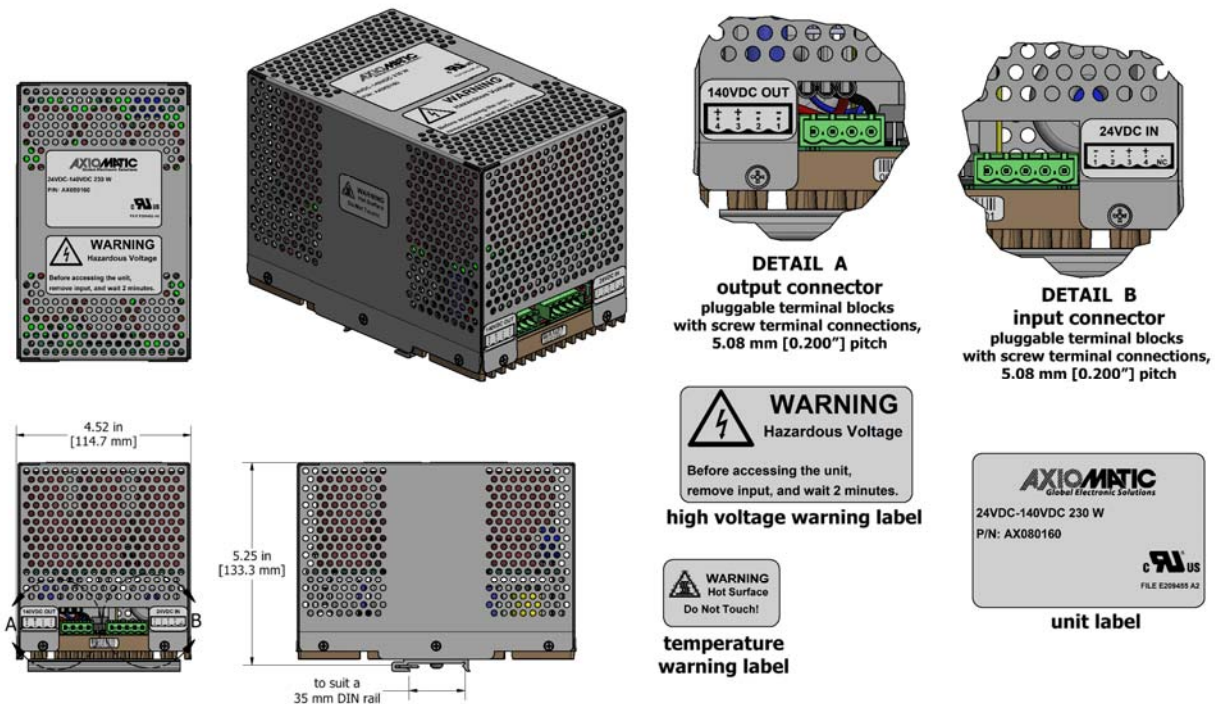
Ordering Part Number:

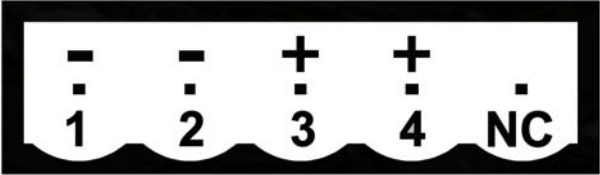
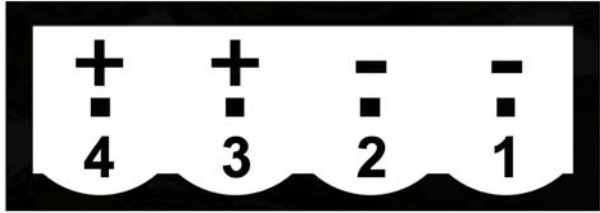
Axiomatic P/N: AX080160

Technical Specifications: Specifications are indicative and subject to change.

Input Specifications		Output Specifications	
Power Source	24 Vdc nominal	Nameplate Rating (Output Power)	230 Watts nominal
Operating Voltage Range	22-32 Vdc continuous	Output Current	1.65 Amps continuous Current limited to 2.5A Transients : 10A 0.6Sec, 20A 0.06Sec, Output min. 90Vdc
Reverse Voltage and Inrush Current Protection	Provided	Output Voltage	140Vdc \pm 7% 0.A to 1.65A Setting, 140Vdc at 0.5A
Over-voltage Shutdown	33 Vdc typical	Line Regulation	\pm 1% max
Under-voltage Shutdown	16 Vdc typical	Output Voltage Ripple	1% maximum
		Turn-on Time (with full load)	3.5 Sec at 22 to 32Vdc input and 0.5 A resistive load
		Output Discharge	15Sec with 0.5A load 120Sec with 0.A load
		Over-voltage Shutdown and Latched	155V typical
		Short Circuit Current	Protection provided Hiccup Self-recovery

Dimensional Drawing



General Specifications		Electrical Connections:
Isolation	500Vdc Input, output and chassis are isolated.	<p>Refer to the dimensional drawing for location.</p> <p>INPUT: One 5-pin male header Wurth Elektronik Series 313 P/N: 691313510005</p>  <p>Mates with pluggable terminal blocks with screw terminal connections, 5.08 mm [0.200"] pitch (supplied with WIELAND 25.340.3553.0, WIELAND 5-PIN PLUG 5.08MM).</p> <p>Use 12 AWG wires.</p> <div style="border: 1px solid black; padding: 2px; width: fit-content;"> <p>WARNING: High Voltage Inside. Remove input power and wait two minutes before accessing power supply.</p> </div> <p>OUTPUT: One 4-pin male header Wurth Elektronik Series 313 P/N: 691313510004</p>  <p>Mates with pluggable terminal blocks with screw terminal connections, 5.08 mm [0.200"] pitch (supplied with WIELAND 25.340.3453.0, WIELAND 4-PIN PLUG 5.08MM).</p> <p>Use 12 AWG wires.</p>
Average Efficiency	92% typical	
Operating Temperature	-20 to 70°C (-4 to 158°F)	
Storage Temperature	-20 to 85°C (-4 to 185°F)	
Humidity	5-95% relative humidity (non-condensing)	
Protection rating	IP20	
Shock	IEC 60068-2-27:2008-02 15g	
Vibration	IEC-60068-2-6:2007-12 2g peak (Sine)	
Compliance	UL Recognition (cURus) UL 60950-1, 2nd Edition, 2011-12-19 (Information Technology Equipment - Safety - Part 1: General Requirements) CAN/CSA C22.2 No. 60950-1-07, 2nd Edition, 2011-12 (Information Technology Equipment - Safety - Part 1: General Requirements) CB marking	
Enclosure and Dimensions	DIN rail, T35 Aluminum enclosure Clear satin MIL-A-8625 anodizing 4.52 x 7.40 x 5.25 inches 114.7 x 187.9 x 133.3 mm (W x L x H including DIN rail)	
Weight	5.90 lb. (2.676 kg)	

Form: TDAX080160-01/08/21