

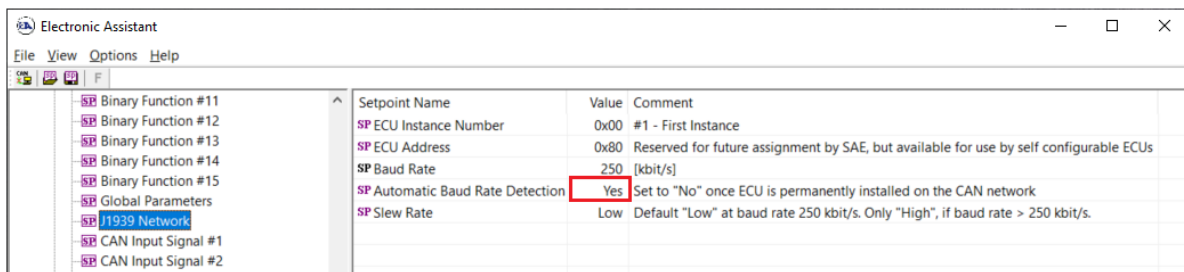
AN715 – How to Disable Auto-Baud-Rate

Introduction

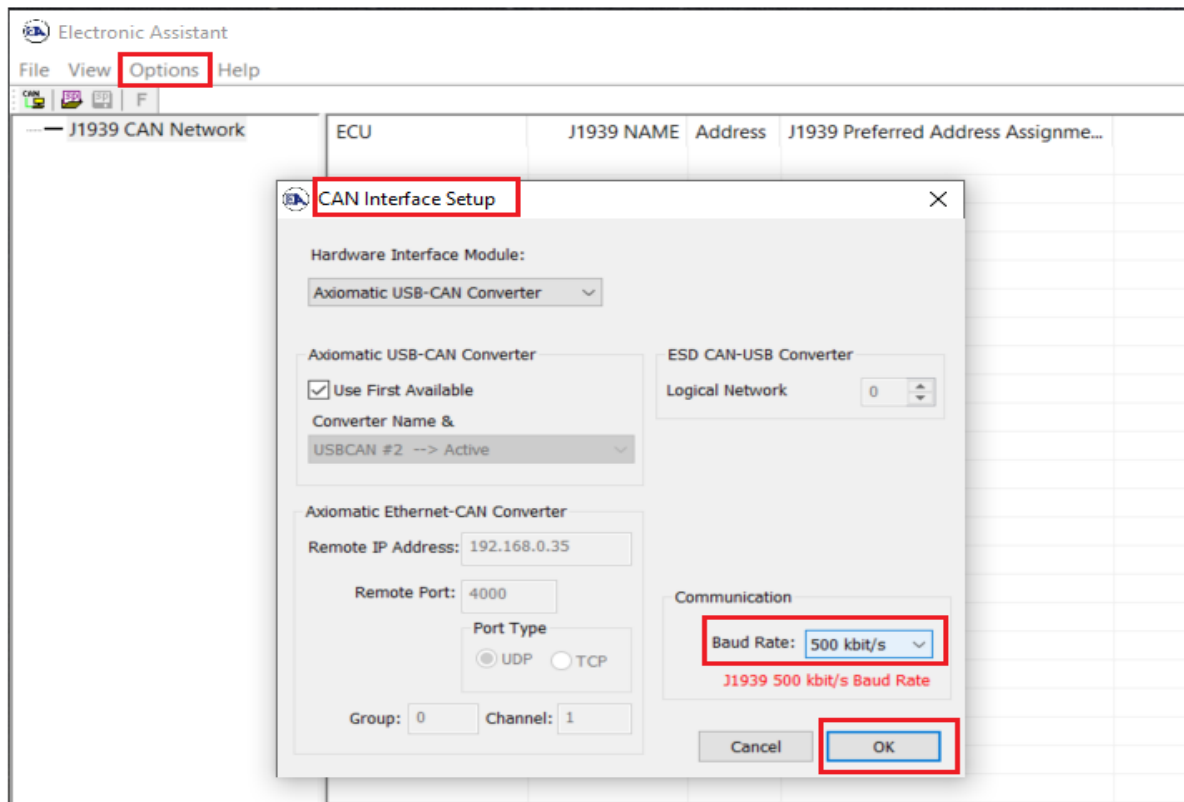
The purpose of this note is to assist you with turning off the Auto-Baud-Rate feature in Axiomatic products and lock the baud rate to a desired option.

Disabling Auto-Baud-Rate

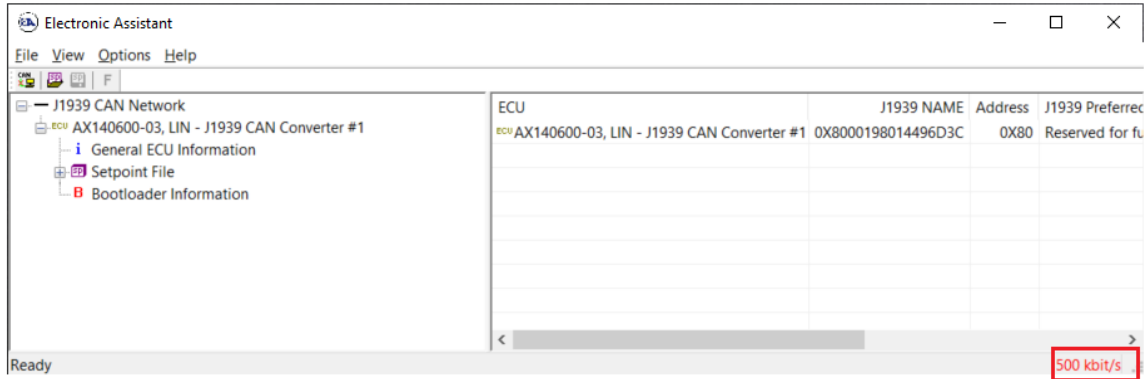
1. Ensure the 'Automatic Baud Rate Detection' is enabled.



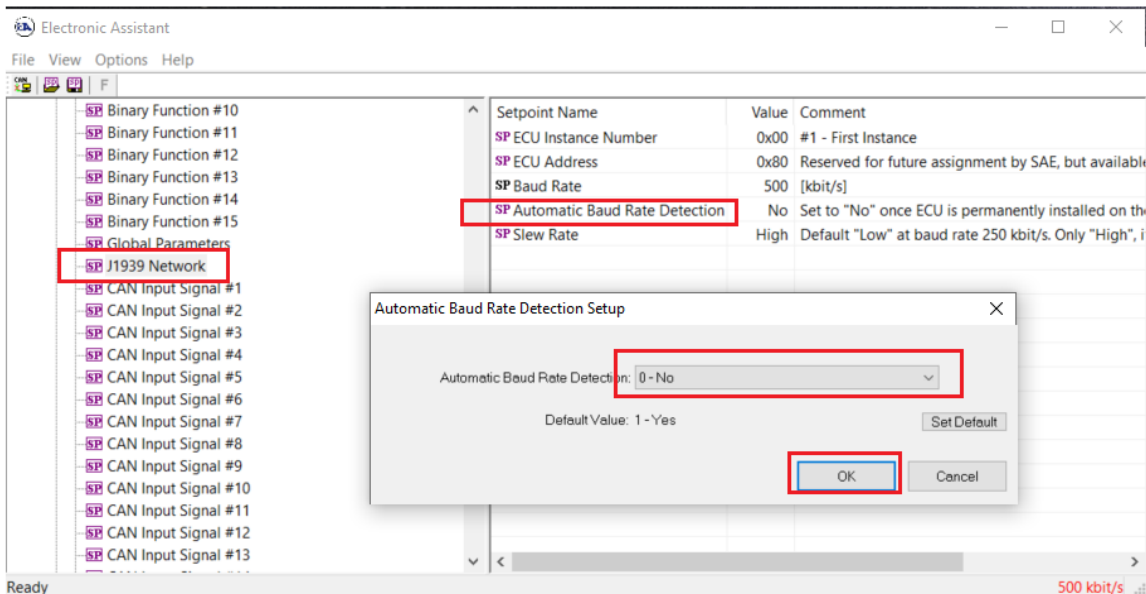
2. Power OFF your Axiomatic product and change the Electronic Assistant baud rate setting to the desired baud rate.



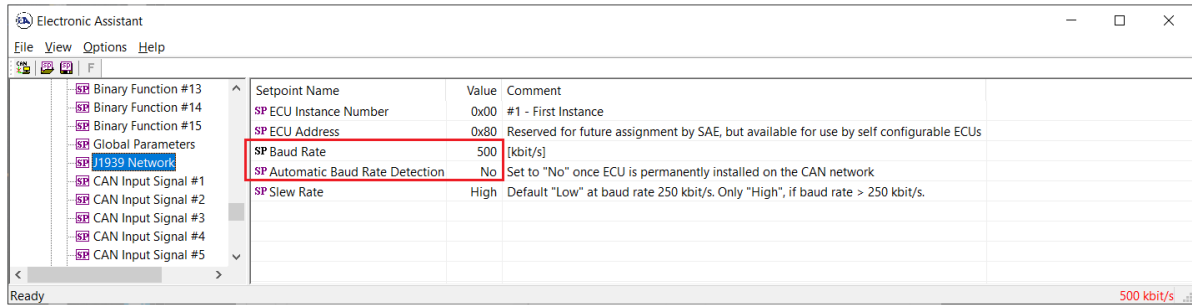
- Power ON the Axiomatic product, and connect by EA. The module should be detected by EA running at the desired baud rate. It has automatically detected the network baud rate by initial communication with service tool.



- Change the 'Automatic Baud Rate Detection' setpoint = NO.



5. Now, the converter is operating permanently at the desired baud rate CAN bus speed (until you activate the automatic detection again).



6. End of procedure.

Version	Date	Author	Comments
1.00	July 8, 2024	Bishoy Mansour	Initial release