


REVISION HISTORY			
REV.	DESCRIPTION	DATE	APPROVED
P1-D1	Initial release	2023-11-03	GDV
P3-D2	PCB CHANGED	2025-06-12	GDV

R.145in
[3.70mm]
to suit 1/4 or
M6 bolt (2)


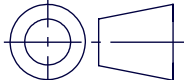


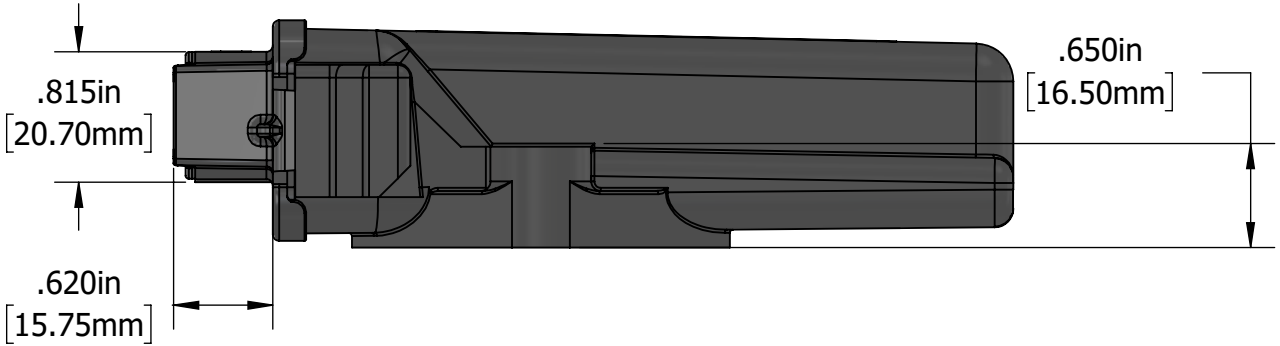
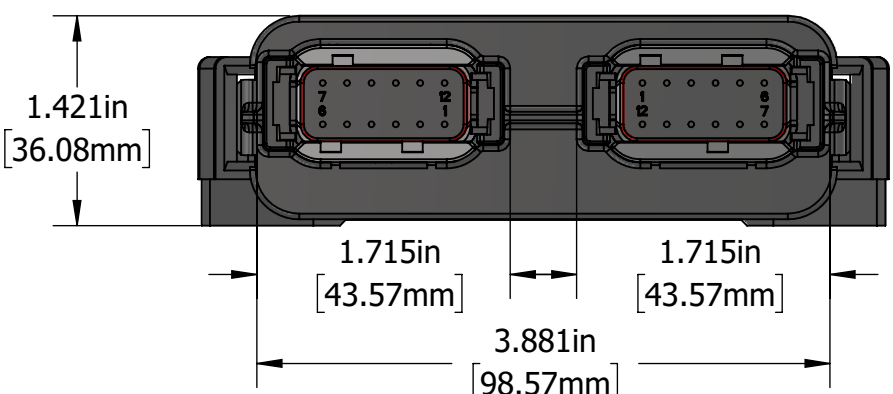
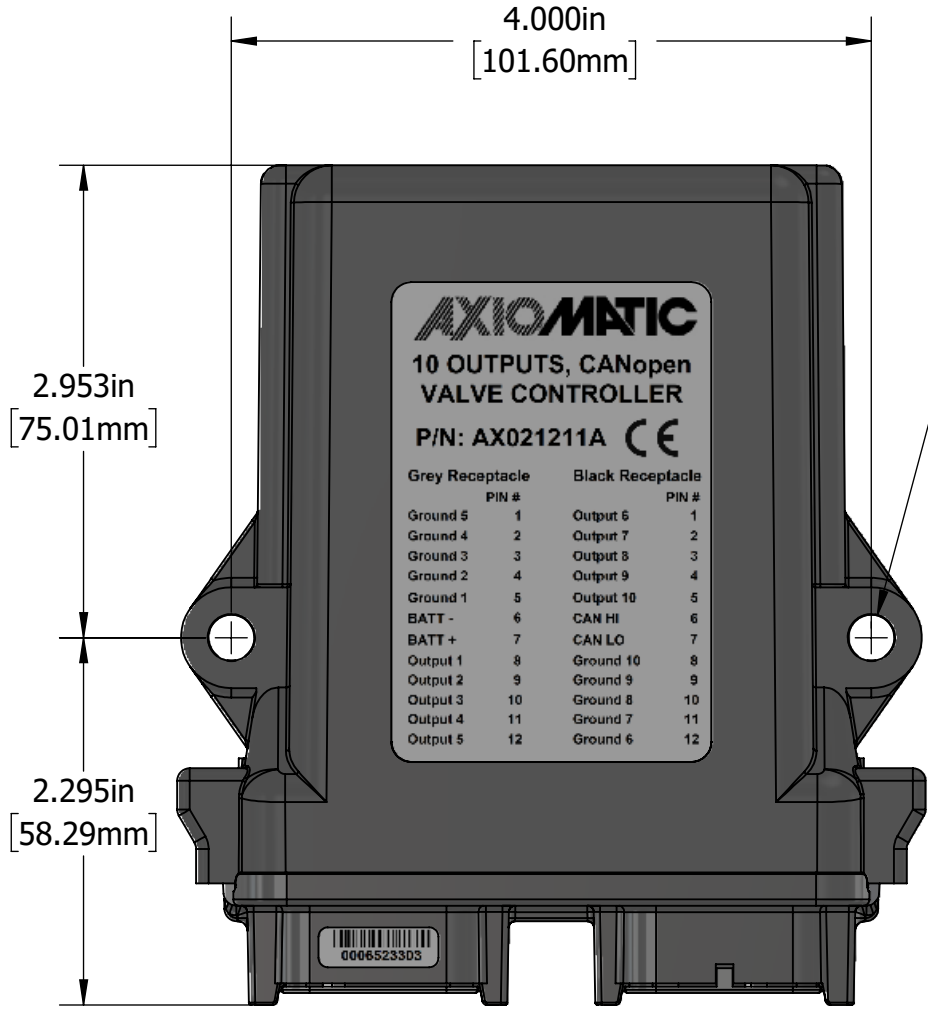
10 OUTPUTS, CANopen VALVE CONTROLLER

P/N: AX021211A 

Grey Receptacle		Black Receptacle	
	PIN #		PIN #
Ground 5	1	Output 6	1
Ground 4	2	Output 7	2
Ground 3	3	Output 8	3
Ground 2	4	Output 9	4
Ground 1	5	Output 10	5
BATT -	6	CAN HI	6
BATT +	7	CAN LO	7
Output 1	8	Ground 10	8
Output 2	9	Ground 9	9
Output 3	10	Ground 8	10
Output 4	11	Ground 7	11
Output 5	12	Ground 6	12

Unit Label Detail

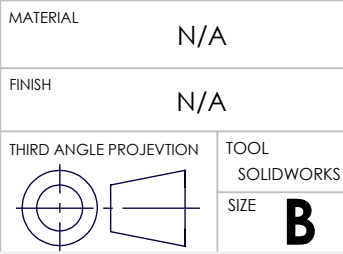
PROPRIETARY AND CONFIDENTIAL				AXIOMATIC TECHNOLOGIES CORPORATION 1445 COURTNEY PARK DR E MISSISSAUGA, ON CANADA L5T2E3 905-602-9270			
THE INFORMATION CONTAINED IN THIS DRAWING IS CONFIDENTIAL AND PROPRIETARY AND REMAINS THE EXCLUSIVE PROPERTY OF AXIOMATIC TECHNOLOGIES CORPORATION. THIS DRAWING MAY NOT BE USED, REPRODUCED IN WHOLE OR IN PART, NOR REVEALED TO OTHERS WITHOUT THE PRIOR WRITTEN CONSENT OF AXIOMATIC TECHNOLOGIES CORPORATION. BY ACCEPTANCE OF THIS DRAWING, THE BEARER AGREES TO THESE CONDITIONS.							
MATERIAL		DRAWN		TITLE:			
N/A		HS		10 outputs, CANopen VALVE CONTROLLER			
FINISH		DATE		DWG REV	DWG NO	PART REV	
N/A		2023-11-03		D2	AX021211A-MD	P3-D2	
THIRD ANGLE PROJECTION		TOOL		SCALE	PART NO	SHEET	
		SOLIDWORKS		1:2	FG-AX021211A	SHEET 1 OF 1	
SIZE		B					



DIMENSIONS ARE IN mm

UNLESS OTHERWISE SPECIFIED
IN DRAWING TOLERANCE ON:

X.X ±0.5
X. ±1
ANGLES ±1.0°



APPROVED

-

DATE

-

SCALE

1:2

PART NO

FG-AX021211A

SHEET

SHEET 1 OF 1