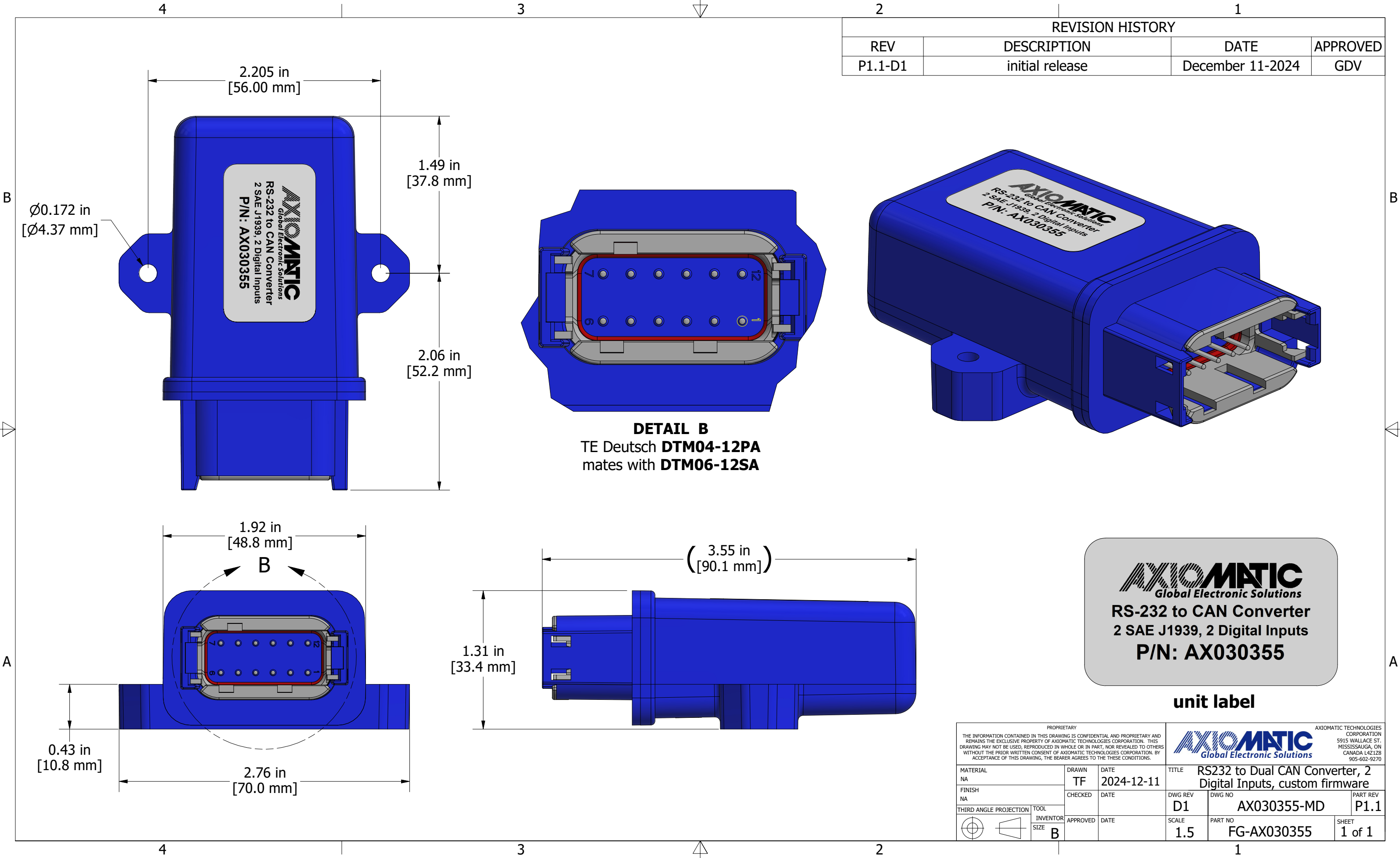


REVISION HISTORY			
REV	DESCRIPTION	DATE	APPROVED
P1.1-D1	initial release	December 11-2024	GDV



PROPRIETARY THE INFORMATION CONTAINED IN THIS DRAWING IS CONFIDENTIAL AND PROPRIETARY AND REMAINS THE EXCLUSIVE PROPERTY OF AXIOMATIC TECHNOLOGIES CORPORATION. THIS DRAWING MAY NOT BE USED, REPRODUCED IN WHOLE OR IN PART, NOR REVEALED TO OTHERS WITHOUT THE PRIOR WRITTEN CONSENT OF AXIOMATIC TECHNOLOGIES CORPORATION. BY ACCEPTANCE OF THIS DRAWING, THE BEARER AGREES TO THESE CONDITIONS.				AXIOMATIC TECHNOLOGIES CORPORATION 5915 WALLACE ST. MISSISSAUGA, ON CANADA L4Z 1Z8 905-602-9270			
MATERIAL NA		DRAWN TF	DATE 2024-12-11	TITLE RS232 to Dual CAN Converter, 2 Digital Inputs, custom firmware			
FINISH NA		CHECKED	DATE	DWG REV D1	DWG NO AX030355-MD	PART REV P1.1	
THIRD ANGLE PROJECTION		INVENTOR SIZE B	APPROVED	DATE	SCALE 1.5	PART NO FG-AX030355	SHEET 1 of 1