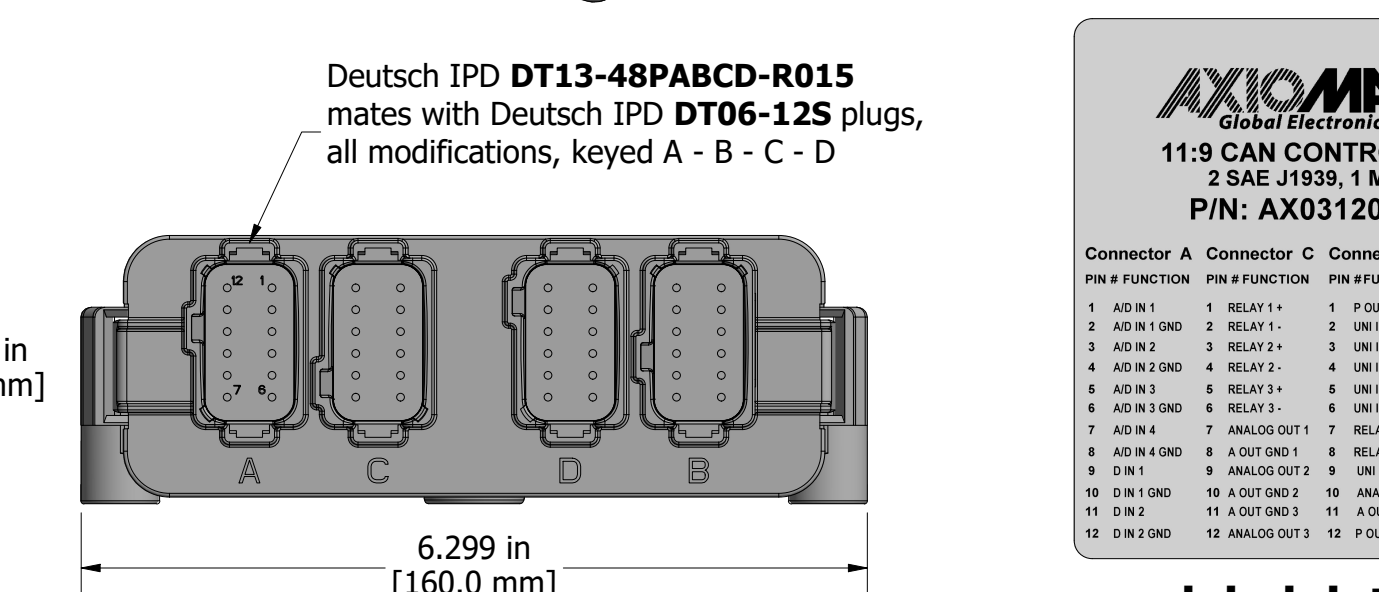
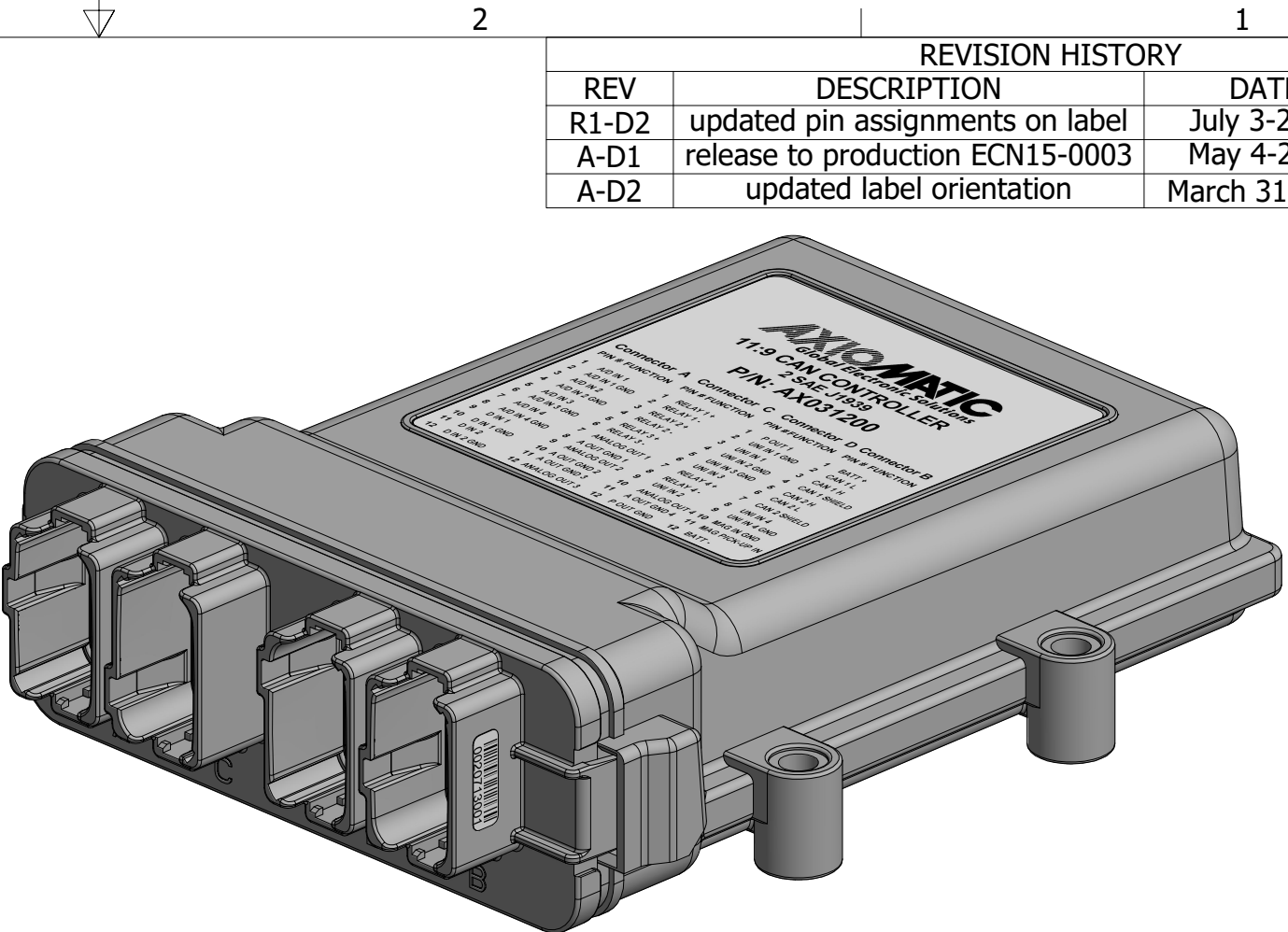


Deutsch IPD **EEC-5X650B**  
used with Deutsch IPD  
**DT13-48PABCD-R015** face plate



Deutsch IPD **DT13-48PABCD-R015**  
mates with Deutsch IPD **DT06-12S** plugs,  
all modifications, keyed A - B - C - D

REVISION HISTORY			
REV	DESCRIPTION	DATE	APPROVED
R1-D2	updated pin assignments on label	July 3-2014	LD
A-D1	release to production ECN15-0003	May 4-2015	TM
A-D2	updated label orientation	March 31-2025	GDV

AXIOMATIC Global Electronic Solutions 11:9 CAN CONTROLLER 2 SAE J1939, 1 Mbps P/N: AX031200-02			
Connector A	Connector C	Connector D	Connector B
PIN # FUNCTION	PIN # FUNCTION	PIN #FUNCTION	PIN # FUNCTION
1 A/D IN 1	1 RELAY 1+	1 P OUT 1	1 BATT +
2 A/D IN 1 GND	2 RELAY 1-	2 UNI IN 1 GND	2 CAN 1 L
3 A/D IN 2	3 RELAY 2+	3 UNI IN 1	3 CAN 1 H
4 A/D IN 2 GND	4 RELAY 2-	4 UNI IN 2 GND	4 CAN 1 SHIELD
5 A/D IN 3	5 RELAY 3+	5 UNI IN 3 GND	5 CAN 2 H
6 A/D IN 3 GND	6 RELAY 3-	6 UNI IN 3	6 CAN 2 L
7 A/D IN 4	7 ANALOG OUT 1	7 RELAY 4+	7 CAN 2 SHIELD
8 A/D IN 4 GND	8 A OUT GND 1	8 RELAY 4-	8 UNI IN 4
9 D IN 1	9 ANALOG OUT 2	9 UNI IN 2	9 UNI IN 4 GND
10 D IN 1 GND	10 A OUT GND 2	10 ANALOG OUT 4	10 MAG IN GND
11 D IN 2	11 A OUT GND 3	11 A OUT GND 4	11 MAG PICK-UP IN
12 D IN 2 GND	12 ANALOG OUT 3	12 P OUT GND	12 BATT -

### label detail

TOLERANCES		MATERIAL		DRAWN		DATE		TITLE		
fabrication		nylon 6/6 30%		TF		2013-05-17		11:9 CAN Controller		
machining		glass fill		CHECKED		DATE		DWG REV		
X.XXX +/- 0.015		housing with a		DL		DATE		DWG NO		
X.XX +/- 0.031		silicone gasket		APPROVED		DATE		SCALE		
X.X +/- 0.031				DL		DATE		full		
fractional +/- 0.031								PART NO		
								AX031200		
								PART NO		
								AX031200-MD		
								SHEET		
								1 of 1		