

4

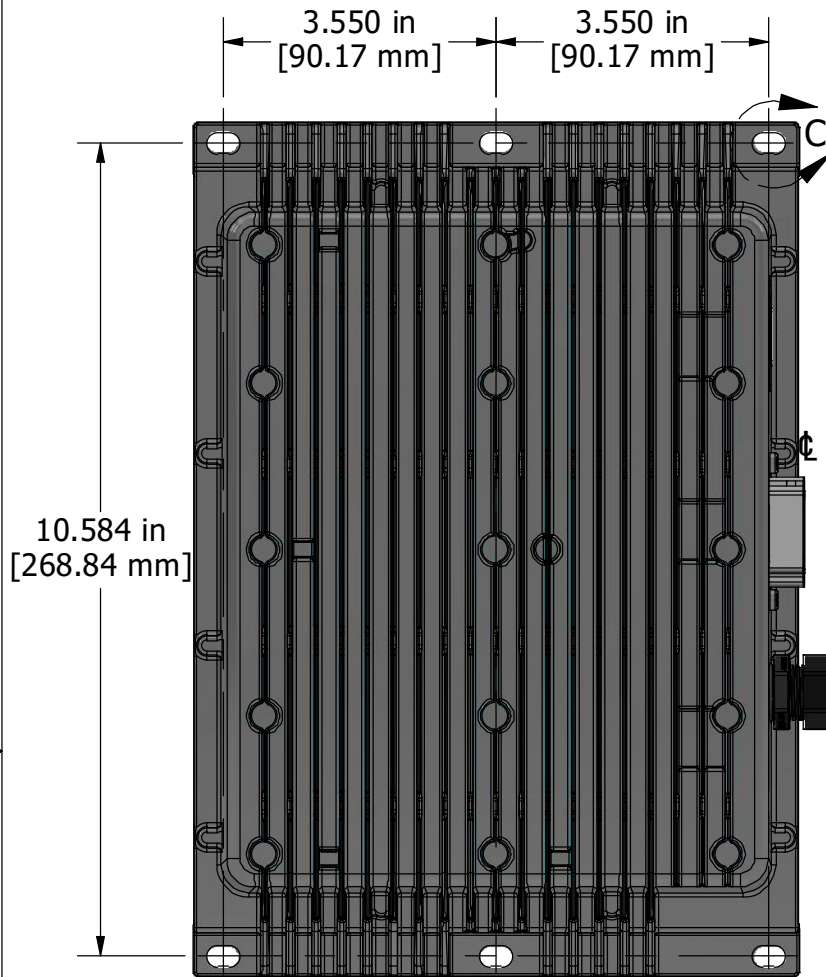
3

2

1

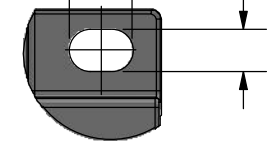
REVISION HISTORY					
REV	DESCRIPTION	DATE	DRAWN	QA	APPROVED
A-D3	RELEASE TO A (RFA24-0112)	2024-11-15	AZ	CM	GDV

B

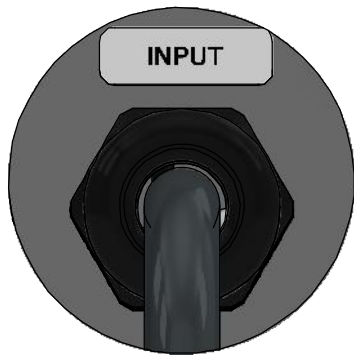
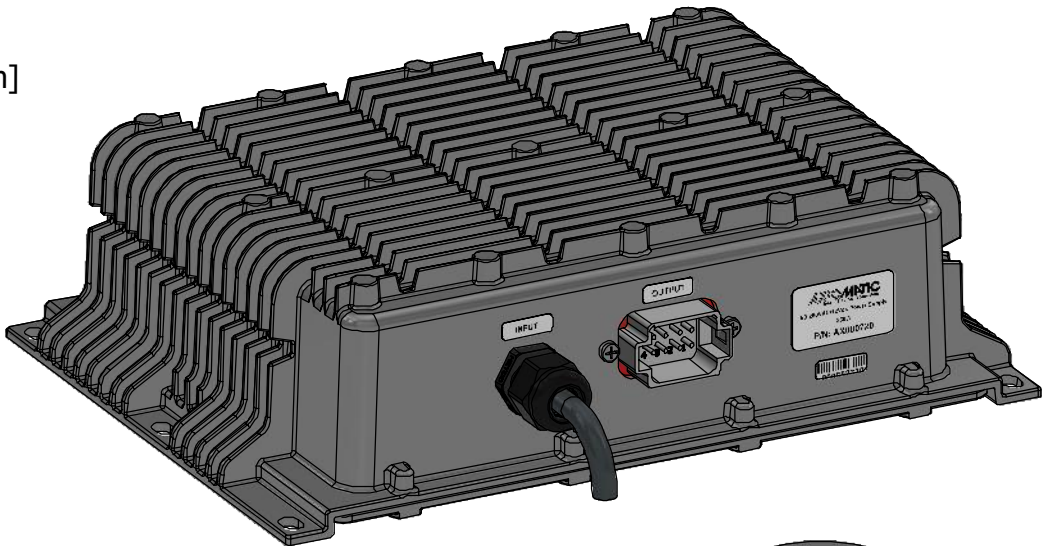


0.410 in
[10.41 mm]

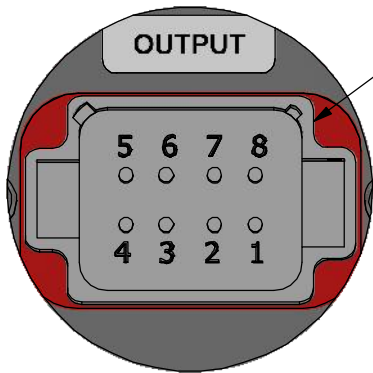
0.270 in
[6.86 mm]



DETAIL C
Mounting Slots
To Suit
M6 Or 1/4" Bolt
Use ground washers to
establish a good ground
for the enclosure



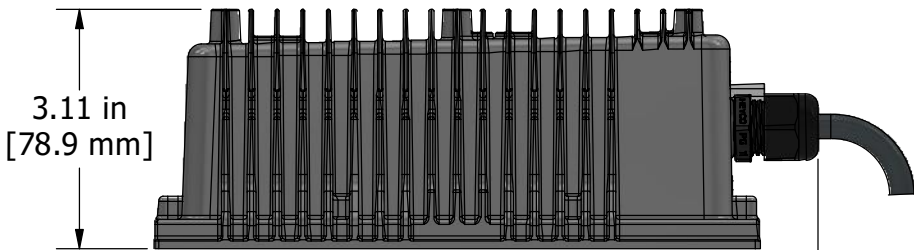
DETAIL A
SCALE 1.2AC INPUT
With Unterminated
Power Cord
3ft (0.91m)



Pin 1: OUTPUT+
Pin 2: OUTPUT+
Pin 3: OUTPUT-
Pin 4: ENABLE+
Pin 5: ENABLE-
Pin 6: OUTPUT-
Pin 7: OUTPUT-
Pin 8: OUTPUT+

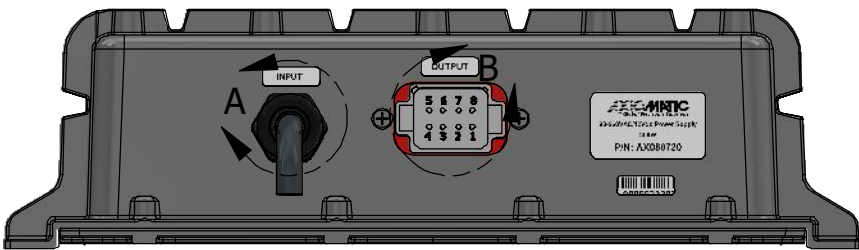
DETAIL B
Deutsch DT13-8PA
8-Pin Connector
Mates With DT06-8SA Plug

A

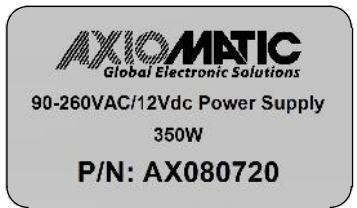


7.89 in
[200.3 mm]

0.76 in
[19.3 mm]



11.12 in
[282.4 mm]



Unit Label

DIMENSIONS ARE IN INCHES [mm]
UNLESS OTHERWISE SPECIFIED IN
DRAWING TOLERANCE ON:
X.XXX [.XX] ± 0.008 [0.20]
X.XX [X.X] ± 0.02 [0.51]
(X.XX [X.X]) ± 0.04 [1.00]
ANGLES ± 1.0°
Others follow ISO 2768-2,
tolerance class K

MATERIAL
NA
FINISH
NA
THIRD ANGLE PROJECTION
TOOL
INVENTOR
SIZE
B

DRAWN
AZ
DATE
2022-07-11
CHECKED
TF
DATE
2022-07-13
APPROVED
GDV
DATE
2022-07-13

AXIOMATIC TECHNOLOGIES CORPORATION 1445 COURTEY PARK DR E MISSISSAUGA, ON CANADA L5T 2E3 905-602-9270					
AXIOMATIC Global Electronic Solutions					
TITLE 90-260VAC/12VDC 350W POWER SUPPLY					
DWG REV D3	DWG NO AX080720-MD	PART REV A			
SCALE 0.4	PART NO AX080720	SHEET 1 of 1			

4

3

2

1