

4

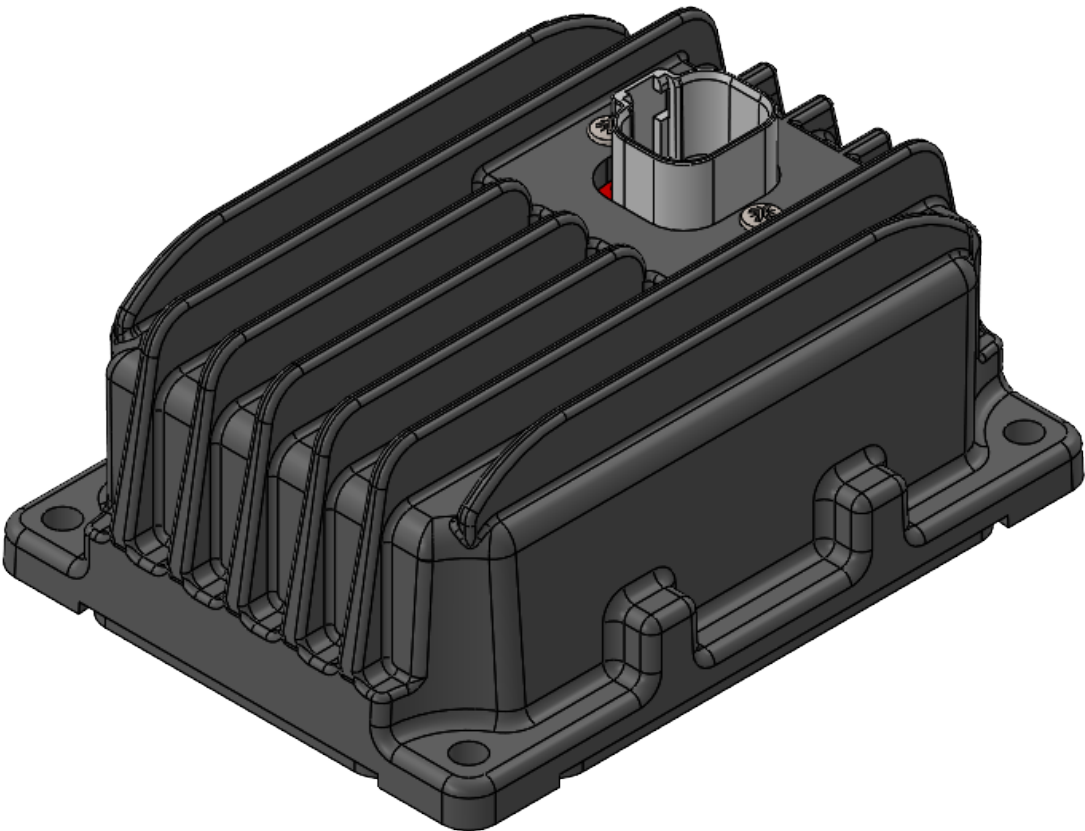
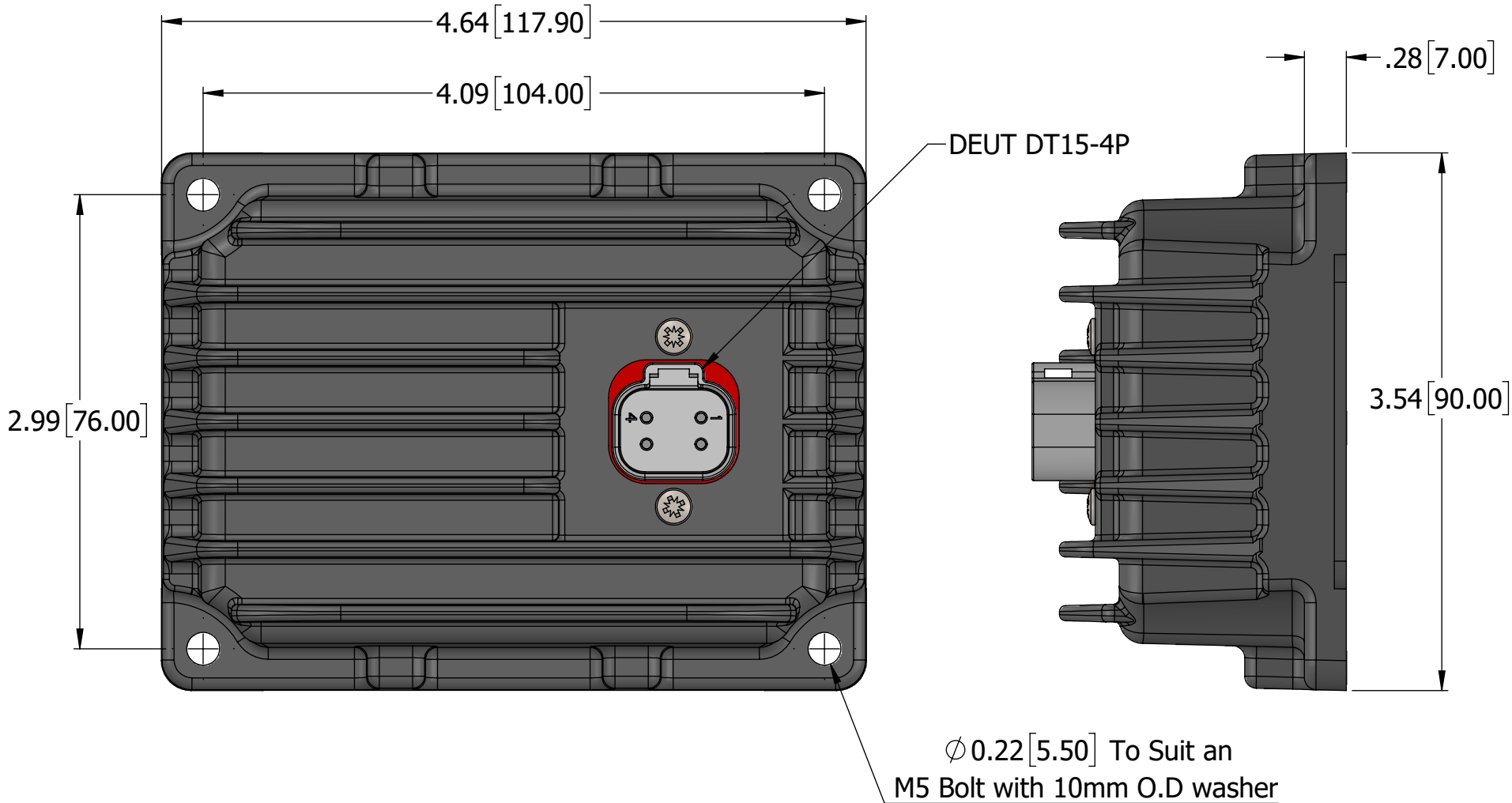
3

2

1

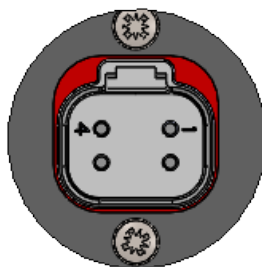
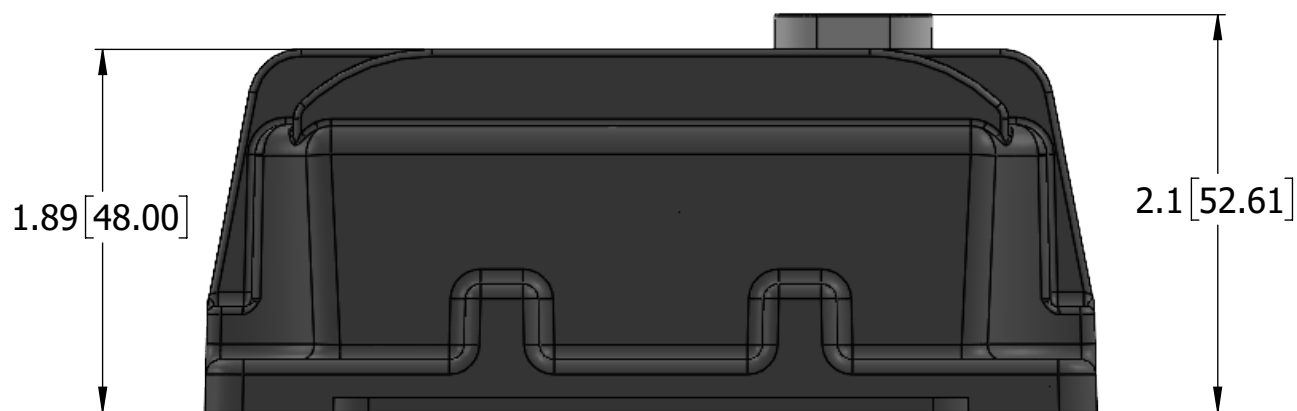
B

B



A

A



DEUTDT15-4P	
PIN#	Description
1	OUT+
2	OUT-
3	VIN -
4	VIN +

AXIOMATIC 24VDC/24VDC Converter Isolated, 50W	P/N: AX083140	
	S/N: 0020125022	

UNIT LABEL

DIMENSIONS ARE IN INCHES [mm] UNLESS OTHERWISE SPECIFIED IN DRAWING TOLERANCE ON: X.XXX [X.X] ±0.005 [0.13] X.XX [X.X] ±0.01 [0.25] X.XX [X.X] ±0.04 [1.00] ANGLES ±1.0° Others follow ISO 2768-2, tolerance class K	PROPRIETARY AND CONFIDENTIAL <small>THE INFORMATION CONTAINED IN THIS DRAWING IS CONFIDENTIAL AND PROPRIETARY AND REMAINS THE EXCLUSIVE PROPERTY OF AXIOMATIC TECHNOLOGIES CORPORATION. THIS DRAWING MAY NOT BE USED, REPRODUCED IN WHOLE OR IN PART, NOR REVEALED TO OTHERS WITHOUT THE PRIOR WRITTEN CONSENT OF AXIOMATIC TECHNOLOGIES CORPORATION. BY ACCEPTANCE OF THIS DRAWING, THE BEARER AGREES TO THE THESE CONDITIONS.</small>			AXIOMATIC <small>AXIOMATIC TECHNOLOGIES CORPORATION 1445 COURTNEY PARK DR E MISSISSAUGA, ON CANADA L5T2E3 905-602-9270</small>			
	MATERIAL ADC12	DRAWN HS	DATE 2025-11-28	TITLE: 24VDC/24VDC CONVERTOR ISOLATED, 50W			
	FINISH HARD BLACK ANODIZE	QA	DATE	DWG REV D2	DWG NO AX083140-MD		PART REV R1
	THIRD ANGLE PROJECTION 	TOOL SOLIDWORKS SIZE B	APPROVED 	DATE	SCALE 1:1	PART NO AX083140	SHEET SHEET 1 OF 1