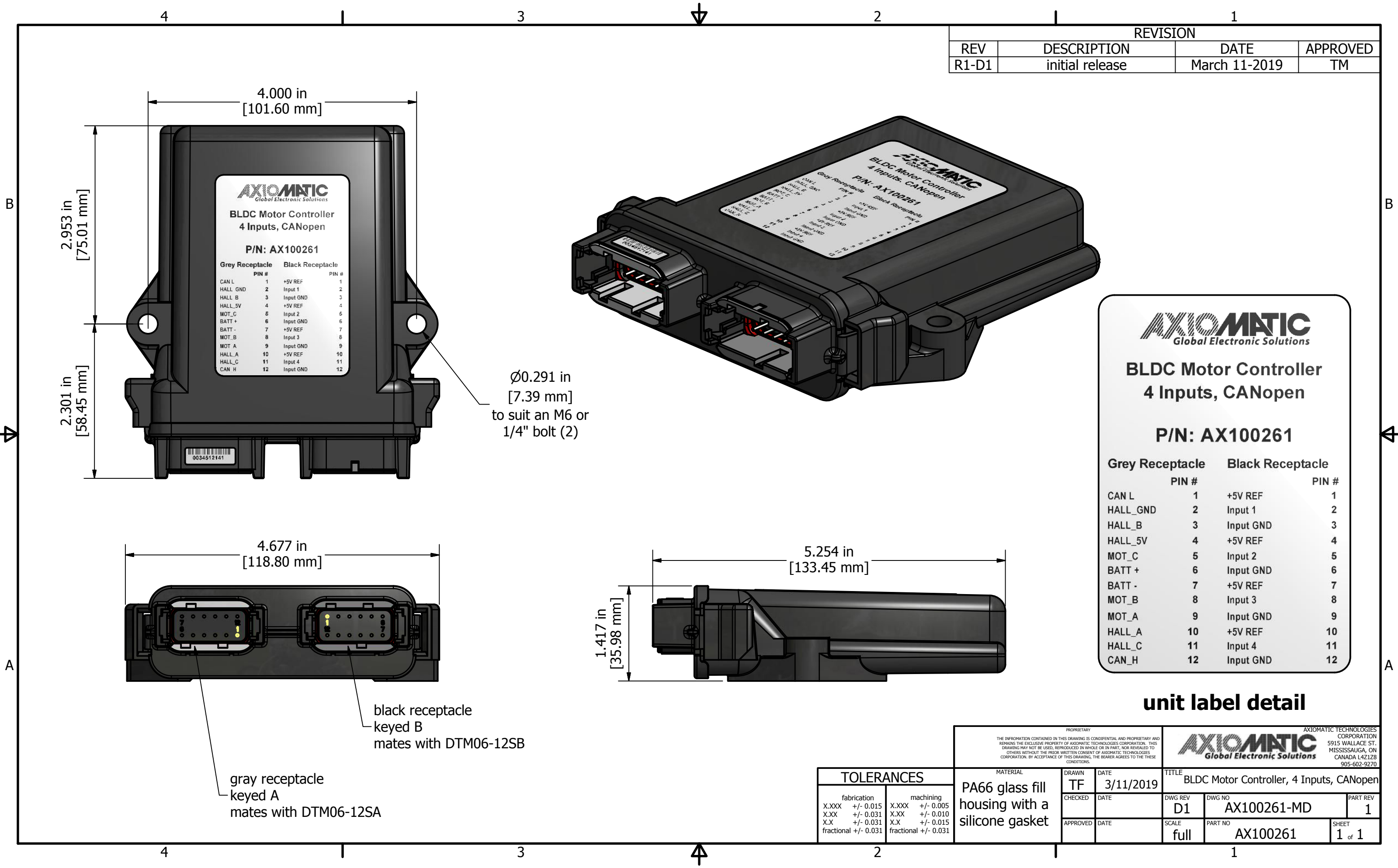


REVISION			
REV	DESCRIPTION	DATE	APPROVED
R1-D1	initial release	March 11-2019	TM



BLDC Motor Controller
4 Inputs, CANopen

P/N: AX100261

Grey Receptacle	PIN #	Black Receptacle	PIN #
CAN L	1	+5V REF	1
HALL_GND	2	Input 1	2
HALL_B	3	Input GND	3
HALL_5V	4	+5V REF	4
MOT_C	5	Input 2	5
BATT +	6	Input GND	6
BATT -	7	+5V REF	7
MOT_B	8	Input 3	8
MOT_A	9	Input GND	9
HALL_A	10	+5V REF	10
HALL_C	11	Input 4	11
CAN_H	12	Input GND	12

unit label detail

		<div>PROPRIETARY</div> <div>THE INFORMATION CONTAINED IN THIS DRAWING IS CONFIDENTIAL AND PROPRIETARY AND REMAINS THE EXCLUSIVE PROPERTY OF AXIOMATIC TECHNOLOGIES CORPORATION. THIS DRAWING MAY NOT BE USED, REPRODUCED IN WHOLE OR IN PART, NOR REVEALED TO OTHERS WITHOUT THE PRIOR WRITTEN CONSENT OF AXIOMATIC TECHNOLOGIES CORPORATION. BY ACCEPTANCE OF THIS DRAWING, THE BEARER AGREES TO THESE CONDITIONS.</div>		<div>AXIOMATIC TECHNOLOGIES CORPORATION</div> <div><div><div>AXIOMATIC</div><div>Global Electronic Solutions</div></div></div> <div>5915 WALLACE ST. MISSISSAUGA, ON CANADA L4Z1Z8 905-602-9270</div>		
TOLERANCES		MATERIAL	DRAWN	DATE	TITLE	
		PA66 glass fill housing with a silicone gasket	TF	3/11/2019	BLDC Motor Controller, 4 Inputs, CANopen	
			CHECKED	DATE	DWG REV	DWG NO
					D1	AX100261-MD
			APPROVED	DATE	SCALE	PART NO
fabrication X.XXX +/- 0.015 X.XX +/- 0.031 X.X +/- 0.031 fractional +/- 0.031					PART REV	SHEET
machining X.XXX +/- 0.005 X.XX +/- 0.010 X.X +/- 0.015 fractional +/- 0.031					1	1 of 1