

4

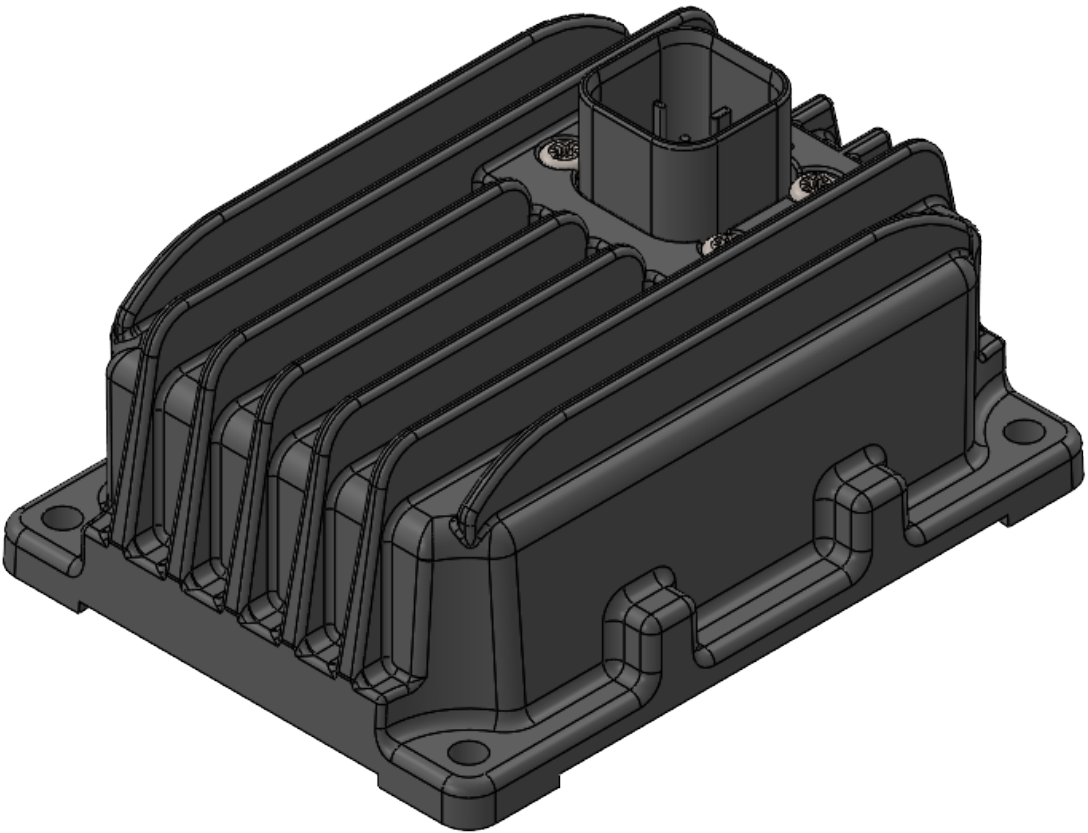
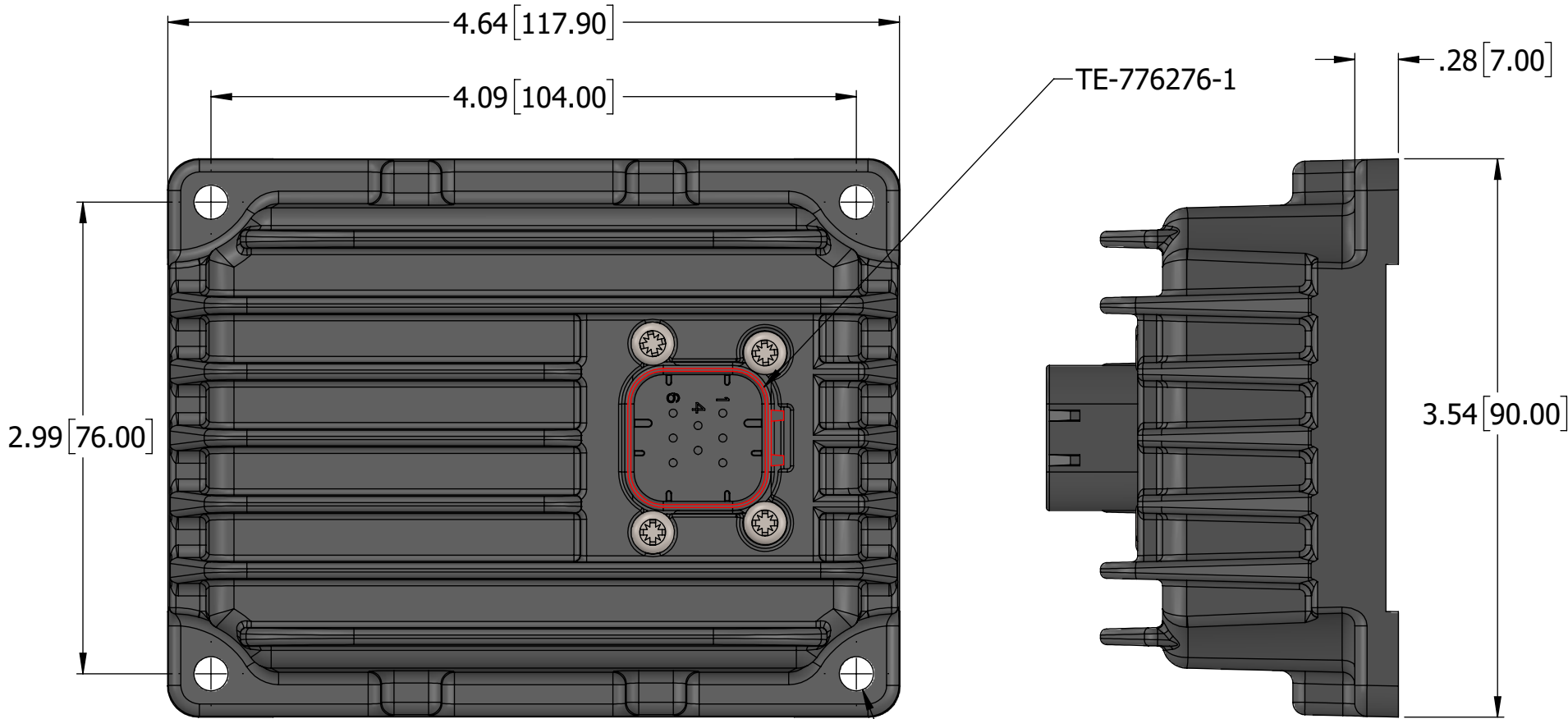
3

2

1

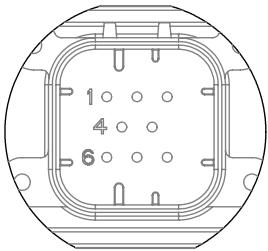
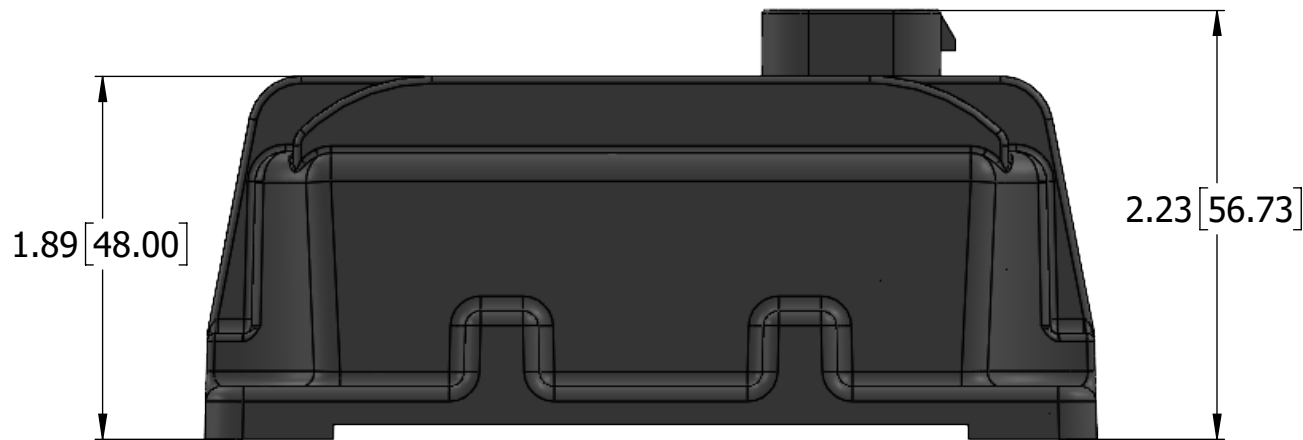
B

B



A

A

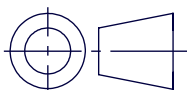


TE776276-1	
PIN#	Description
1	VPS_IN -
2	CAN_H
3	CAN_L
4	IN1
5	IN2
6	VPS_IN +
7	OUT1
8	OUT2

DIMENSIONS ARE IN INCHES [mm]

UNLESS OTHERWISE SPECIFIED
IN DRAWING TOLERANCE ON:

X.XXX [.XX] ±0.005 [0.13]
X.XX [X.X] ±0.01 [0.25]
[X.XX [X.X]] ±0.04 [1.00]
ANGLES ±1.0°
Others follow ISO 2768-2,
tolerance class K

PROPRIETARY AND CONFIDENTIAL				AXIOMATIC TECHNOLOGIES CORPORATION 1445 COURTNEY PARK DR E MISSISSAUGA, ON CANADA L5T2E3 905-602-9270			
THE INFORMATION CONTAINED IN THIS DRAWING IS CONFIDENTIAL AND PROPRIETARY AND REMAINS THE EXCLUSIVE PROPERTY OF AXIOMATIC TECHNOLOGIES CORPORATION. THIS DRAWING MAY NOT BE USED, REPRODUCED IN WHOLE OR IN PART, NOR REVEALED TO OTHERS WITHOUT THE PRIOR WRITTEN CONSENT OF AXIOMATIC TECHNOLOGIES CORPORATION. BY ACCEPTANCE OF THIS DRAWING, THE BEARER AGREES TO THESE CONDITIONS.							
MATERIAL ADC12		DRAWN HS	DATE 2025-11-11	TITLE: 2 Universal Inputs, 10A H-Bridge Controller			
FINISH HARD BLACK ANODIZE		QA	DATE	DWG REV D2	DWG NO AX100520-MD	PART REV R1	
THIRD ANGLE PROJECTION 		TOOL SOLIDWORKS	APPROVED	DATE	SCALE 1:1	PART NO AX100520	SHEET SHEET 1 OF 1
		SIZE B					

4

3

2

1