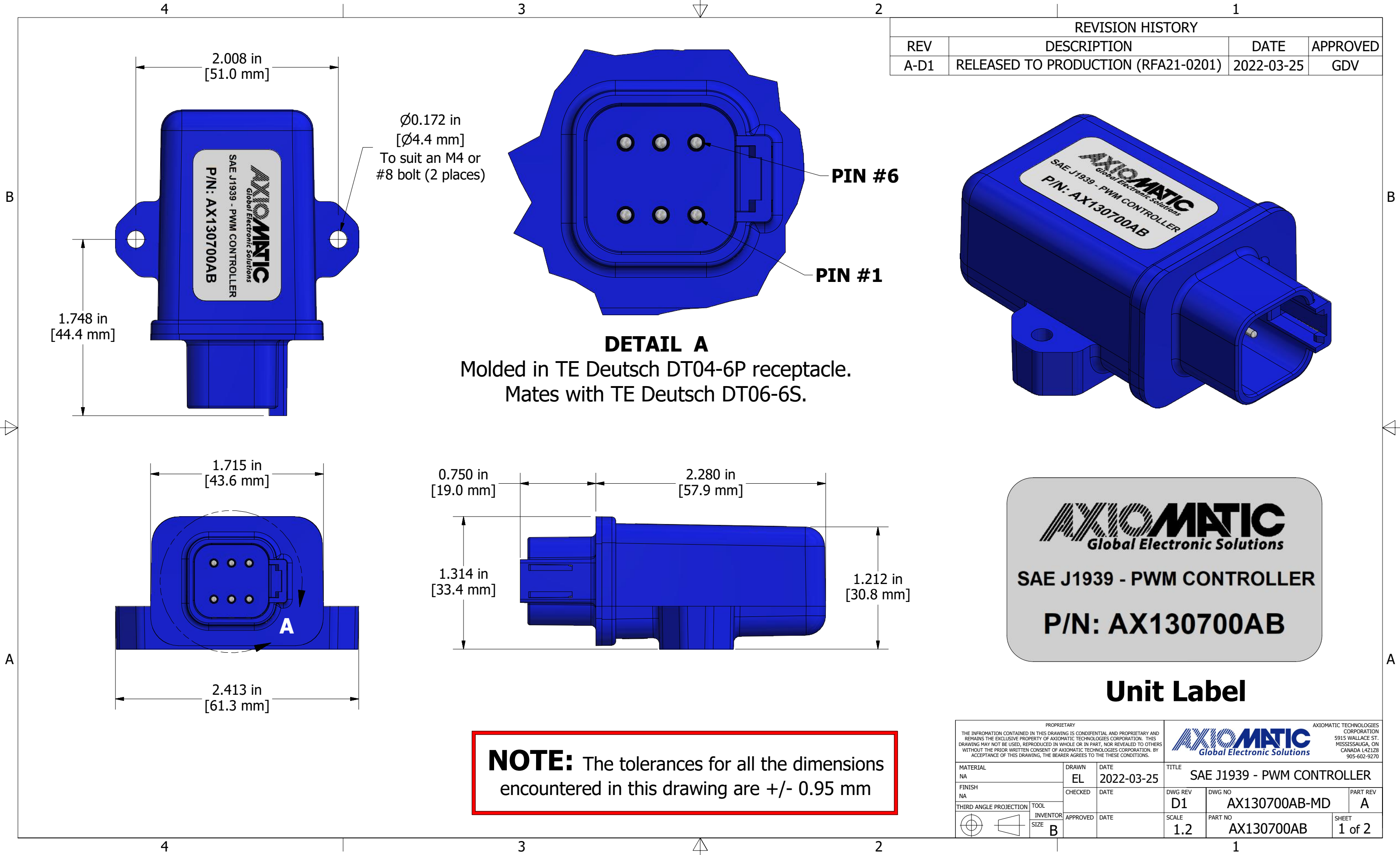


REVISION HISTORY			
REV	DESCRIPTION	DATE	APPROVED
A-D1	RELEASED TO PRODUCTION (RFA21-0201)	2022-03-25	GDV



SAE J1939 - PWM CONTROLLER  
PINOUT

CONNECTOR PIN ASSIGNMENT			
PIN	FUNCTION	PIN	FUNCTION
1	BATT+	4	CAN_L
2	PWM_OUT+	5	PWM_OUT-
3	CAN_H	6	BATT-

PROPRIETARY THE INFORMATION CONTAINED IN THIS DRAWING IS CONFIDENTIAL AND PROPRIETARY AND REMAINS THE EXCLUSIVE PROPERTY OF AXIOMATIC TECHNOLOGIES CORPORATION. THIS DRAWING MAY NOT BE USED, REPRODUCED IN WHOLE OR IN PART, NOR REVEALED TO OTHERS WITHOUT THE PRIOR WRITTEN CONSENT OF AXIOMATIC TECHNOLOGIES CORPORATION. BY ACCEPTANCE OF THIS DRAWING, THE BEARER AGREES TO THESE CONDITIONS.				AXIOMATIC Global Electronic Solutions AXIOMATIC TECHNOLOGIES CORPORATION 5915 WALLACE ST. MISSISSAUGA, ON CANADA L4Z1Z8 905-602-9270			
MATERIAL NA		DRAWN EL	DATE 2022-03-25	TITLE SAE J1939 - PWM CONTROLLER			
FINISH NA		CHECKED	DATE	DWG REV D1	DWG NO AX130700AB-MD	PART REV A	
THIRD ANGLE PROJECTION		INVENTOR SIZE B	APPROVED	DATE	SCALE 1.2	PART NO AX130700AB	SHEET 2 of 2