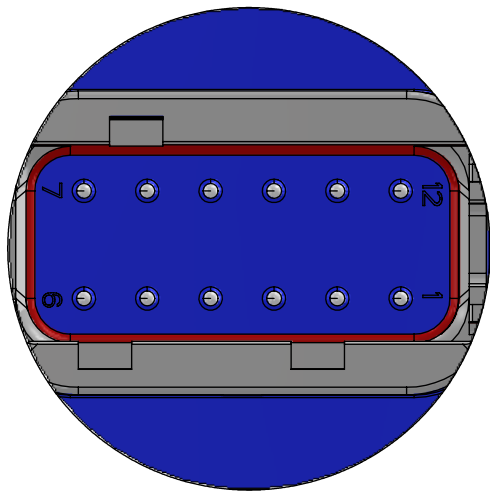
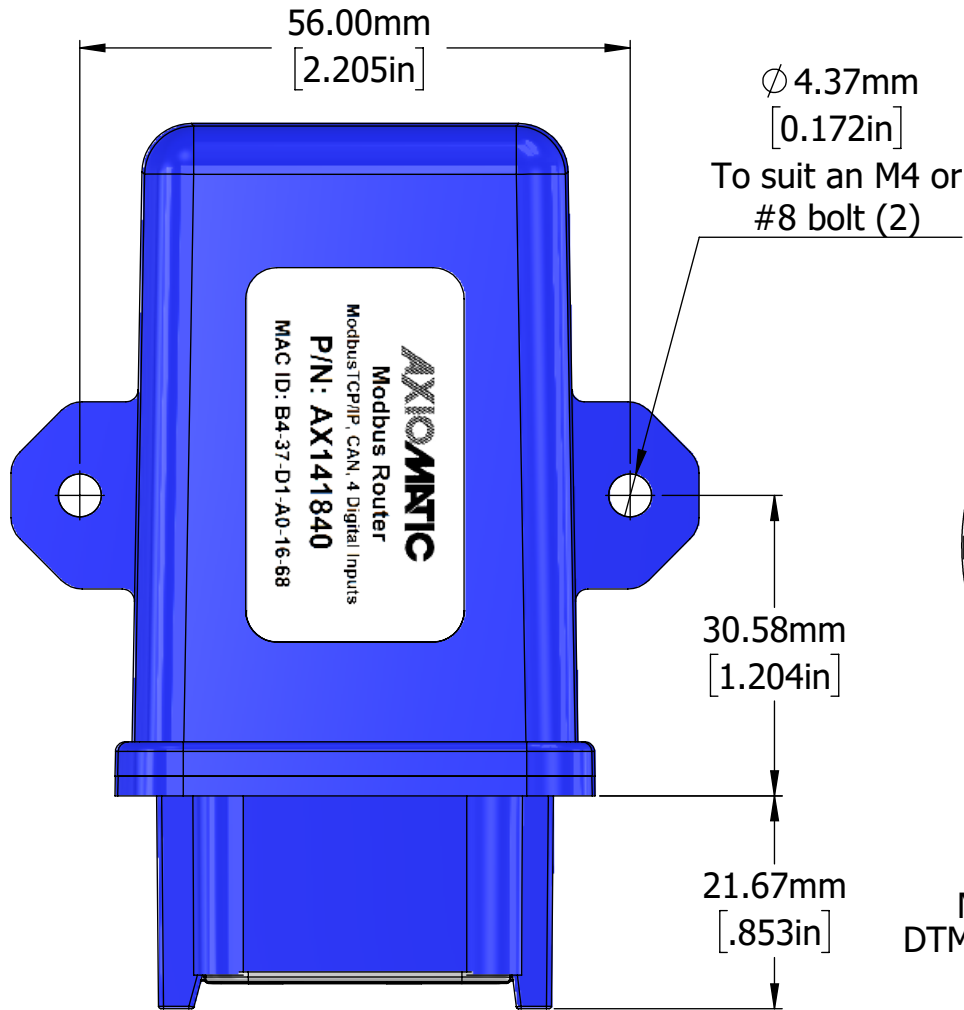
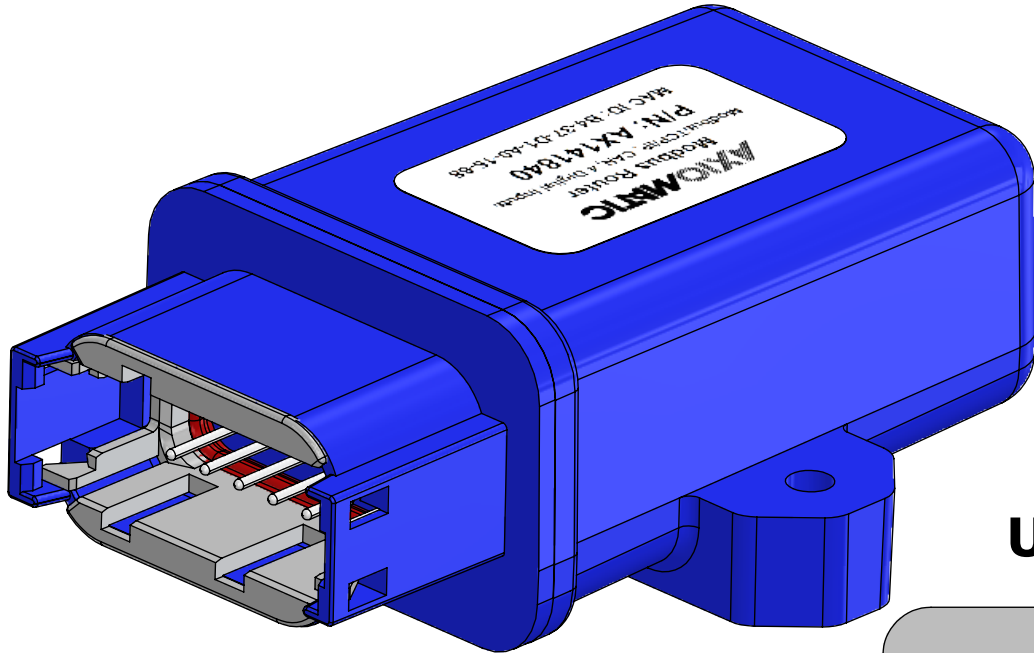


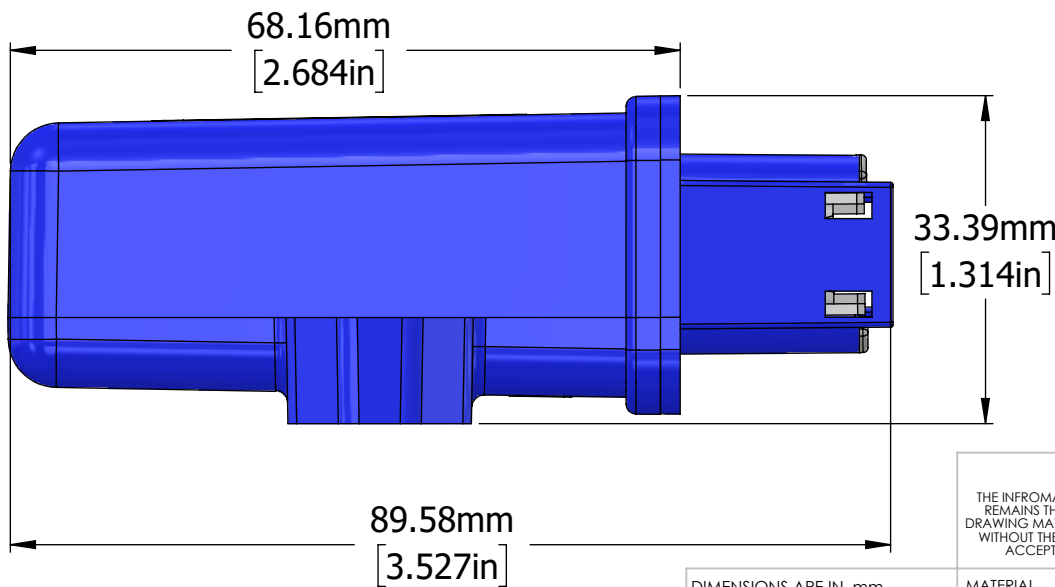
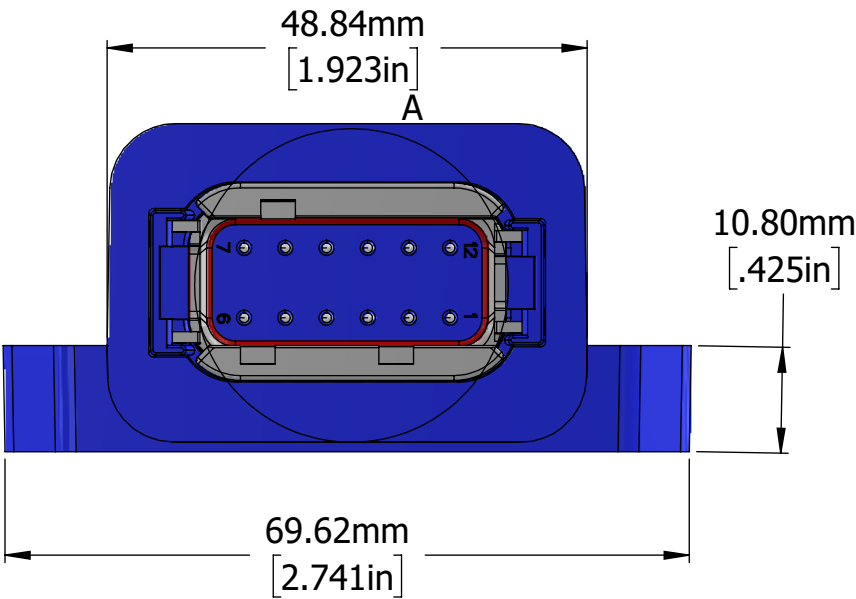
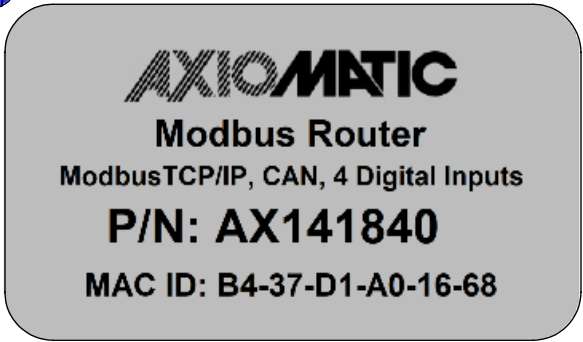
REVISIONS			
REV.	DESCRIPTION	DATE	APPROVED
P1-D1	PRODUCTION PILOT	2025-05-26	GDV



DETAIL A
Molded in TE Deutsch receptacle
DTM04-12PA, mates with DTM06-12SA.



UNIT LABEL



CONNECTOR PIN ASSIGNMENT			
PIN	FUNCTION	PIN	FUNCTION
1	BATT -	7	CAN_L
2	TX +	8	DIN 2
3	RX +	9	DIN 1
4	DIN 3	10	RX -
5	DIN 4	11	TX -
6	CAN_H	12	BATT +

PROPRIETARY AND CONFIDENTIAL
THE INFORMATION CONTAINED IN THIS DRAWING IS CONFIDENTIAL AND PROPRIETARY AND REMAINS THE EXCLUSIVE PROPERTY OF AXIOMATIC TECHNOLOGIES CORPORATION. THIS DRAWING MAY NOT BE USED, REPRODUCED IN WHOLE OR IN PART, NOR REVEALED TO OTHERS WITHOUT THE PRIOR WRITTEN CONSENT OF AXIOMATIC TECHNOLOGIES CORPORATION. BY ACCEPTANCE OF THIS DRAWING, THE BEARER AGREES TO THESE CONDITIONS.

AXIOMATIC
Global Electronic Solutions
AXIOMATIC TECHNOLOGIES CORPORATION
1445 COURTNEY PARK DR E
MISSISSAUGA, ON
CANADA L5T2E3
905-602-9270

DIMENSIONS ARE IN mm UNLESS OTHERWISE SPECIFIED IN DRAWING TOLERANCE ON: X.X ±0.5 X. ±1 ANGLES ±1.0°	MATERIAL N/A	DRAWN JA	DATE 2025-05-26	TITLE: 4 Digital Inputs Controller SAE JI939, Ethernet			
	FINISH N/A	QA CM	DATE 0	DWG REV D1	DWG NO AX141840-MD		PART REV P1
	THIRD ANGLE PROJECTION 	TOOL SOLIDWORKS	APPROVED GDV	DATE 0	SCALE 1:1	PART NO AX141840	SHEET SHEET 1 OF 1
		SIZE B					