

TECHNICAL DATASHEET #TDAX080160
DC/DC 24 V - 140 V 230 W
Axiomatic P/N: AX080160

Features:

- Powers devices at 140Vdc up to 1.65 Amps (230 W)
- On/Off control with low power standby
- Parallel, redundant capability
- Isolation
- 24Vdc nominal voltage input
- Reverse polarity protection
- Inrush current limited
- Operational from -20 to 70°C
- IP20 protection
- DIN rail mount
- Approvals (cURus, CB Marking)



Ordering Part Number:

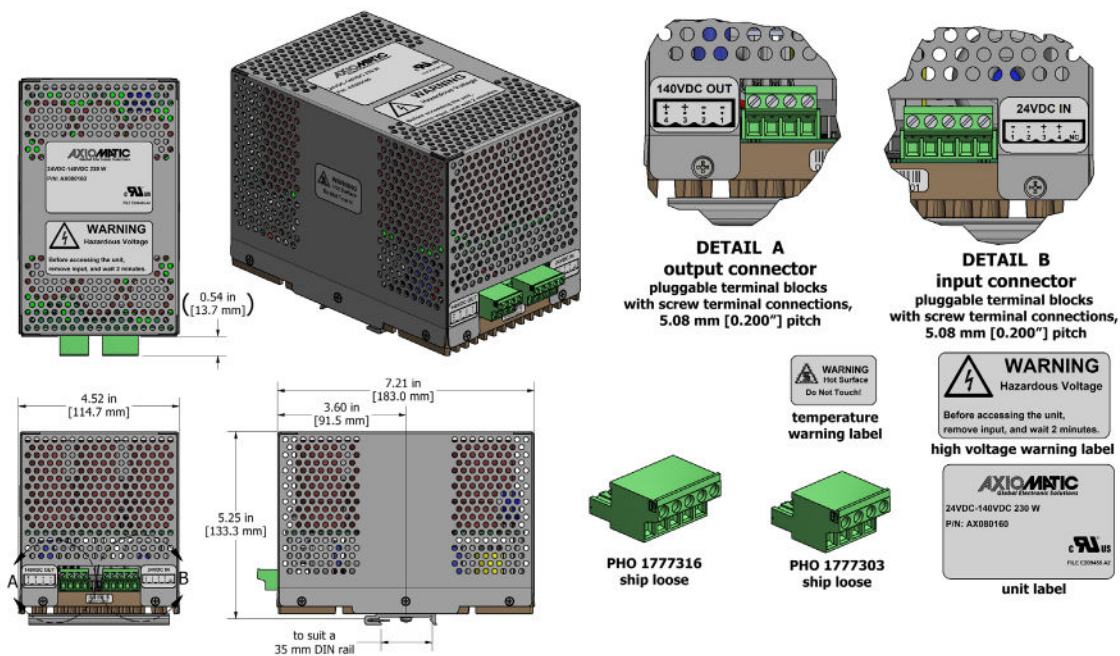
Axiomatic P/N: AX080160

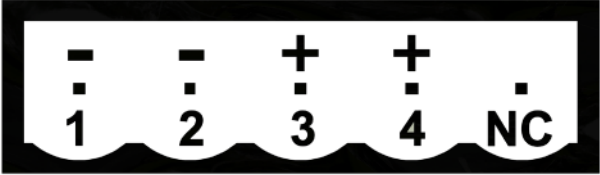
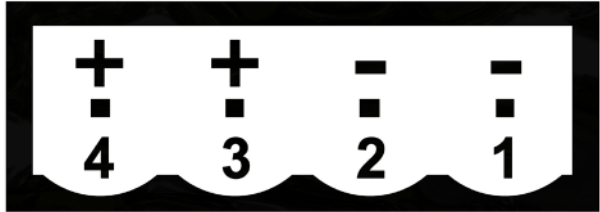
Technical Specifications:

Specifications are indicative and subject to change. Actual performance will vary depending on the application and operating conditions. Users should satisfy themselves that the product is suitable for use in the intended application. All our products carry a limited warranty against defects in material and workmanship. Please refer to our Warranty, Application Approvals/Limitations and Return Materials Process as described on <https://www.axiomatic.com/service/>.

Input Specifications		Output Specifications	
Power Source	24 Vdc nominal	Nameplate Rating (Output Power)	230 Watts nominal
Operating Voltage Range	22-32 Vdc continuous	Output Current	1.65 Amps continuous Current limited to 2.5A Transients : 10A 0.6Sec, 20A 0.06Sec, Output min. 90Vdc
Reverse Voltage and Inrush Current Protection	Provided	Output Voltage	140Vdc \pm 7% 0.A to 1.65A Setting, 140Vdc at 0.5A
Over-voltage Shutdown	33 Vdc typical	Line Regulation	\pm 1% max
Under-voltage Shutdown	16 Vdc typical	Output Voltage Ripple	1% maximum
		Turn-on Time (with full load)	3.5 Sec at 22 to 32Vdc input and 0.5 A resistive load
		Output Discharge	15Sec with 0.5A load 120Sec with 0.A load
		Over-voltage Shutdown and Latched	155V typical
		Short Circuit Current	Protection provided Hiccup Self-recovery

Dimensional Drawing



General Specifications		
Isolation	500Vdc Input, output and chassis are isolated.	<p>Electrical Connections:</p> <p><i>Refer to the dimensional drawing for location.</i></p> <p>INPUT: One 5-pin male header Wurth Elektronik Series 313 P/N: 691313510005</p>  <p>Mates with pluggable terminal blocks with screw terminal connections, 5.08 mm [0.200"] pitch (supplied with WIELAND 25.340.3553.0, WIELAND 5-PIN PLUG 5.08MM). Alternative mating plug: PHO 1777316 FRONT-MSTB 2,5/ 5-ST-5,08</p> <p>Use 12 AWG wires.</p> <p>WARNING: High Voltage Inside. Remove input power and wait two minutes before accessing power supply.</p> <p>OUTPUT: One 4-pin male header Wurth Elektronik Series 313 P/N: 691313510004</p>  <p>Mates with pluggable terminal blocks with screw terminal connections, 5.08 mm [0.200"] pitch (supplied with WIELAND 25.340.3453.0, WIELAND 4-PIN PLUG 5.08MM). Alternative mating plug: PHO 1777303 FRONT-MSTB 2,5/ 4-ST-5,08</p> <p>Use 12 AWG wires.</p>
Average Efficiency	92% typical	
Operating Temperature	-20 to 70°C (-4 to 158°F)	
Storage Temperature	-20 to 85°C (-4 to 185°F)	
Humidity	5-95% relative humidity (non-condensing)	
Protection rating	IP20	
Shock	IEC 60068-2-27:2008-02 15g	
Vibration	IEC-60068-2-6:2007-12 2g peak (Sine)	
Compliance	UL Recognition (cURus) UL 60950-1, 2nd Edition, 2011-12-19 (Information Technology Equipment - Safety - Part 1: General Requirements) CAN/CSA C22.2 No. 60950-1-07, 2nd Edition, 2011-12 (Information Technology Equipment - Safety - Part 1: General Requirements) CB marking	
Enclosure and Dimensions	DIN rail, T35 Aluminum enclosure Clear satin MIL-A-8625 anodizing 4.52 x 7.40 x 5.25 inches 114.7 x 187.9 x 133.3 mm (W x L x H including DIN rail)	
Weight	5.90 lb. (2.676 kg)	

Form: TDAX080160-06/21/23