

# **12V or 24V BATTERY CHARGER**

With SAEJ1939

## **USER MANUAL**

P/N: AX090550

P/N: AX090560

## ACCRONYMS

|       |   |
|-------|---|
| ACK   | Positive Acknowledgement (from SAE J1939 standard)  |
| CAN   | Controller Area Network   |
| DM    | Diagnostic Message (from SAE J1939 standard)  |
| DTC   | Diagnostic Trouble Code   |
| EA    | Axiomatic Electronic Assistant (A Service Tool for Axiomatic ECUs)  |
| ECU   | Electronic Control Unit (from SAE J1939 standard)   |
| FMI   | Failure Mode Identifier   |
| NAK   | Negative Acknowledgement (from SAE J1939 standard)  |
| PDU1  | A format for messages that are to be sent to a destination address, either specific or global (from SAE J1939 standard)                 |
| PDU2  | A format used to send information that has been labeled using the Group Extension technique and does not contain a destination address. |
| PGN   | Parameter Group Number (from SAE J1939 standard)  |
| PropA | Message that uses the Proprietary A PGN for peer-to-peer communication  |
| PropB | Message that uses a Proprietary B PGN for broadcast communication   |
| PWM   | Pulse Width Modulation  |
| OC    | Occurrence Count  |
| SPN   | Suspect Parameter Number (from SAE J1939 standard)  |
| VPS   | Voltage Power Supply  |

# TABLE OF CONTENTS

|  |           |
|--|-----------|
| <b>1. INTRODUCTION .....</b>   | <b>4</b>  |
| <b>2. BATTERY CHARGER OPERATION .....</b>                                  | <b>5</b>  |
| 2.1. BATTERY CHARGER MODES .....   | 5         |
| 2.2. BATTERY CHARGER STATE DIAGRAM .....                                   | 7         |
| 2.3. BATTERY PROTECTION .....  | 8         |
| 2.4. CHARGING BATTERIES CONNECTED TO A LOAD.....                           | 8         |
| <b>3. POWER SUPPLY OPERATION.....</b>                                      | <b>9</b>  |
| <b>4. LED INDICATOR.....</b>   | <b>10</b> |
| <b>5. OVERVIEW OF J1939 FEATURES .....</b>                                 | <b>11</b> |
| 5.1. INTRODUCTION TO SUPPORTED MESSAGES .....                              | 11        |
| 5.2. NAME, ADDRESS AND SOFTWARE ID.....                                    | 11        |
| 5.2.1. J1939 Name.....   | 11        |
| 5.2.2. ECU Address .....   | 12        |
| 5.2.3. Software Identifier .....   | 12        |
| <b>6. FUNCTION BLOCKS .....</b>  | <b>14</b> |
| 6.1. COMMON CONTROL FUNCTION BLOCK.....                                    | 14        |
| 6.2. CHARGING PROFILE FUNCTION BLOCK .....                                 | 14        |
| 6.3. DISPLAY BOARD FUNCTION BLOCK.....                                     | 14        |
| 6.4. RELAY OUTPUT FUNCTION BLOCK.....                                      | 15        |
| 6.5. NETWORK FUNCTION BLOCK .....  | 17        |
| 6.6. DIAGNOSTIC INPUT FUNCTION BLOCKS .....                                | 18        |
| 6.7. CONSTANT DATA FUNCTION BLOCK.....                                     | 20        |
| 6.8. CAN TRANSMIT FUNCTION BLOCK.....                                      | 20        |
| 6.9. CAN RECEIVE FUNCTION BLOCK.....                                       | 21        |
| 6.10. CONTROL STATES.....  | 22        |
| <b>7. ECU SETPOINTS ACCESSED WITH AXIOMATIC ELECTRONIC ASSISTANT .....</b> | <b>23</b> |
| 7.1. COMMON CONTROL SETPOINTS .....  | 23        |
| 7.2. CHARGING PROFILE SETPOINTS.....                                       | 24        |
| 7.3. DISPLAY BOARD SETPOINTS.....  | 25        |
| 7.4. RELAY OUTPUT SETPOINTS .....  | 26        |
| 7.5. NETWORK SETPOINTS .....   | 26        |
| 7.6. DIAGNOSTIC INPUT SETPOINTS .....                                      | 27        |
| 7.7. CONSTANT DATA .....   | 28        |
| 7.8. CAN TRANSMIT SETPOINTS.....   | 29        |
| 7.9. CAN RECEIVE SETPOINTS.....  | 30        |
| <b>8. BATTERY CHARGER ERROR CODES .....</b>                                | <b>31</b> |
| 8.1. BATTERY ERROR CODES.....  | 31        |
| 8.2. MODULE ERROR CODES .....  | 31        |
| <b>9. REFLASHING OVER CAN WITH THE AXIOMATIC EA BOOTLOADER.....</b>        | <b>32</b> |
| <b>10. INSTALLATION INSTRUCTIONS.....</b>                                  | <b>37</b> |
| <b>11. TECHNICAL SPECIFICATIONS .....</b>                                  | <b>40</b> |
| 11.1. INPUT SPECIFICATIONS .....   | 40        |
| 11.2. OUTPUT SPECIFICATIONS .....  | 40        |
| 11.3. GENERAL SPECIFICATIONS .....   | 41        |
| <b>12. VERSION HISTORY.....</b>  | <b>42</b> |

## 1. INTRODUCTION

---

The battery charger is designed to autonomously charge automotive batteries. The AX090550 model can charge 12V batteries with a maximum charging current of 25A, and the AX090560 model can charge either 12 or 24V batteries with a maximum charging current of 15A.

|          |                              |
|----------|------------------------------|
| AX090550 | 12VDC Battery Charger 25A    |
| AX090560 | 12/24VDC Battery Charger 15A |

Once programmed, the charger does not require any operator's involvement in the charging process; the charger automatically recognizes the presence of the battery, charges the battery to the maximum capacity, and automatically maintains the battery charge if the charger is connected to the power line. The AX090560 model will also automatically detect whether a 12 or 24V battery is used and adjust the charging profile to the battery connected accordingly.

When the charger is disconnected from the power line it automatically, by default, switches off in one minute, protecting the batteries from discharge.

There are three main charge modes – Precharge Mode, Bulk Charge Mode, and Constant Voltage Charge Mode – which along with Float Mode for maintaining charge, and a special Equalize Mode, allow automotive batteries to be charged safely and efficiently, prolonging their life. Temperature sensing using an auxiliary temperature sensor or through the J1939 network protects batteries from overheating, shutting down the charging process if the battery temperature exceeds a certain level.

It is possible to keep a load connected to the battery. Current, drawing by the load, should however be less than the maximum battery charging current. Other conditions are also applied.

Both models are able to be operated as a power supply instead of a battery charger. While in power supply operation, there are various user-defined control sources available.

An internal red-green LED indicator on the front panel of the charger is used to monitor the internal state of the charger.

If connected to the J1939 CAN network, the charger continuously transmits its internal state, charging current and the battery voltage. It can also use the J1939 network to acquire the battery temperature and to perform any user specific functions on demand. The battery charger also supports J1939 regular node functions, including address claiming, PGN responses, etc.

The RS232 interface of the charger allows the user to change the battery type, program battery charger setpoints, flash the new software, and watch an internal state of the charger using one of the standard terminal emulation software (Tera Term, Hyperterminal, etc.).

Other useful features of the charger include universal power line input 95-250 ACV 45-65 Hz with power factor correction, output reverse polarity protection, and digital inputs/outputs for user specific functions.

## 2. BATTERY CHARGER OPERATION

To use the unit as a battery charger, confirm that the Operation Mode setpoint in Common Control is set to Battery Charger Mode.

The battery charger implements a three-stage charging algorithm with an additional charge stage for maintenance.

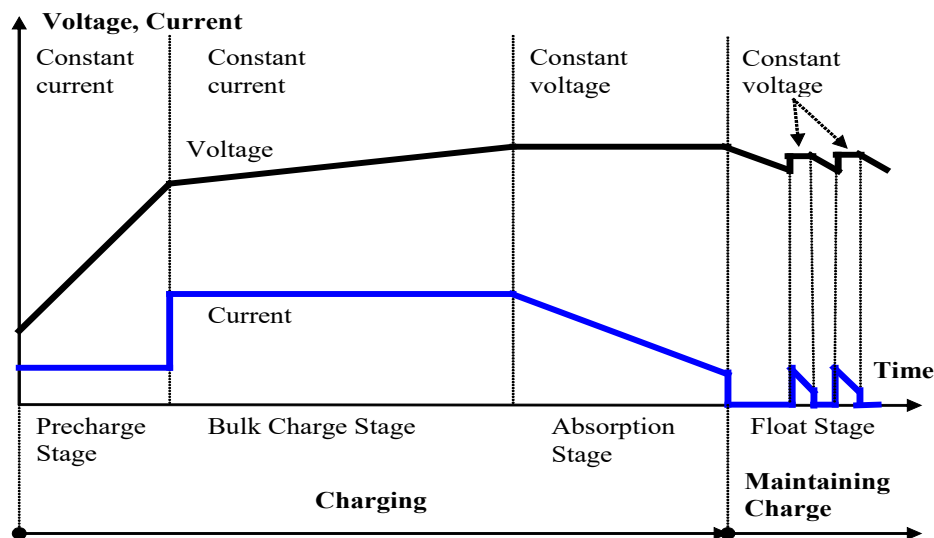


Figure 1. Battery Charger Algorithm Profile

The charging process starts from the Precharge Stage, then, when the battery voltage reaches a certain point, the charger switches to the Bulk Charge Stage, and the charging process is finalized in the Absorption (Constant Voltage Charge) Stage.

After the battery is fully charged, the charger maintains the battery charge in Float Mode.

### 2.1. Battery Charger Modes

Each stage of the charging process corresponds to one or two battery charger modes. There are also modes reflecting an idle or an error condition of the charger and a special charger supply mode used for testing.

The charger starts functioning from Idle Mode. It stays in Idle Mode until AC power is applied and a battery is connected to the charger.

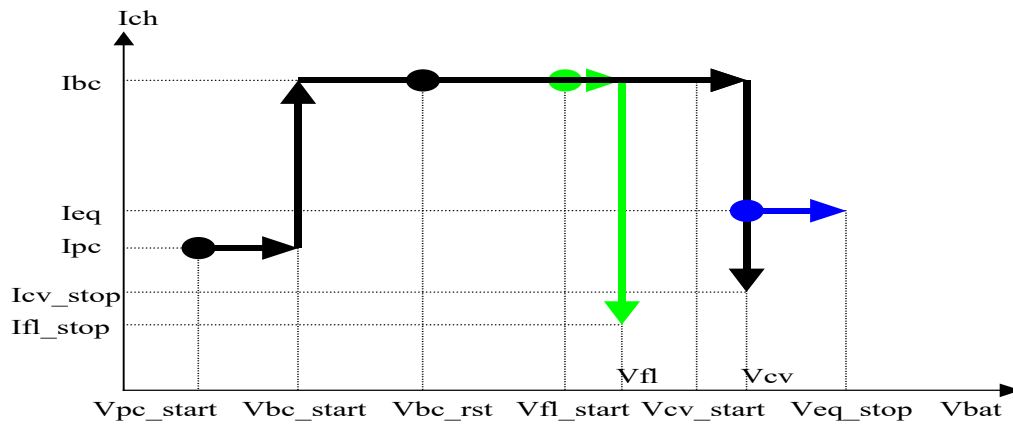


Figure 2. Voltage-Current Charging Profile

The AX090560 model will detect whether the battery connected is a 12 or 24V battery. When the charger recognizes the battery, it starts analyzing the battery state. If the battery is deeply discharged and its voltage is between  $V_{pc\_start}$  and  $V_{bc\_start}$  (Fig. 2.2), the charger will start the precharging process, charging the battery with a relatively small constant current  $I_{pc}$ . The small current prevents a deeply discharged battery from damage, which otherwise could occur due to gas emission from the battery electrolyte at high current. The charger will stay in the **Precharge Mode** until the battery voltage reaches the  $V_{bc\_start}$  voltage or the maximum Precharge time  $T_{pc\_max}$  has expired. In the latter case, the charging process will be interrupted, and the battery will go to **Battery Error Mode**.

When the battery reaches  $V_{bc\_start}$  voltage, the charger will enter the **Bulk Charge Mode** increasing the charging current to  $I_{bc}$ . It will charge the battery with the  $I_{bc}$  current until the battery voltage reaches  $V_{cv\_start}$ . At this point the battery is around 75% charged and the charger can go to the **Constant Voltage Charge Mode** limiting the charging voltage to  $V_{cv}$ . This will cause a gradual drop of the charging current. When the charging current drops to  $I_{cv\_stop}$ , the battery is considered fully charged, and the charger will stop the charging process and go to **Standby Mode**.

For flooded lead-acid batteries it is recommended that the charging process be complimented periodically with the equalization (every 3, 6, or 12 months, or when the specific gravity of the battery acid drops below a certain level, see the battery manufacturer's recommendations). In this case, immediately after the charging current drops to  $I_{cv\_stop}$ , instead of switching to Standby Mode, the charger will first go to **Equalize Mode** overcharging the battery with a constant current  $I_{eq}$  until the battery voltage reaches  $V_{eq\_stop}$  or the equalize time-out  $T_{eq\_max}$  is expired.

Equalize Mode is activated manually by setting a special setpoint. The setpoint value will be automatically reset after the charger enters Equalize Mode preventing the charger from running the equalization process more than one time.

In Standby Mode the charger only monitors the battery voltage. It will maintain the battery charge either by periodically recharging the battery when the battery voltage drops below  $V_{bc\_restart}$ , or by maintaining the charge in **Float Mode**, if the voltage drops below  $V_{fl\_start}$  voltage and Float Mode is enabled.

In Float Mode the charger limits the charging voltage to  $V_{fl}$  and the charging current  $I_{bc}$ . When the charging current drops below  $I_{fl\_stop}$ , the charger returns to Standby Mode, keeping the battery voltage at a predefined level.

The charger will switch to Battery Error Mode in case the charging process fails or when the battery temperature exceeds a certain level. It will stay in this mode until the temperature returns to normal and then, after a minute delay, will go to Idle Mode to repeat the charging cycle. The battery charger will also switch to Idle Mode if the battery or power is disconnected.

In case of electronics failure, the charger will be locked in **Module Error Mode** until either the battery or the power is disconnected, and the charger goes to the initial Idle Mode.

## 2.2. Battery Charger State Diagram

A complete set of the charger modes and their relations to each other are shown on the Battery Charger State Diagram (Fig. 2.3).

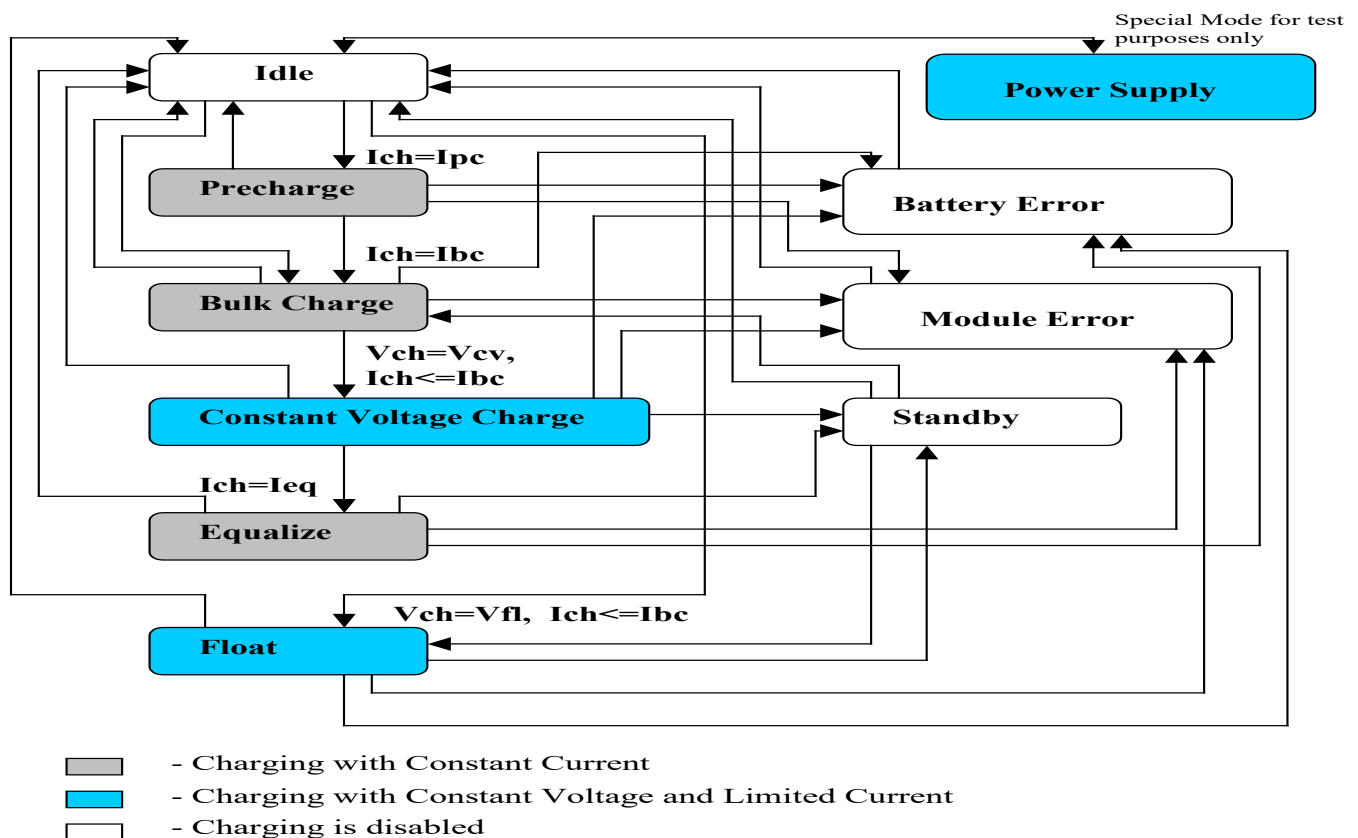


Figure 3. Battery Charger State Diagram

In order to avoid accidental switching of the charger from one mode to another due to noise, transients, etc., the condition causing the transition should stay on for at least 3 seconds.

A special, separate, password protected, Power Supply Mode is added for testing purposes only and is not intended to be used for charging batteries.

### **2.3. Battery Protection**

To prevent a battery from damage, the battery charger has the following time-out setpoints: Tch limiting the whole charging process (which includes: Precharge, Bulk Charge and Constant Voltage Charge Modes), Teq for the Equalization Mode, and Tpc – a separate time-out for Precharge Mode.

Also, for safety, the charger monitors the battery temperature by an optional NTC thermistor or through the J1939 network and stops the charging process if the battery temperature increases higher than a certain level (the thermistor resistance drops below NTCRes\_min).

### **2.4. Charging Batteries Connected to a Load**

A load can be connected to the battery if the Float Mode is enabled and the battery is fully charged, e.g. the battery is in the Standby or Float Mode. The load current, however, should not exceed the charger Ibc current.

Connecting the load during the charging process when the charger is in the Precharge, Bulk Charge, or Equalize Modes, should be normally avoided because of distortion to the charging process that the load can cause. If, however, the presence of the load is required, the user should readjust the battery setpoints the way the charging process can be finalized in the presence of the load.

Please, keep in mind that cycling power in the Standby or Float Mode will start a new charging cycle, which, to be finalized, will require the new readjusted setpoints.

If the charging process fails, the battery charger will automatically redo the charging cycle after a minute delay.



### 3. POWER SUPPLY OPERATION

To use the unit as a power supply, confirm that the Operation Mode setpoint in Common Control is set to Power Supply Mode.

While used as a Power Supply, the unit can be controlled by up to three sources: **Power Supply Control Source**, **Power Supply Enable Source**, and **Power Supply Override Source**. Each source parameter has a corresponding **Number** parameter which is used to select the appropriate Source. All available sources are listed in the table below.

| Value | Source Name              | Source Number Range | Description                     |
|-------|--------------------------|---------------------|---------------------------------|
| 0     | Control Not Used         | 0                   |                                 |
| 1     | CAN Receive              | 1 - 4               | See more details in Section 6.9 |
| 2     | Constant Discrete Data   | 1 - 4               | See more details in Section 6.7 |
| 3     | Constant Continuous Data | 1 - 4               | See more details in Section 6.7 |

Table 1 – LED Indicator Modes

When an Override Source is selected and is in control of the output, the **Power Supply Override Value** parameter controls the value that the output voltage will be.

When the Control Source is in control of the output, the **Power Supply Minimum Output Voltage** and **Power Supply Maximum Output Voltage** parameters provide the upper and lower limit for the output voltage. If the Control Source is a CAN Receive input, the voltage is calculated as a percentage of the input value out of the range from the Data Min and Max of the CAN Receive, and applied to the Minimum and Maximum Output Voltage parameters. If the Control Source is a Constant Data input, the value is used if it falls inside of the Output Voltage range. These parameters, along with the **Power Supply Overcurrent** parameter have different ranges that they may be given the unit model, as seen in the table below.

| Unit Model | Minimum Output Voltage | Maximum Output Voltage | Overcurrent Maximum Current |
|------------|------------------------|------------------------|-----------------------------|
| AX090550   | 5 V                    | 12 V                   | 25 A                        |
| AX090560   | 5 V                    | 24 V                   | 15 A                        |

Table 2 – Power Supply Limit Differences Between Models

The behaviour of the unit when an overcurrent is detected is determined by the **Power Supply Overcurrent Setting** parameter. The unit can be configured such that an overcurrent is ignored, triggers a DM1 message, or causes the unit to shut down.

## 4. LED INDICATOR

---

A red-green internal state LED indicator is mounted on the battery charger front panel. Depending on the operation mode of the unit, the LED pattern represents different internal states.

| Indicator Mode                    | Battery Charge Mode   | Power Supply Mode  |
|-----------------------------------|---|--|
| None                              | The charger is off.   | No power is being supplied; there is nothing controlling the Power Supply.                                 |
| Green Constant                    | The battery is fully charged. Charge maintenance may be performed. The charger is in Standby or Float Mode.                       | The Power Supply is being controlled by the Control Source.  |
| Green Blinking (1 s)              | The battery is charging. The charger is in the Precharge, Bulk Charge, Constant Voltage Charge, or Equalize Mode.                 | The Power Supply is being controlled by the Override Source. This supersedes the Control Source.           |
| Red Constant                      | Battery Error. The charger is in the Battery Error Mode.  | The power has been shutoff due to Overcurrent.   |
| Red Blinking (1 s)                | The charger is idling. Unable to start the charging process due to low power, absence of the battery or high battery temperature. | An overcurrent has been detected, but due to the Overcurrent setting the Power Supply keeps running.       |
| Red Blinking at high rate (0.1 s) | Module Error. The charger is in the Module Error Mode.  | N / A  |
| Red - Green Blinking (1 s)        | The charger is in the Charger Supply Mode.  | The Power Supply has been disabled by the Enable Source. This supersedes the Override and Control Sources. |

**Table 3 – LED Indicator Modes**

## 5. OVERVIEW OF J1939 FEATURES

---

The software was designed to provide flexibility to the user with respect to messages sent to and from the ECU by providing:

- Configurable ECU Instance in the NAME (to allow multiple ECUs on the same network)
- Configurable Transmit PGN and SPN Parameters

### 5.1. Introduction to Supported Messages

The ECU is compliant with the standard SAE J1939, and supports the following PGNs

#### From J1939-21 - Data Link Layer

- |  |                  |
|--|------------------|
| • Request                                    | 59904 (\$00EA00) |
| • Acknowledgment                             | 59392 (\$00E800) |
| • Transport Protocol – Connection Management | 60416 (\$00EC00) |
| • Transport Protocol – Data Transfer Message | 60160 (\$00EB00) |

Note: Any Proprietary B PGN in the range 65280 to 65535 (\$00FF00 to \$00FFFF) can be selected

#### From J1939-73 – Diagnostics

- |  |                  |
|--|------------------|
| • DM1 – Active Diagnostic Trouble Codes                        | 65226 (\$00FECA) |
| • DM2 – Previously Active Diagnostic Trouble Codes             | 65227 (\$00FECB) |
| • DM3 – Diagnostic Data Clear/Reset for Previously Active DTCs | 65228 (\$00FECC) |
| • DM11 – Diagnostic Data Clear/Reset for Active DTCs           | 65235 (\$00FED3) |

#### From J1939-81 - Network Management

- |                                |                  |
|--------------------------------|------------------|
| • Address Claimed/Cannot Claim | 60928 (\$00EE00) |
| • Commanded Address            | 65240 (\$00FED8) |

#### From J1939-71 – Vehicle Application Layer

- |                           |                  |
|---------------------------|------------------|
| • Software Identification | 65242 (\$00FEDA) |
|---------------------------|------------------|

None of the application layer PGNs are supported as part of the default configurations, but they can be selected as desired for either transmit or received function blocks.

Setpoints are accessed using standard Memory Access Protocol (MAP) with proprietary addresses. The Axiomatic Electronic Assistant (EA) allows for quick and easy configuration of the unit over the CAN network.

### 5.2. Name, Address and Software ID

#### 5.2.1. J1939 Name

The battery charger ECU has the following defaults for the J1939 NAME. The user should refer to the SAE J1939/81 standard for more information on these parameters and their ranges.

|                           |           |
|---------------------------|-----------|
| Arbitrary Address Capable | Yes       |
| Industry Group            | 0, Global |

|                         |   |
|-------------------------|---|
| Vehicle System Instance | 0   |
| Vehicle System          | 0, Non-specific system  |
| Function                | 132, Axiomatic IO Controller  |
| Function Instance       | 9, Axiomatic AX090550, Battery Charger                              |
| <b>ECU Instance</b>     | <b>0, First Instance</b>  |
| Manufacture Code        | 162, Axiomatic Technologies Corporation                             |
| Identity Number         | Variable, uniquely assigned during factory programming for each ECU |

The ECU Instance is a configurable setpoint associated with the NAME. Changing this value will allow multiple ECUs of this type to be distinguishable by other ECUs (including the Axiomatic Electronic Assistant) when they are all connected on the same network.

### 5.2.2. ECU Address

The default value of this setpoint is 128 (0x80), which is the preferred starting address for self-configurable ECUs as set by the SAE in J1939 tables B3 to B7. The EA supports the selection of any address between 0 to 253, and ***it is the user's responsibility to select an address that complies with the standard***. The user must also be aware that since the unit is arbitrary address capable, if another ECU with a higher priority NAME contends for the selected address, the battery charger will continue select the next highest address until it finds one that it can claim. See J1939/81 for more details about address claiming.

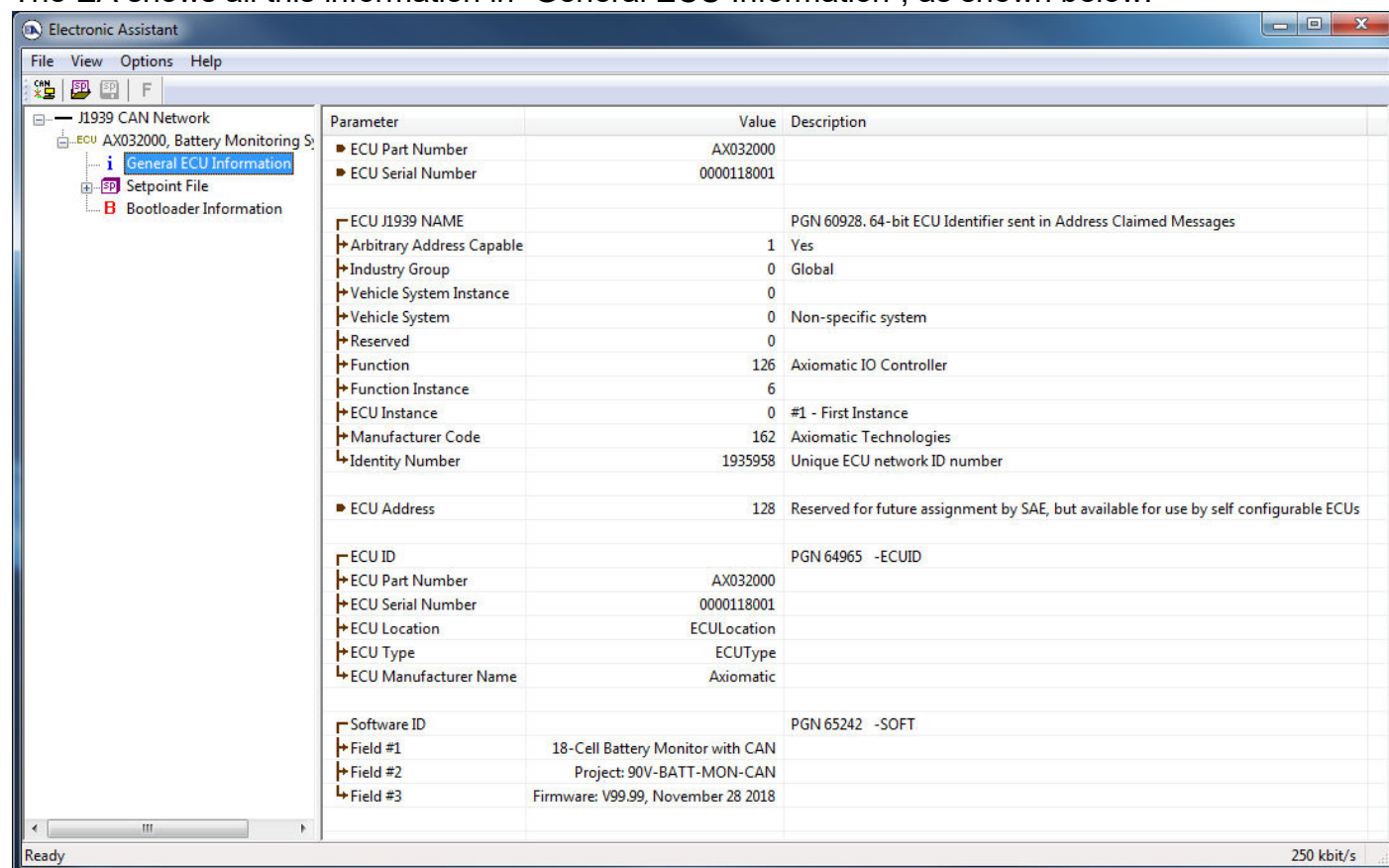
### 5.2.3. Software Identifier

|  |          |   |        |
|--|----------|---|--------|
| PGN 65242      Software Identification |          |   | - SOFT |
| Transmission Repetition Rate:          |          | On request  |        |
| Data Length:                           |          | Variable  |        |
| Extended Data Page:                    |          | 0   |        |
| Data Page:                             |          | 0   |        |
| PDU Format:                            |          | 254   |        |
| PDU Specific:                          |          | 218 PGN Supporting Information:                   |        |
| Default Priority:                      |          | 6   |        |
| Parameter Group Number:                |          | 65242 (0xFEDA)                                    |        |
| Start Position                         | Length   | Parameter Name                                    | SPN    |
| 1                                      | 1 Byte   | Number of software identification fields          | 965    |
| 2-n                                    | Variable | Software identification(s), Delimiter (ASCII “*”) | 234    |

For the battery charger ECU, Byte 1 is set to 5, and the identification fields are as follows

**(Part Number)\*(Version)\*(Date)\*(Owner)\*(Description)**

The EA shows all this information in “General ECU Information”, as shown below:



*Note: The information provided in the Software ID is available for any J1939 service tool which supports the PGN -SOFT.*

## 6. FUNCTION BLOCKS

---

### 6.1. Common Control Function Block

The Common Control function block is used to define parameters for the overall operation of the unit and for the control of the charging profile.

The first set of parameters deal with unit's operation in Power Supply Mode, please refer to Section 3 where these parameters are described in detail.

The **Output Voltage Limit**, setpoint is used to prevent the charger from entering Equalize Mode when the output voltage of the charger rises above the maximum voltage generated by the charger,  $V_{cv}$ . Limiting the output voltage to  $V_{cv}$  is necessary when there is a load connected to the battery and the load is not able to tolerate an overvoltage condition associated with Equalize Mode.

The **Activate Equalize Mode**, setpoint is used to schedule an equalization cycle for the battery. Once the equalization is done, the setpoint is automatically reset to 0 (No). This setpoint cannot be activated if the Output Voltage Limit setpoint is set. The **Power-Off Enable**, setpoint activates the battery charger shut-off in a minute, if the power line is disconnected from the charger, preventing the battery from being discharged by the battery charger electronics.

### 6.2. Charging Profile Function Block

The Charging Profile function block is used to set all parameters needed in the battery charging algorithm. These parameters characterize the conditions which the charging algorithm will use to switch between charging modes.

Please refer to Section 2, where these parameters are described in detail.

### 6.3. Display Board Function Block

The Display Board is offered as an add-on to the Battery Charger, and contains a push button digital input, and a 6-digit digital display. Depending on if there is a Display Board connected, the **Display Board Present** setting can be set to False to disable Display Board functions or set to True to enable them.

The push button digital input can be used in different ways depending on the **Push Button Setting** selected.

| Value | Push Button Setting       | Description  |
|-------|---------------------------|--|
| 0     | Control Not Used          | The push button input is not used.   |
| 1     | Used as Relay Source Only | The push button input is used only as a control source for relay outputs.                      |
| 2     | Toggle Display            | The push button input is used to toggle which output data is used with the digital display. It |

|  |  |   |
|--|--|---|
|  |  | may also be used as a control source for relay outputs. |
|--|--|---|

**Table 4 – Push Button Settings**

The digital output display will show either the Battery Voltage (in Volts), or the Charger Output Current (in Amps). One of the two can be set as the **Default Output** for the data being displayed. If the Push Button Setting is set to Toggle Display, the data displayed will switch between the Battery Voltage and the Charger Output Current when the Push Button is pressed.

| Value | Display Output         | Description  |
|-------|------------------------|--|
| 0     | Battery Voltage        | The default value displayed on the Display Board is the Battery Voltage; units are in Volts.       |
| 1     | Charger Output Current | The default value displayed on the Display Board is the Charger Output Current; units are in Amps. |

**Table 5 – Default Display Outputs**

#### 6.4. Relay Output Function Block

The Battery Charger has 4 configurable Relay Outputs, with each relay having 2 states: Normally Open, and Normally Closed. To reach these states, each relay has 3 pins: Normally Open (NO), Normally Closed (NC), and Common (COM). The following **Output Types** determine the configuration of the relay pins.

| Value | Output Type            |
|-------|------------------------|
| 0     | Output Not Implemented |
| 1     | Normal Logic           |
| 2     | Inverse Logic          |
| 3     | Toggle Logic           |
| 4     | Latched Logic          |
| 5     | Inverse Latched Logic  |

**Table 6 – Relay Output Types**

When the relay output is not implemented, the COM pin connects to NO, and will not change no matter the behavior of the source. A Normal Logic response connects COM to NC when the source is on, and COM to NO when the source is off. An Inverse Logic response connects COM to NO when the source is on, and COM to NC when the source is off.

For a Toggle Logic response, the COM pin switches between NO and NC at a rate determined by the configurable **Toggle Frequency** (in milliseconds) when the source is on, and COM remains connected to NO when the source is off.

For a Latched Logic response, the COM pin switches between NO and NC every time the source changes from off to on.

For an Inverse Latched response, the COM pin switches between NO and NC every time the source changes from on to off.

The logic which drives each relay output can be determined by the **Control Source**, **Unlatch Source**, **Enable Source**, and **Override Source**. These parameters can be chosen from the following list of sources.

| Value | Relay Source                    | Description  |
|-------|---------------------------------|--|
| 0     | Control Not Used                | No source selected; this relay feature will be disabled.   |
| 1     | Battery Charger State           | This source is on when the control board is connected to the battery, and off when the battery is disconnected.                          |
| 2     | Power Line State                | This source is on when the control board is connected to AC power via the charger, and off when the AC power connection is disconnected. |
| 3     | Temperature State               | This source is on when either the charger or the battery temperature is above the normal limit set by the configurable thermistor value. |
| 4     | Push Button Input               | This source is on when the push button is pressed, and off when the button is not pressed or there is no display board present.          |
| 5     | Idle Mode On                    | This source is on when the charging algorithm is in Idle Mode, and off in any other mode.  |
| 6     | Precharge Mode On               | This source is on when the charging algorithm is in Precharge Mode, and off in any other mode.   |
| 7     | Bulk Charge Mode On             | This source is on when the charging algorithm is in Bulk Charge Mode, and off in any other mode.   |
| 8     | Constant Voltage Charge Mode On | This source is on when the charging algorithm is in Constant Voltage Charge Mode, and off in any other mode.                             |
| 9     | Equalize Mode On                | This source is on when the charging algorithm is in Equalize Mode, and off in any other mode.  |
| 10    | Float Mode On                   | This source is on when the charging algorithm is in Float Mode, and off in any other mode.   |
| 11    | Standby Mode On                 | This source is on when the charging algorithm is in Standby Mode, and off in any other mode.   |
| 12    | Battery Error Mode On           | This source is on when the charging algorithm is in Battery Error Mode, and off in any other mode.                                       |
| 13    | Module Error Mode On            | This source is on when the charging algorithm is in Module Error Mode, and off in any other mode.  |
| 14    | Power Supply Mode On            | This source is on when the charging algorithm is in Power Supply Mode, and off in any other mode.  |

**Table 7 – Relay Output Control Sources**



The Enable Source determines if the relay output will be commanded by the Control Source. If there is no Enable Source selected, the Control Source is automatically enabled. Otherwise the **Enable Response** selected changes how the **Enable Source** is used.

| Value | Enable Response                 |
|-------|---------------------------------|
| 0     | Enable When ON                  |
| 1     | Enable When OFF                 |
| 2     | Disable When ON                 |
| 3     | Disable When OFF                |
| 4     | Enable When ON Else Keep State  |
| 5     | Enable When Off Else Keep State |

Table 8 – Relay Output Enable Responses

If the **Enable Response Delay** is set to On, the relay output enable response gets delayed based on the amount of time set by the **Turn ON Delay** and **Turn OFF Delay** parameters.

Any response determined by the above parameters can be overwritten based on the Override Source and the **Override Response**. The output of the overwritten response will be the **Override State** parameter.

| Value | Override Response |
|-------|-------------------|
| 0     | Override When On  |
| 1     | Override When Off |

Table 9 – Relay Output Override Responses

## 6.5. Network Function Block

The Network function block controls the way the battery charger communicates on the J1939 network. Further details on the J1939 network features are available in Section 5.

The Module Address (**ECU Address** in the EA), setpoint specifies the dynamic network address of the battery charger, which is claimed when the charger is connected to the network. This setpoint can be changed automatically in case the address is already taken by a higher priority in the ECU.

The ECU Instance (**ECU Instance Number** in the EA), setpoint should be set by the user if two or more battery chargers are present on the network.

The **Transmit Charger PGN**, setpoint specifies whether the charger PGN specified by the Charger PGN, ChPGN, setpoint should be transmitted.

If the **Transmit Charger Diagnostics**, setpoint is set and the charger fails, the DM1 messages are sent with the SPN specified by the Charger Failure SPN, ChFailureSPN, setpoint.

The **Maximum Battery Temperature** and the **Name of the Battery**, setpoints define the battery temperature parameters the charger collects from the J1939 network in addition to the direct measurements of the battery temperature sensor.

## 6.6. Diagnostic Input Function Blocks

The Diagnostic Input function blocks are used to setup the diagnostic messages for the controller.

The 5 types of diagnostics supported by the battery charger are shown in Table 3.

| Function Block           | Minimum Threshold | Maximum Threshold              |
|--------------------------|-------------------|--------------------------------|
| VPS Undervoltage Fault   | VPS Undervoltage  | N/A                            |
| VPS Overvoltage Fault    | N/A               | VPS Overvoltage                |
| Over Temperature Fault   | N/A               | Temperature Shutdown           |
| Lost Communication Fault | N/A               | Received Message Timeout (any) |

Table 10 – Fault Detection Thresholds

If and only if the **Event Generates a DTC in DM1** parameter is set to true will the other setpoints in the function block be enabled. They are all related to the data that is sent to the J1939 network as part of the DM1 message, Active Diagnostic Trouble Codes.

A Diagnostic Trouble Code (DTC) is defined by the J1939 standard as a 4-byte value which is a combination of:

|     |                          |  |
|-----|--------------------------|--|
| SPN | Suspect Parameter Number | (first 19 bits of the DTC, LSB first)            |
| FMI | Failure Mode Identifier  | (next 5 bits of the DTC)                         |
| CM  | Conversion Method        | (1 bit, always set to 0)                         |
| OC  | Occurrence Count         | (7 bits, number of times the fault has happened) |

In addition to supporting the DM1 message, the battery charger Controller also supports

|      |   |                             |
|------|---|-----------------------------|
| DM2  | Previously Active Diagnostic Trouble Codes            | <b>Sent only on request</b> |
| DM3  | Diagnostic Data Clear/Reset of Previously Active DTCs | <b>Done only on request</b> |
| DM11 | Diagnostic Data Clear/Reset for Active DTCs           | <b>Done only on request</b> |

So long as even one Diagnostic function block has **Event Generates a DTC in DM1** set to true, the battery charger Controller will send the DM1 message every one second, regardless of whether there are any active faults, as recommended by the standard. While there are no active DTCs, the battery charger will send the “No Active Faults” message. If a previously active DTC becomes inactive, a DM1 will be sent immediately to reflect this. As soon as the last active DTC goes inactive, it will send a DM1 indicating that there are no more active DTCs.

If there is more than one active DTC at any given time, the regular DM1 message will be sent using a multipacket Broadcast Announce Message (BAM). If the controller receives a request for a DM1 while this is true, it will send the multipacket message to the Requester Address using the Transport Protocol (TP).



At power up, the DM1 message will not be broadcast until after a 5 second delay. This is done to prevent any power up or initialization conditions from being flagged as an active error on the network.

The Diagnostic function block has a setpoint **Event Cleared Only by DM11**. By default, this is set to false, which means that as soon as the condition that caused an error flag to be set goes away, the DTC is automatically made Previously Active, and is no longer included in the DM1 message. However, when this setpoint is set to true, even if the flag is cleared, the DTC will not be made inactive, so it will continue to be sent on the DM1 message. Only when a DM11 has been requested will the DTC go inactive. This feature may be useful in a system where a critical fault needs to be clearly identified as having happened, even if the conditions that caused it went away.

In addition to all the active DTCs, another part of the DM1 message is the first byte, which reflects the Lamp Status. Each Diagnostic function block has the setpoint **Lamp Set by Event in DM1** which determines which lamp will be set in this byte while the DTC is active. The J1939 standard defines the lamps as '*Malfunction*', '*Red Stop*', '*Amber, Warning*' or '*Protect*'. By default, the '*Amber, Warning*' lamp is typically the one set by any active fault.

By default, every Diagnostic function block has associated with it a proprietary SPN. However, this setpoint **SPN for Event used in DTC** is fully configurable by the user should they wish it to reflect a standard SPN define in J1939-71 instead. If the SPN is change, the OC of the associate error log is automatically reset to zero.

Every Diagnostic function block also has associated with it a default FMI. The only setpoint for the user to change the FMI is **FMI for Event used in DTC**, even though some Diagnostic function blocks can have both high and low errors. In those cases, the FMI in the setpoint reflects that of the low-end condition, and the FMI used by the high fault will be determined per Table 4. If the FMI is changed, the OC of the associate error log is automatically reset to zero.

| <b>FMI for Event used in DTC – Low Fault</b>                                  | <b>Corresponding FMI used in DTC – High Fault</b>                             |
|---|---|
| FMI=1, Data Valid But Below Normal Operational Range – Most Severe Level      | FMI=0, Data Valid But Above Normal Operational Range – Most Severe Level      |
| FMI=4, Voltage Below Normal, Or Shorted To Low Source                         | FMI=3, Voltage Above Normal, Or Shorted To High Source                        |
| FMI=5, Current Below Normal Or Open Circuit                                   | FMI=6, Current Above Normal Or Grounded Circuit                               |
| FMI=17, Data Valid But Below Normal Operating Range – Least Severe Level      | FMI=15, Data Valid But Above Normal Operating Range – Least Severe Level      |
| FMI=18, Data Valid But Below Normal Operating Range – Moderately Severe Level | FMI=16, Data Valid But Above Normal Operating Range – Moderately Severe Level |
| FMI=21, Data Drifted Low  | FMI=20, Data Drifted High   |

**Table 11 – Low Fault FMI versus High Fault FMI**



If the FMI used is anything other than one of those in Table 4, then both the low and the high faults will be assigned the same FMI. This condition should be avoided, as the log will still use different OC for the two types of faults, even though they will be reported the same in the DTC. It is the user's responsibility to make sure this does not happen.

When the fault is linked to a DTC, a non-volatile log of the occurrence count (OC) is kept. As soon as the controller detects a new (previously inactive) fault, it will start decrementing the **Delay Before Sending DM1** timer for the Diagnostic function block. If the fault has remained present

during the delay time, then the controller will set the DTC to active, and it will increment the OC in the log. A DM1 will immediately be generated that includes the new DTC. The timer is provided so that intermittent faults do not overwhelm the network as the fault comes and goes, since a DM1 message would be sent every time the fault shows up or goes away.

## 6.7. Constant Data Function Block

The Constant data function block is used to define constant data that can be used as control sources for the unit when in Power Supply Mode.

There are Discrete and Continuous setpoints,

## 6.8. CAN Transmit Function Block

The CAN Transmit function block is used to send data from the battery charger to the J1939 network.

Normally, to disable a transmit message, the **Transmit Repetition Rate** is set to zero. However, should the message share its Parameter Group Number (PGN) with another message, this is not necessarily true. In the case where multiple messages share the same **Transmit PGN**, the repetition rate selected in the message with the LOWEST number will be used for ALL the messages that use that PGN.

By default, all messages are sent on Proprietary B PGNs as broadcast messages. If all the data is not necessary, disable the entire message by setting the lowest channel using that PGN to zero. If some of the data is not necessary, simply change the PGN of the superfluous channel(s) to an unused value in the Proprietary B range.

Since the defaults are PropB messages, the **Transmit Message Priority** is always initialized to 6 (low priority) and the **Destination Address (for PDU1)** setpoint is not used. This setpoint is only valid when a PDU1 PGN has been select, and it can be set either to the Global Address (0xFF) for broadcasts or sent to a specific address as setup by the user.

Enabling the **Override Source Address**, allows the **Source Address** of the J1939 Identifier to be changed to any value between 0...255.

The **Transmit Data Size**, **Transmit Data Index in Array (LSB)**, **Transmit Bit Index in Byte (LSB)**, **Transmit Resolution** and **Transmit Offset** can all be used to map the data to any SPN supported message by the J1939 standard from any **Data Source** of the Transmit function block. Table 5 exhibits the possible **Data Sources** for use in CAN Transmits.

| Value | Control Source        |
|-------|-----------------------|
| 0     | No Control Source     |
| 1     | Battery Charger State |
| 2     | Power Line State      |
| 3     | Battery State         |
| 4     | Temperature State     |
| 5     | Output Voltage        |
| 6     | Output Current        |

|   |                   |
|---|-------------------|
| 7 | Feedback Voltage  |
| 8 | Feedback Current  |
| 9 | Push Button Input |

**Table 12 – CAN Transmit Data Sources**

The battery charger supports up to 10 unique CAN Transmit Messages, all of which can be programmed to send any available data to the CAN network. Each CAN Transmit Message is setup to send data from 4 configurable sources, and if each of the 4 sources is used, each source can have a size as large as 2-Bytes. Only the first 6 CAN Transmit Messages are configured by default, with the remaining 4 set to unused; the default list is shown in Table 6 below.

| CAN Transmit # | Default Transmit Data | Byte Position   | Bit Position    | PGN    |
|----------------|-----------------------|-----------------|-----------------|--------|
| 1              | Battery Charger State | 1 <sup>st</sup> | 1 <sup>st</sup> | 0xFF00 |
| 2              | Power Line State      | 1 <sup>st</sup> | 5 <sup>th</sup> | 0xFF00 |
| 3              | Output Voltage        | 2 <sup>nd</sup> | 1 <sup>st</sup> | 0xFF01 |
| 4              | Output Current        | 4 <sup>th</sup> | 1 <sup>st</sup> | 0xFF02 |

**Table 13 – Default CAN Transmit Messages**

## 6.9. CAN Receive Function Block

The CAN Receive function block is designed to take any SPN from the J1939 network and use it as a control/enable/override source for any relay outputs or CAN Transmits.

The **Receive Message Enabled** is the most important setpoint associated with this function block and it should be selected first. Changing it will result in other setpoints being enabled/disabled as appropriate. By default, all receive messages are enabled.

Once a message has been enabled, a Lost Communication fault will be flagged if that message is not received within the **Receive Message Timeout** period. This will trigger a Lost Communication event if the cell input associated with the CAN Receive message is set to User Controlled under Rx Timeout Setting. In order to avoid timeouts on a heavily saturated network, it is recommended to set the period at least three times longer than the expected update rate. To disable the timeout feature, simply set this value to zero, in which case the received message will never timeout and will never trigger a Lost Communication fault.

By default, all control messages are expected to be sent to the battery charger on Proprietary B PGNs. However, should a PDU1 message be selected, the battery charger can be setup to receive it from any ECY by setting the **Specific Address that sends the PGN** to the Global Address (0xFF). If a specific address is selected instead, then any other ECU data on the PGN will be ignored.

The **Receive Data Size**, **Receive Data Index in Array (LSB)**, **Receive Bit Index in Byte (LSB)**, **Receive Resolution** and **Receive Offset** can all be used to map any SPN supported by the J1939 standard to the output data of the Received function block.

As mentioned earlier, a CAN receive function block can be selected as the source of the control input for the output function blocks. When this is the case the **Receive Data Minimum** (Off Threshold) and **Receive Data Maximum** (On Threshold) setpoints determine the minimum and maximum values of the control signal. As the names imply, they are also used as the On/Off thresholds for digital output types. These values are in whatever units the data is AFTER the resolution and offset is applied to the CAN Receive signal.

## 6.10. Control States

The **Battery Charger State** control source will output the current mode that the charging algorithm is using.

| Value | Charger Mode          |
|-------|-----------------------|
| 0     | Idle Mode             |
| 1     | Precharge Mode        |
| 2     | Bulk Charge Mode      |
| 3     | Constant Voltage Mode |
| 4     | Equalize Mode         |
| 5     | Float Mode            |
| 6     | Standby Mode          |
| 7     | Battery Error Mode    |
| 8     | Module Error Mode     |
| 9     | Detect Battery Mode   |

Table 14 – Battery Charger States

The **Power Line State** control source will output the presence of a power source for the controller, independent of the battery.

| Value | Charger Mode |
|-------|--------------|
| 0     | Power Off    |
| 1     | Power On     |

Table 15 – Power Line States

The **Battery State** control source will output the presence of a battery, independent of the power source.

| Value | Charger Mode    |
|-------|-----------------|
| 0     | No Battery      |
| 1     | Battery Present |

Table 16 – Battery States

The **Temperature State** control source will output the state of the temperature measured by the controller.

| Value | Charger Mode             |
|-------|--------------------------|
| 0     | Temperature Above Normal |
| 1     | Temperature Normal       |

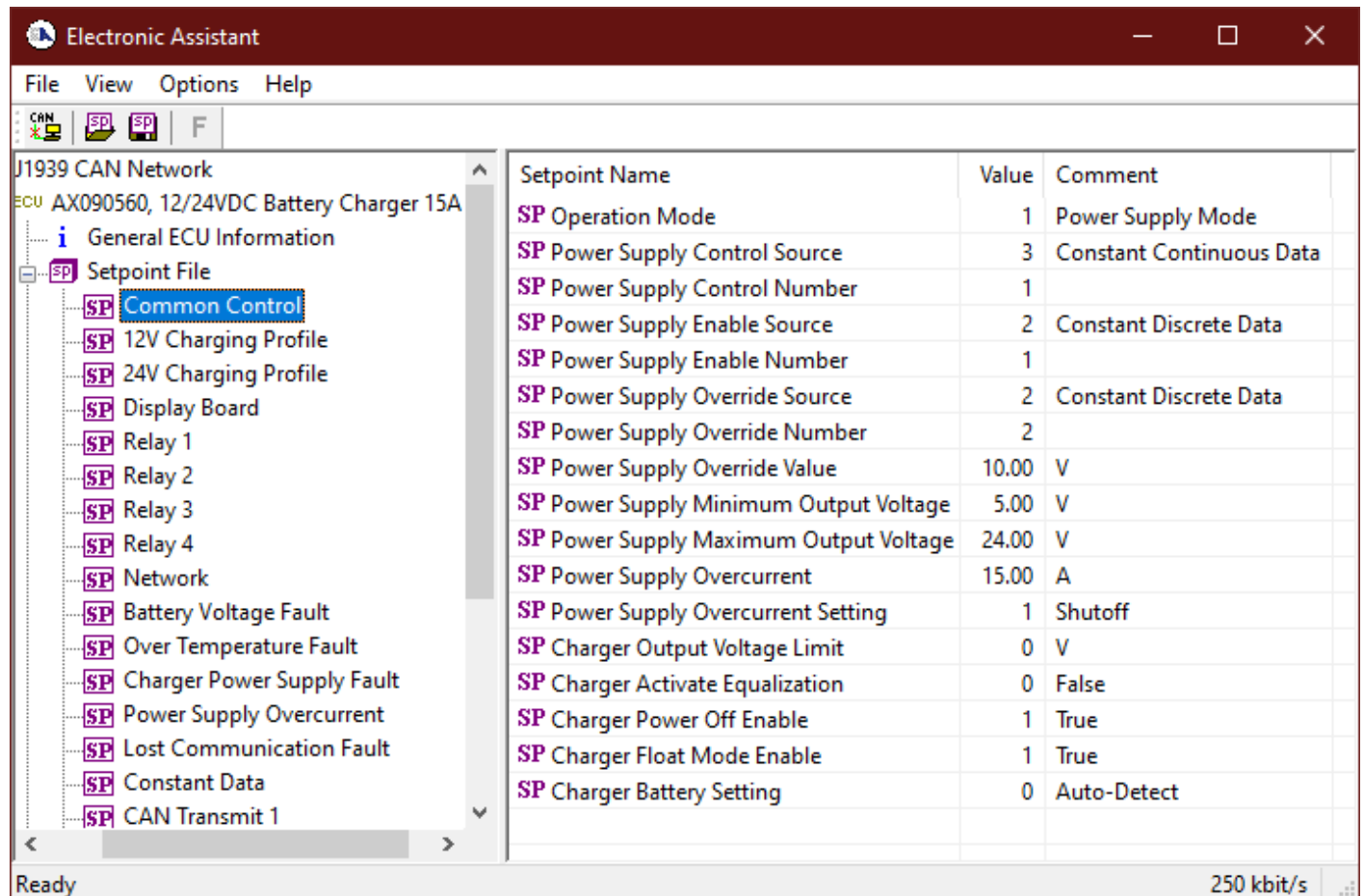
Table 17 – Temperature States

## 7. ECU SETPOINTS ACCESSED WITH AXIOMATIC ELECTRONIC ASSISTANT

Many setpoints have been referenced throughout this manual. This section describes in detail each setpoint, their defaults and ranges. For more information on how each setpoint is used, refer to the relevant section of the user manual.

### 7.1. Common Control Setpoints

The Common Control function block is defined in Section 6.1, with the setpoints pertaining to power supply operation being detailed in Section 3. Please refer there for detailed information about how all these setpoints are used.



| Setpoint Name                          | Value | Comment                  |
|--|-------|--------------------------|
| SP Operation Mode                      | 1     | Power Supply Mode        |
| SP Power Supply Control Source         | 3     | Constant Continuous Data |
| SP Power Supply Control Number         | 1     |                          |
| SP Power Supply Enable Source          | 2     | Constant Discrete Data   |
| SP Power Supply Enable Number          | 1     |                          |
| SP Power Supply Override Source        | 2     | Constant Discrete Data   |
| SP Power Supply Override Number        | 2     |                          |
| SP Power Supply Override Value         | 10.00 | V                        |
| SP Power Supply Minimum Output Voltage | 5.00  | V                        |
| SP Power Supply Maximum Output Voltage | 24.00 | V                        |
| SP Power Supply Overcurrent            | 15.00 | A                        |
| SP Power Supply Overcurrent Setting    | 1     | Shutoff                  |
| SP Charger Output Voltage Limit        | 0     | V                        |
| SP Charger Activate Equalization       | 0     | False                    |
| SP Charger Power Off Enable            | 1     | True                     |
| SP Charger Float Mode Enable           | 1     | True                     |
| SP Charger Battery Setting             | 0     | Auto-Detect              |

Screen Capture of Common Control Setpoints

| Name                                | Range             | Default Value       |
|-------------------------------------|-------------------|---------------------|
| Operation Mode                      | Drop List         | 0; Battery Charger  |
| Power Supply Control Source         | Drop List         | 0; Control Not Used |
| Power Supply Control Number         | 1 ... 4           | 1                   |
| Power Supply Enable Source          | Drop List         | 0; Control Not Used |
| Power Supply Enable Number          | 1 ... 4           | 1                   |
| Power Supply Override Source        | Drop List         | 0; Control Not Used |
| Power Supply Override Number        | 1 ... 4           | 1                   |
| Power Supply Minimum Output Voltage | 5 ... MaxVoltage  | 5V                  |
| Power Supply Maximum Output Voltage | MinVoltage ... 26 | 24V                 |

|                                  |            |            |
|----------------------------------|------------|------------|
| Power Supply Overcurrent         | 0 ... 15   | 15A        |
| Power Supply Overcurrent Setting | Drop List  | 1; Shutoff |
| Charger Output Voltage Limit     | False/True | 0; False   |
| Charger Activate Equalize Mode   | False/True | 0; False   |
| Charger Power-Off Enable         | False/True | 1; True    |

**Table 18 – Default Common Control Setpoints**

The AX090560 model includes additional setpoints; the Float Mode Enable setpoint is moved from the charging profile, and the Battery Setting setpoint is used to either lock the charging profile or let it be determined by auto-detection.

|                           |   |                |
|---------------------------|---|----------------|
| Charger Float Mode Enable | False/True  | 0; False       |
| Charger Battery Setting   | Auto-Detect,<br>Lock 12V Battery,<br>Lock 24V Battery | 0; Auto-Detect |

## 7.2. Charging Profile Setpoints

The Charging Profile function block is defined in Section 2. Please refer to that section for detailed information on how these setpoints are used. The AX090560 model has two charging profiles, for 12V and 24V batteries respectively. The Float Mode Enable setpoint is moved to the previous setpoint group for AX090560 units.

The screenshot shows the 'Electronic Assistant' software window. On the left, a tree view under 'J1939 CAN Network' and 'ECU AX090560, 12/24VDC Battery Charger 15A' shows the 'Setpoint File' expanded, with '12V Charging Profile' selected. The main pane displays a table of setpoints for this profile.

| Setpoint Name                                 | Value  | Comment |
|---|--------|---------|
| SP Maximum Charge Time                        | 48.0   | Hour    |
| SP Minimum Thermistor Resistance              | 0.4244 | KOhm    |
| SP Precharge Mode Start Voltage               | 2.50   | V       |
| SP Precharge Mode Current                     | 3.00   | A       |
| SP Precharge Mode Maximum Time                | 5.0    | Hour    |
| SP Bulk Charge Mode Start Voltage             | 12.00  | V       |
| SP Bulk Charge Mode Current                   | 10.00  | A       |
| SP Bulk Charge Mode Restart Voltage           | 13.00  | V       |
| SP Constant Voltage Charge Mode Start Voltage | 14.30  | V       |
| SP Constant Voltage Charge Mode Voltage       | 14.50  | V       |
| SP Constant Voltage Charge Mode Stop Current  | 2.00   | A       |
| SP Equalize Mode Current                      | 3.00   | A       |
| SP Equalize Mode Stop Voltage                 | 15.50  | V       |
| SP Equalize Mode Maximum Time                 | 2.0    | Hour    |
| SP Float Mode Start Voltage                   | 13.20  | V       |
| SP Float Mode Voltage                         | 13.40  | V       |
| SP Float Mode Stop Current                    | 1.00   | A       |

The status bar at the bottom indicates 'Ready' and a data rate of '250 kbit/s'.

*Screen Capture of Default Charging Profile Setpoints*

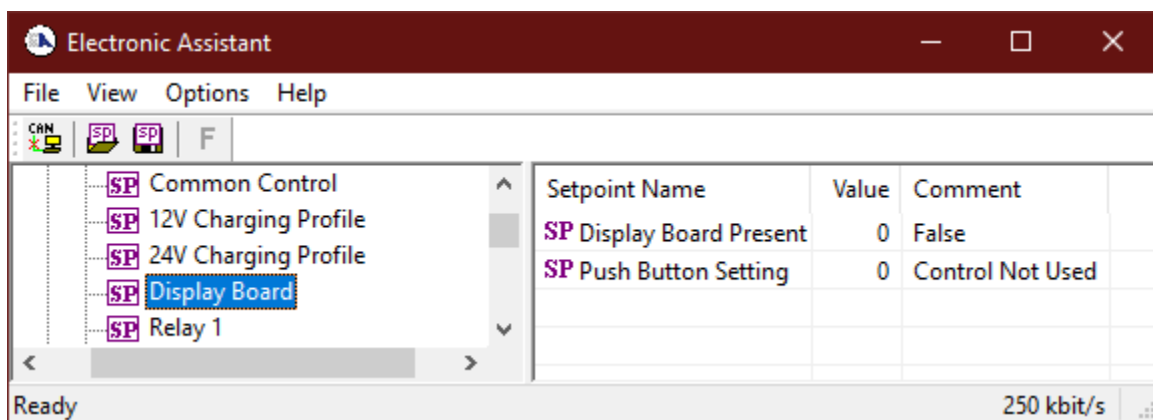


| Name                                       | Range       | 12V Profile<br>Default Value | 24V Profile<br>Default Value |
|--|-------------|------------------------------|------------------------------|
| Maximum Charge Time                        | 0.1...500   | 48                           | 48                           |
| Minimum Temp. Monitor Resistance           | 0.1...30.0  | 0.4244                       | 0.4244                       |
| Precharge Mode Start Voltage               | 2.5...30.0  | 2.5                          | 5.0                          |
| Precharge Mode Current                     | 0.5...10.0  | 3.0                          | 3.0                          |
| Precharge Mode Maximum Time                | 0.1...500.0 | 5.0                          | 5.0                          |
| Bulk Charge Mode Start Voltage             | 2.5...30.0  | 12.0                         | 20.0                         |
| Bulk Charge Mode Current                   | 0.5...10.0  | 10.0                         | 15.0                         |
| Bulk Charge Mode Restart Voltage           | 2.5...30.0  | 13.0                         | 26.0                         |
| Constant Voltage Charge Mode Start Voltage | 2.5...30.0  | 14.3                         | 27.5                         |
| Constant Voltage Charge Mode Voltage       | 2.5...30.0  | 14.5                         | 28.0                         |
| Constant Voltage Charge Mode Stop Current  | 0.5...10.0  | 2.0                          | 4.0                          |
| Equalize Mode Current                      | 0.5...10.0  | 3.0                          | 6.0                          |
| Equalize Mode Stop Voltage                 | 2.5...30.0  | 15.5                         | 30.0                         |
| Equalize Mode Maximum Time                 | 0.1...500.0 | 2.0                          | 2.0                          |
| Float Mode Enable                          | False/True  | 1; True                      | 1; True                      |
| Float Mode Start Voltage                   | 2.5...30.0  | 13.2                         | 26.4                         |
| Float Mode Voltage                         | 2.5...30.0  | 13.4                         | 26.8                         |
| Float Mode Stop Current                    | 0.5...10.0  | 1.0                          | 2.0                          |

Table 19 – Default Charging Profile Setpoints

### 7.3. Display Board Setpoints

The Display Board function block is defined in Section 6.3. Please refer there for detailed information about how all these setpoints are used.



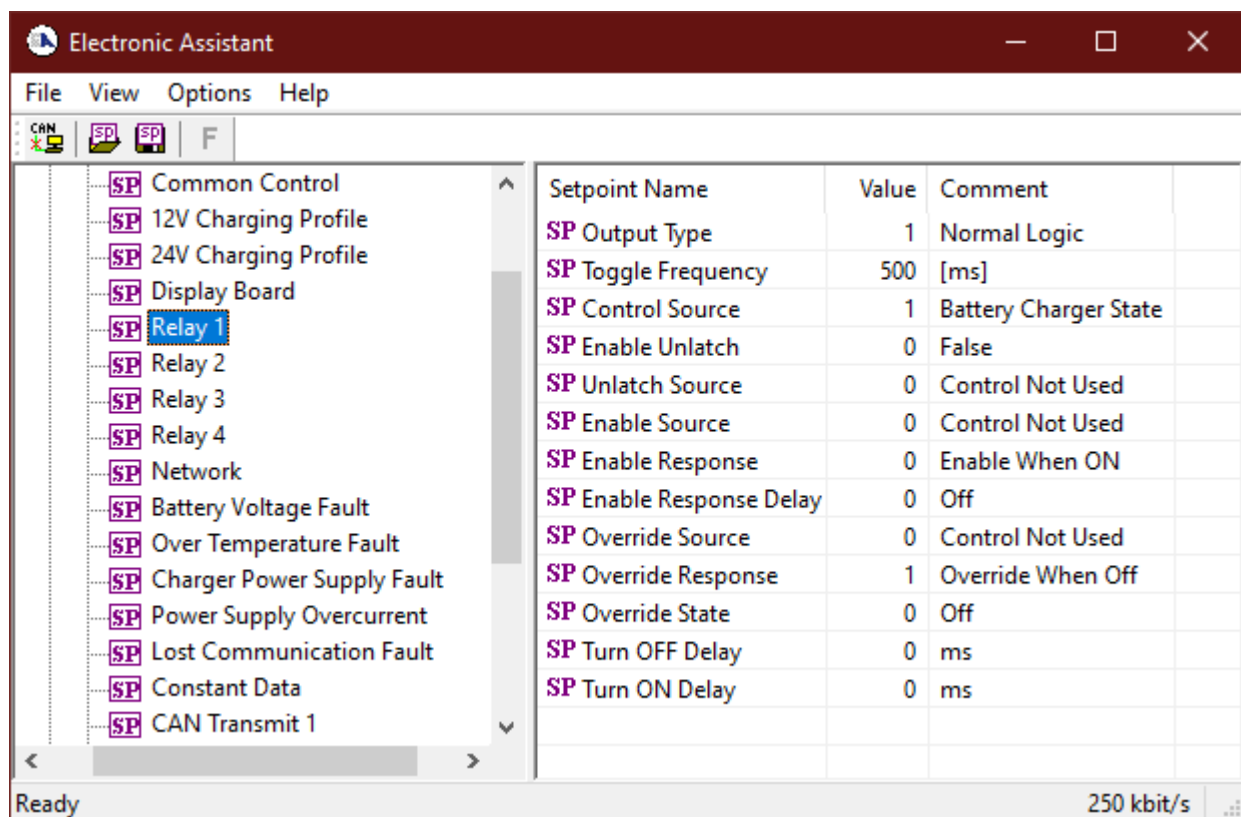
Screen Capture of Display Board Setpoints

| Name                  | Range      | Default Value       |
|-----------------------|------------|---------------------|
| Display Board Present | False/True | 0; False            |
| Push Button Setting   | Drop List  | 0; Control Not Used |

Table 20 – Default Display Board Setpoints

## 7.4. Relay Output Setpoints

The Relay Output function block is defined in Section 6.4. Please refer there for detailed information about how all these setpoints are used.



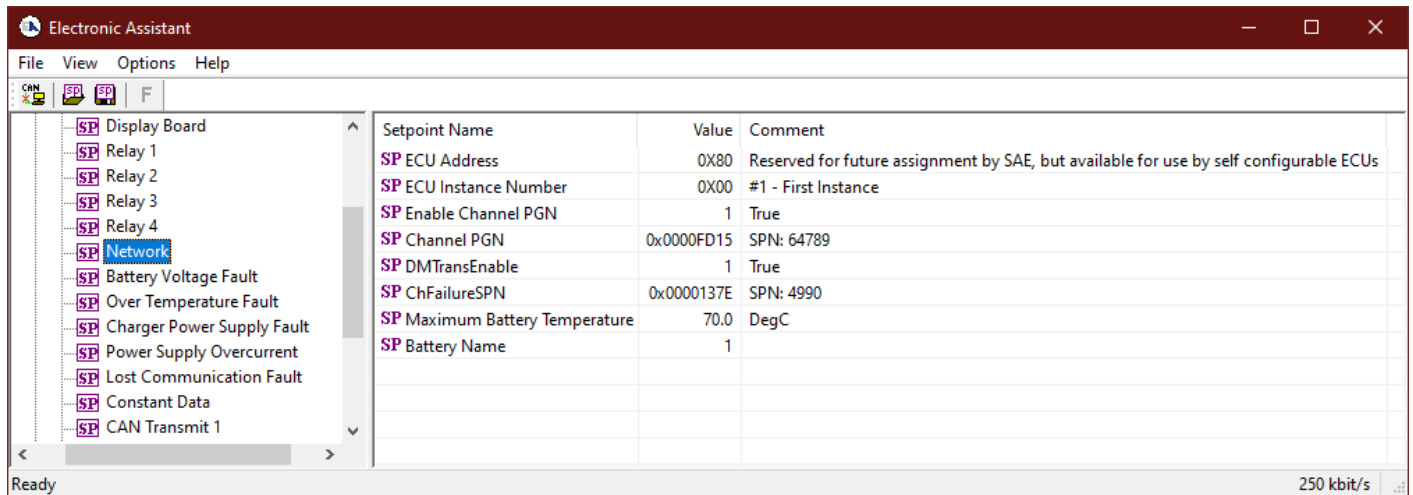
Screen Capture of Default Relay Output Setpoints

| Name                  | Range        | Default Value           |
|-----------------------|--------------|-------------------------|
| Output Type           | Drop List    | 1; Normal Logic         |
| Toggle Frequency      | 0...60000    | 500                     |
| Control Source        | Drop List    | Differs on relay number |
| Unlatch Source        | Drop List    | 0; No Source            |
| Enable Source         | Drop List    | 0; No Source            |
| Enable Response       | Drop List    | 0; Enable When On       |
| Enable Response Delay | Off/On       | 0; Off                  |
| Override Source       | Drop List    | 0; No Source            |
| Override Response     | Drop List    | 0; Override When On     |
| Override State        | Off/On       | 0; Override State Off   |
| Turn OFF Delay        | 0...86400000 | 0                       |
| Turn ON Delay         | 0...86400000 | 0                       |

Table 21 – Default Relay Output Setpoints

## 7.5. Network Setpoints

The Network function block is defined in Section 5 and Section 6.5. Please refer there for detailed information about how all these setpoints are used.



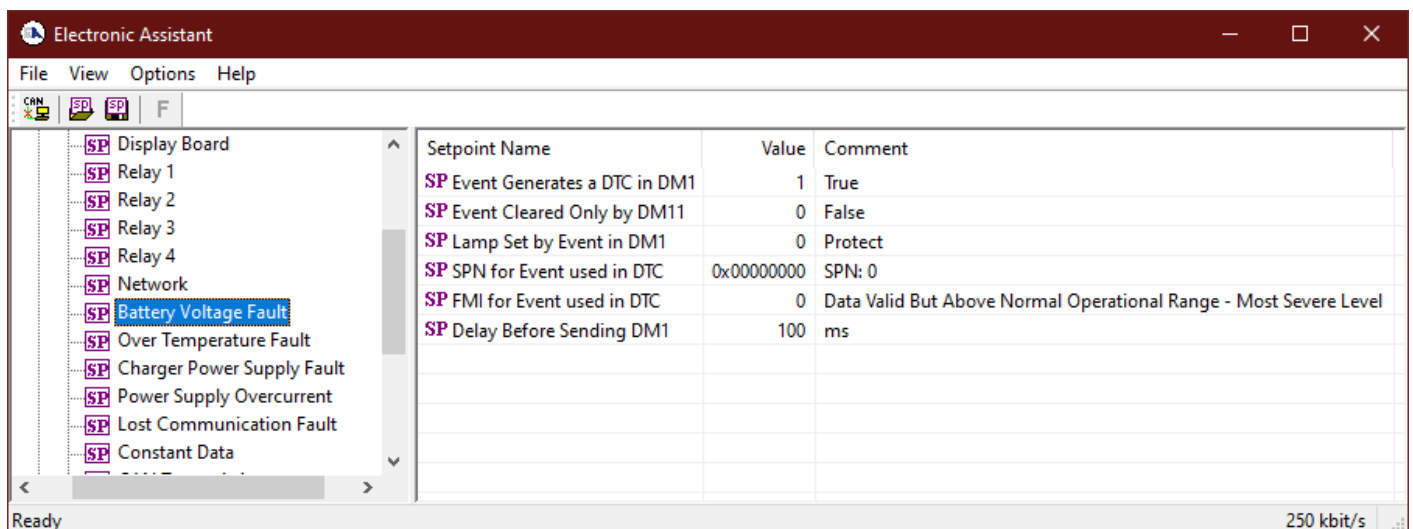
Screen Capture of Default Network Setpoints

| Name                        | Range            | Default Value               |
|-----------------------------|------------------|-----------------------------|
| ECU Address                 | 0...253          | 128                         |
| ECU Instance                | 0...6            | 0; 1 <sup>st</sup> Instance |
| Enable Channel PGN          | False/True       | 1; True                     |
| Channel PGN                 | 0x0...0x7FFFF    | 64789                       |
| DM Trans Enable             | False/True       | 1; True                     |
| Channel Failure SPN         | 0x0...0x7FFFF    | 4990                        |
| Maximum Battery Temperature | -40.0...210.0 °C | 70.0                        |
| Battery Name                | Drop List        | 0                           |

Table 22 – Default Network Setpoints

## 7.6. Diagnostic Input Setpoints

The Diagnostic Input function block is defined in Section 6.6. Please refer to that section for detailed information about how all these setpoints are used.



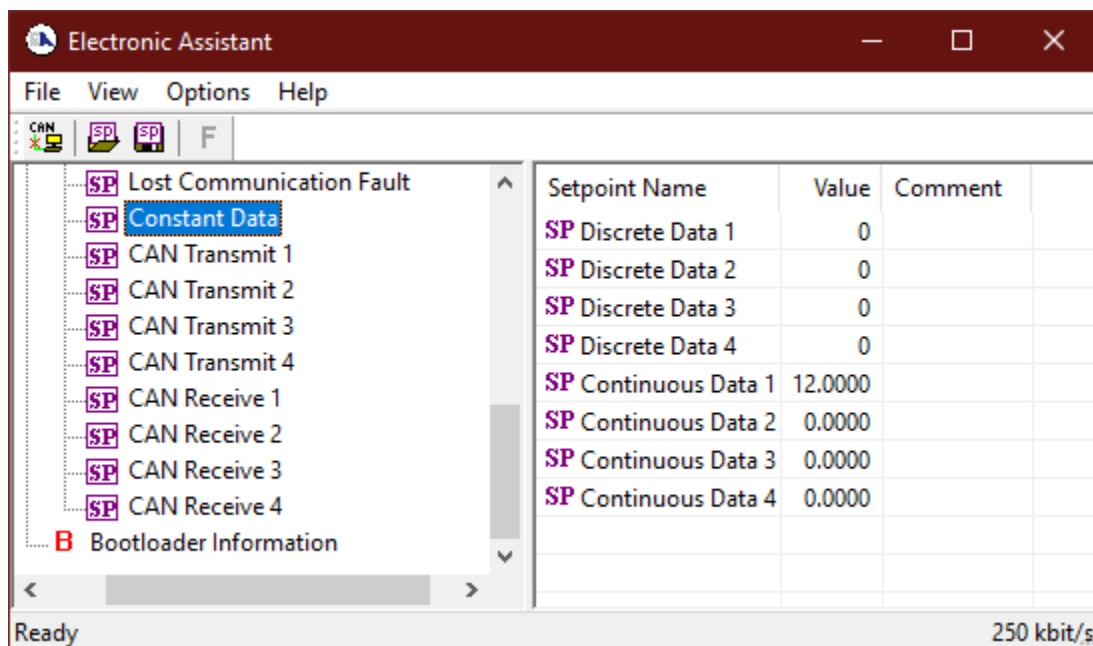
Screen Capture of Diagnostic Input Setpoints

| Name                         | Range      | Default  |
|------------------------------|------------|----------|
| Event Generates a DTC in DM1 | False/True | 1; True  |
| Event Only Cleared by DM11   | False/True | 0; False |
| Lamp Set by Event in DM1     | Drop List  | 0        |
| SPN for Event used in DTC    | 0...524287 | 0        |
| FMI for Event used in DTC    | Drop List  | 0        |
| Delay Before Sending DM1     | 0...60000  | 100      |

Table 23 – Default Diagnostic Input Setpoints

## 7.7. Constant Data

The Constant Data function block is defined in Section 6.7. Please refer to that section for detailed information about how all these setpoints are used.



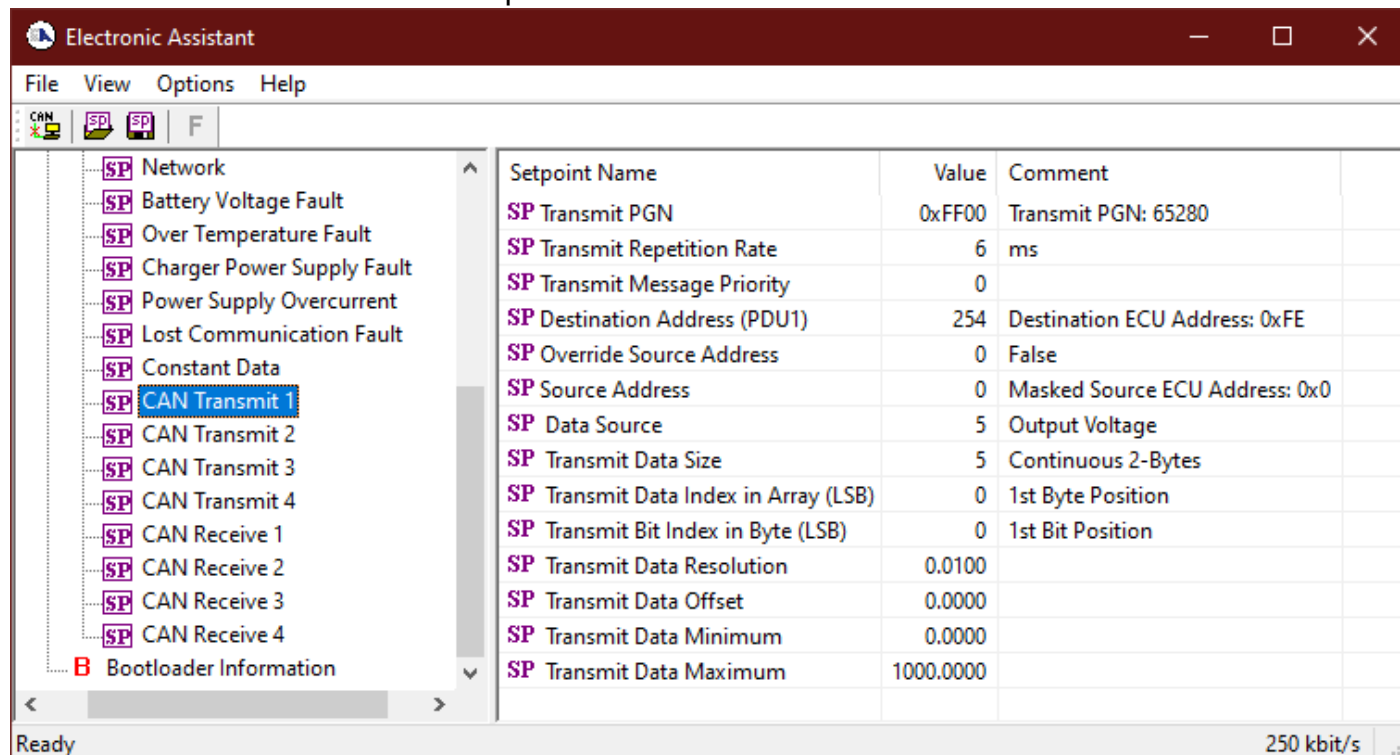
Screen Capture of Constant Data Setpoints

| Name              | Range                      | Default |
|-------------------|----------------------------|---------|
| Discrete Data 1   | 0 ... 4294967295           | 0       |
| Discrete Data 2   | 0 ... 4294967295           | 0       |
| Discrete Data 3   | 0 ... 4294967295           | 0       |
| Discrete Data 4   | 0 ... 4294967295           | 0       |
| Continuous Data 1 | -0xFFFFFFFF ... 0xFFFFFFFF | 0       |
| Continuous Data 2 | -0xFFFFFFFF ... 0xFFFFFFFF | 0       |
| Continuous Data 3 | -0xFFFFFFFF ... 0xFFFFFFFF | 0       |
| Continuous Data 4 | -0xFFFFFFFF ... 0xFFFFFFFF | 0       |

Table 24 – Default Constant Data Setpoints

## 7.8. CAN Transmit Setpoints

The CAN Transmit function block is defined in Section 6.8. Please refer to that section for detailed information about how all these setpoints are used.



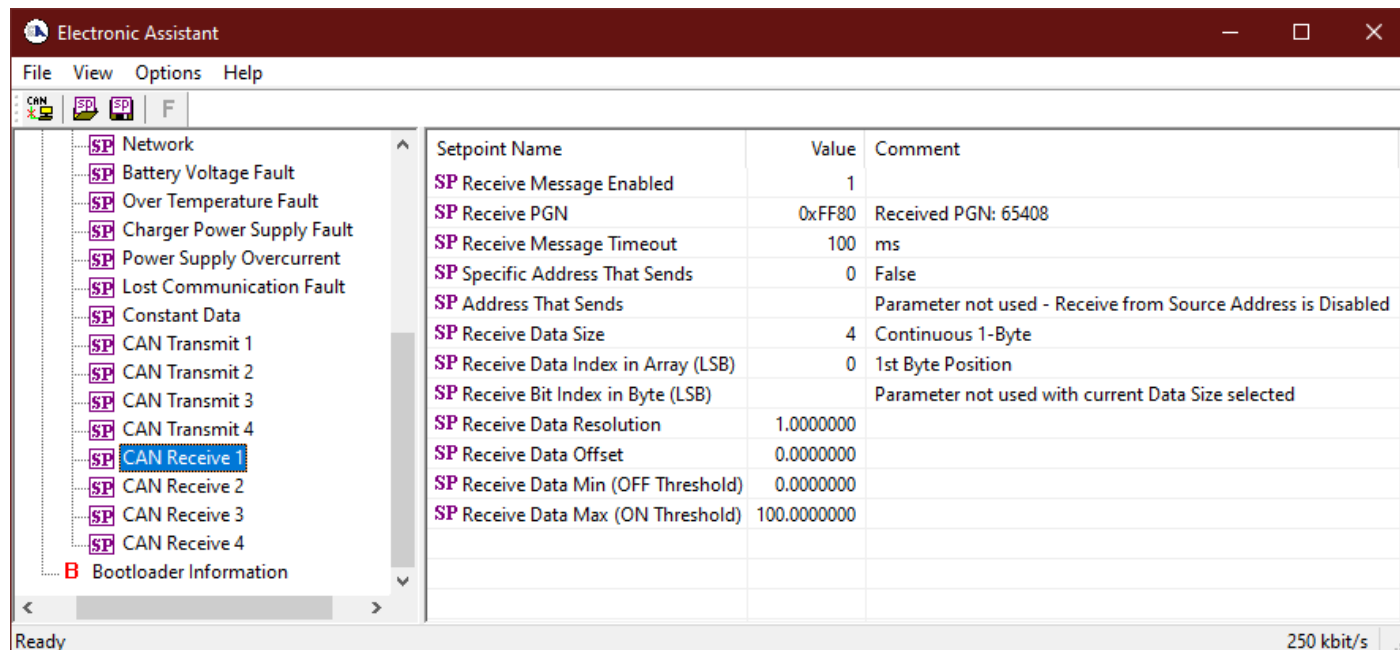
Screen Capture of CAN Transmit Setpoints

| Name  | Range                               | Default                  |
|---|-------------------------------------|--------------------------|
| Transmit PGN                                | 0...65535                           | 65280 (\$FF00)           |
| Transmit Repetition Rate                    | 0...60,000                          | 50                       |
| Transmit Message Priority                   | 0...7                               | 6                        |
| Destination Address (PDU1)                  | 0...255                             | 254                      |
| Override Source Address                     | False/True                          | 0; False                 |
| Source Address                              | 0...255                             | 0                        |
| Signal x Data Source                        | Drop List                           | Depends on signal number |
| Signal x Transmit Data Size                 | Drop List                           | Depends on signal number |
| Signal x Transmit Data Index in Array (LSB) | 0 to 8-DataSize                     | Depends on signal number |
| Signal x Transmit Bit Index in Byte (LSB)   | 0 to 8-DataSize                     | Depends on signal number |
| Signal x Transmit Data Resolution           | -10 <sup>6</sup> to 10 <sup>6</sup> | 1.0                      |
| Signal x Transmit Data Offset               | -10 <sup>4</sup> to 10 <sup>4</sup> | 0                        |
| Signal x Transmit Data Minimum              | -0xFFFFFFFF...DataMax               | 0                        |
| Signal x Transmit Data Maximum              | DataMin...0xFFFFFFFF                | Depends on signal number |

Table 25 – Default CAN Transmit Setpoints

## 7.9. CAN Receive Setpoints

The CAN Receive function block is defined in Section 6.9. Please refer to that section for detailed information about how all these setpoints are used.



Screen Capture of CAN Receive Setpoints

| Name                              | Range                               | Default           |
|-----------------------------------|-------------------------------------|-------------------|
| Receive Message Enable            | False/True                          | True              |
| Receive PGN                       | 0...65535                           | 65408 (\$FF80)    |
| Receive Message Timeout           | 0...60000                           | 100               |
| Specific Address That Sends       | False/True                          | True              |
| Address That Sends                | 0...255                             | 254 (\$FE)        |
| Receive Data Size                 | Drop List                           | Continuous 1-Byte |
| Receive Data Index in Array (LSB) | 0...8-DataSize                      | Byte 1            |
| Receive Bit Index in Byte (LSB)   | 0...8-DataSize                      | 0                 |
| Receive Data Resolution           | -10 <sup>6</sup> to 10 <sup>6</sup> | 1                 |
| Receive Data Offset               | -10 <sup>4</sup> to 10 <sup>4</sup> | 0                 |
| Receive Data Minimum              | -0xFFFFFFFF...DataMax               | 0                 |
| Receive Data Maximum              | DataMin...0xFFFFFFFF                | 0                 |

Table 26 – Default CAN Receive Setpoints

## 8. BATTERY CHARGER ERROR CODES

If the charging process fails, the battery charger will switch to either Battery Error or Module Error Mode, and an error code specifying the error will be generated.

The error code can be viewed through the RS232 interface selecting the Internal State of the Controller main menu item.

### 8.1. Battery Error Codes

| Error Code Name  | Error Code Value |
|--|------------------|
| NO_ERROR   | 0x00             |
| LOW_VOLTAGE_TO_START_PRECHARGE_BATTERY_ERROR               | 0x01             |
| OVERTEMPERATURE_IN_PRECHARGE_MODE_BATTERY_ERROR            | 0x02             |
| UNABLE_TO_MAINTAIN_CURRENT_IN_PRECHARGE_MODE_BATTERY_ERROR | 0x03             |
| PRECHARGE_TIME_OUT_BATTERY_ERROR                           | 0x04             |
| CHARGE_TIME_OUT_BATTERY_ERROR                              | 0x05             |
| OVERTEMPERATURE_IN_CHARGE_MODE_BATTERY_ERROR               | 0x06             |
| UNABLE_TO_MAINTAIN_CURRENT_IN_CHARGE_MODE_BATTERY_ERROR    | 0x07             |
| OVERTEMPERATURE_IN_CONST_VOLTAGE_MODE_BATTERY_ERROR        | 0x08             |
| OVERTEMPERATURE_IN_EQUALIZE_MODE_BATTERY_ERROR             | 0x09             |
| UNABLE_TO_MAINTAIN_CURRENT_IN_EQUALIZE_MODE_BATTERY_ERROR  | 0x0A             |
| OVERTEMPERATURE_IN_FLOAT_MODE_BATTERY_ERROR                | 0x0B             |
| OVERVOLTAGE_IN_PRECHARGE_MODE_BATTERY_ERROR                | 0x10             |
| LOW_POWER_IN_PRECHARGE_MODE_BATTERY_ERROR                  | 0x20             |
| OVERVOLTAGE_IN_CHARGE_MODE_BATTERY_ERROR                   | 0x30             |
| LOW_POWER_IN_CHARGE_MODE_BATTERY_ERROR                     | 0x40             |
| OVERVOLTAGE_IN_CONST_VOLTAGE_MODE_BATTERY_ERROR            | 0x50             |
| LOW_POWER_IN_CONST_VOLTAGE_MODE_BATTERY_ERROR              | 0x60             |
| OVERVOLTAGE_IN_EQUALIZE_MODE_BATTERY_ERROR                 | 0x70             |
| LOW_POWER_IN_EQUALIZE_MODE_BATTERY_ERROR                   | 0x80             |
| OVERVOLTAGE_IN_FLOAT_MODE_BATTERY_ERROR                    | 0x90             |
| LOW_POWER_IN_FLOAT_MODE_BATTERY_ERROR                      | 0xA0             |

### 8.2. Module Error Codes

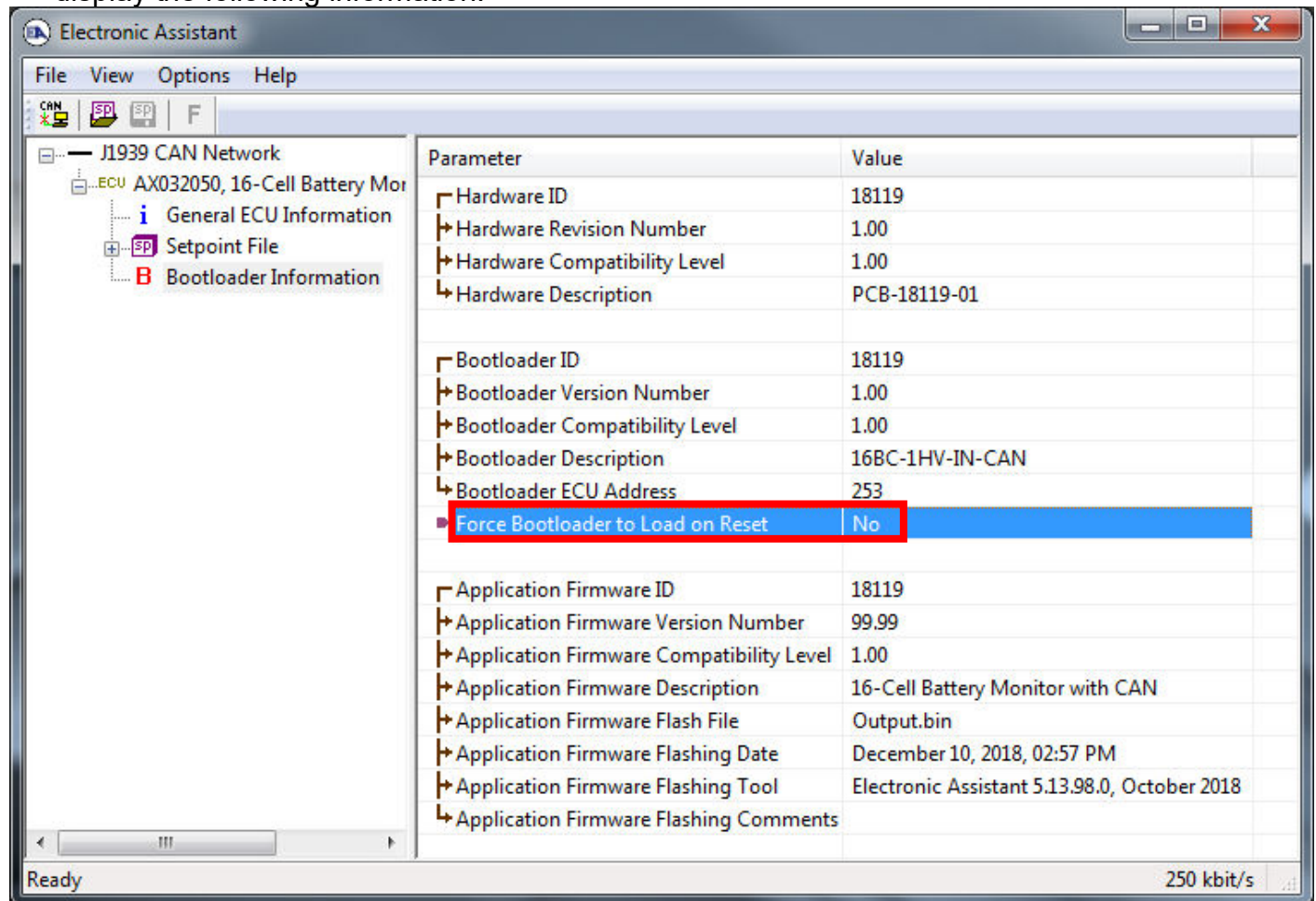
| Error Code Name                                | Error Code Value |
|--|------------------|
| OVERCURRENT_IN_PRECHARGE_MODE_MODULE_ERROR     | 0xF0             |
| OVERCURRENT_IN_CHARGE_MODE_MODULE_ERROR        | 0xF1             |
| OVERCURRENT_IN_CONST_VOLTAGE_MODE_MODULE_ERROR | 0xF2             |
| OVERCURRENT_IN_EQUALIZE_MODE_MODULE_ERROR      | 0xF3             |
| OVERCURRENT_IN_FLOAT_MODE_MODULE_ERROR         | 0xF4             |
| FLASH_MEMORY_MODULE_ERROR                      | 0xFF             |



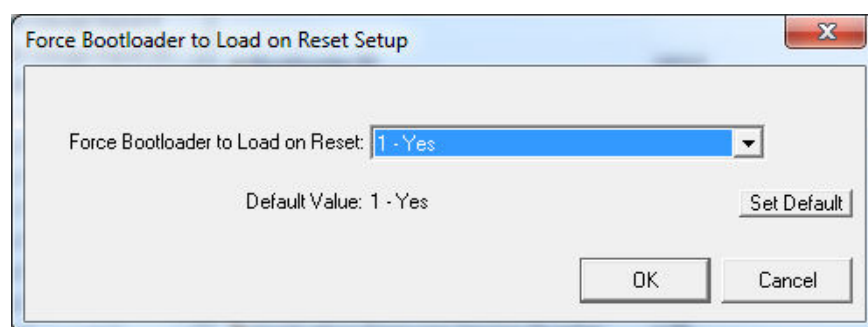
## 9. REFLASHING OVER CAN WITH THE AXIOMATIC EA BOOTLOADER

The AX090550 or AX090560 unit can be upgraded with new application firmware using the **Bootloader Information** section. This section details the simple step-by-step instructions to upload new firmware provided by Axiomatic onto the unit via CAN, without requiring it to be disconnected from the J1939 network.

1. When the Axiomatic EA first connects to the ECU, the **Bootloader Information** section will display the following information.

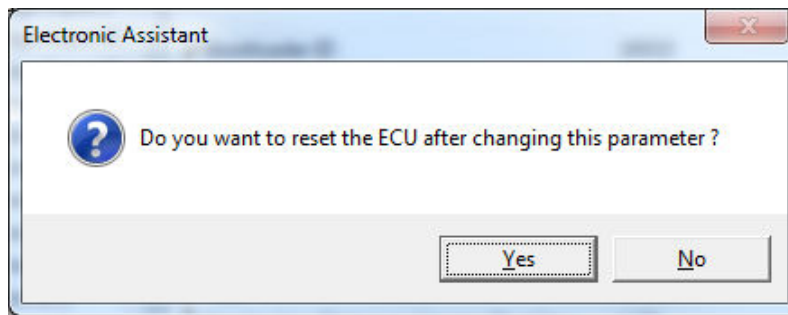


2. To use the bootloader to upgrade the firmware running on the ECU, change the variable “**Force Bootloader to Load on Reset**” to Yes.

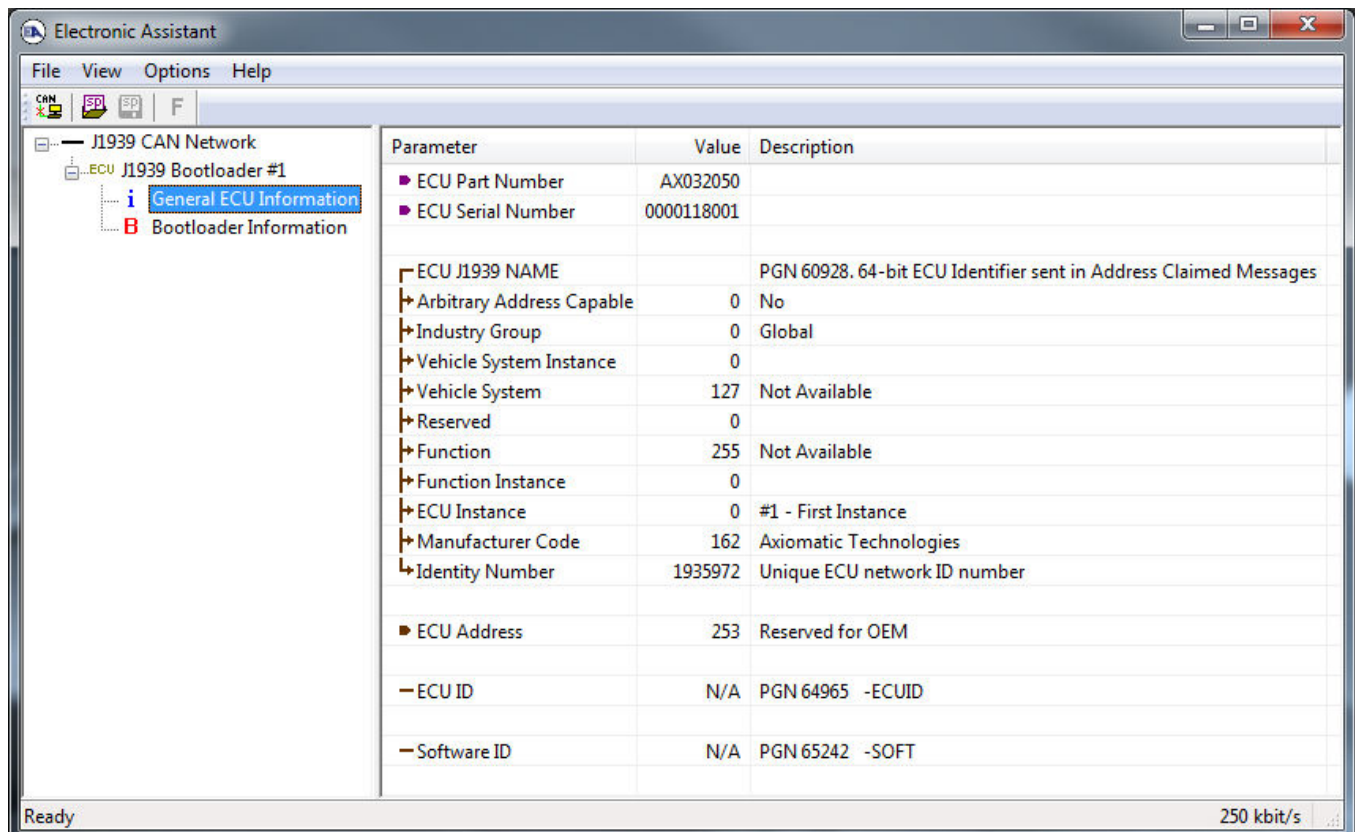
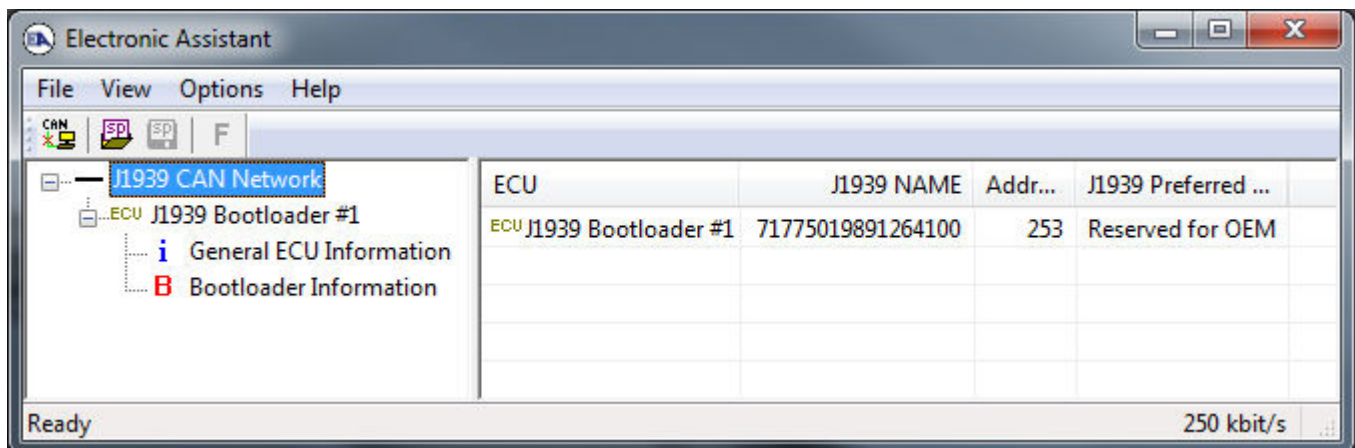


3. When the prompt box asks if you want to reset the ECU, select Yes.



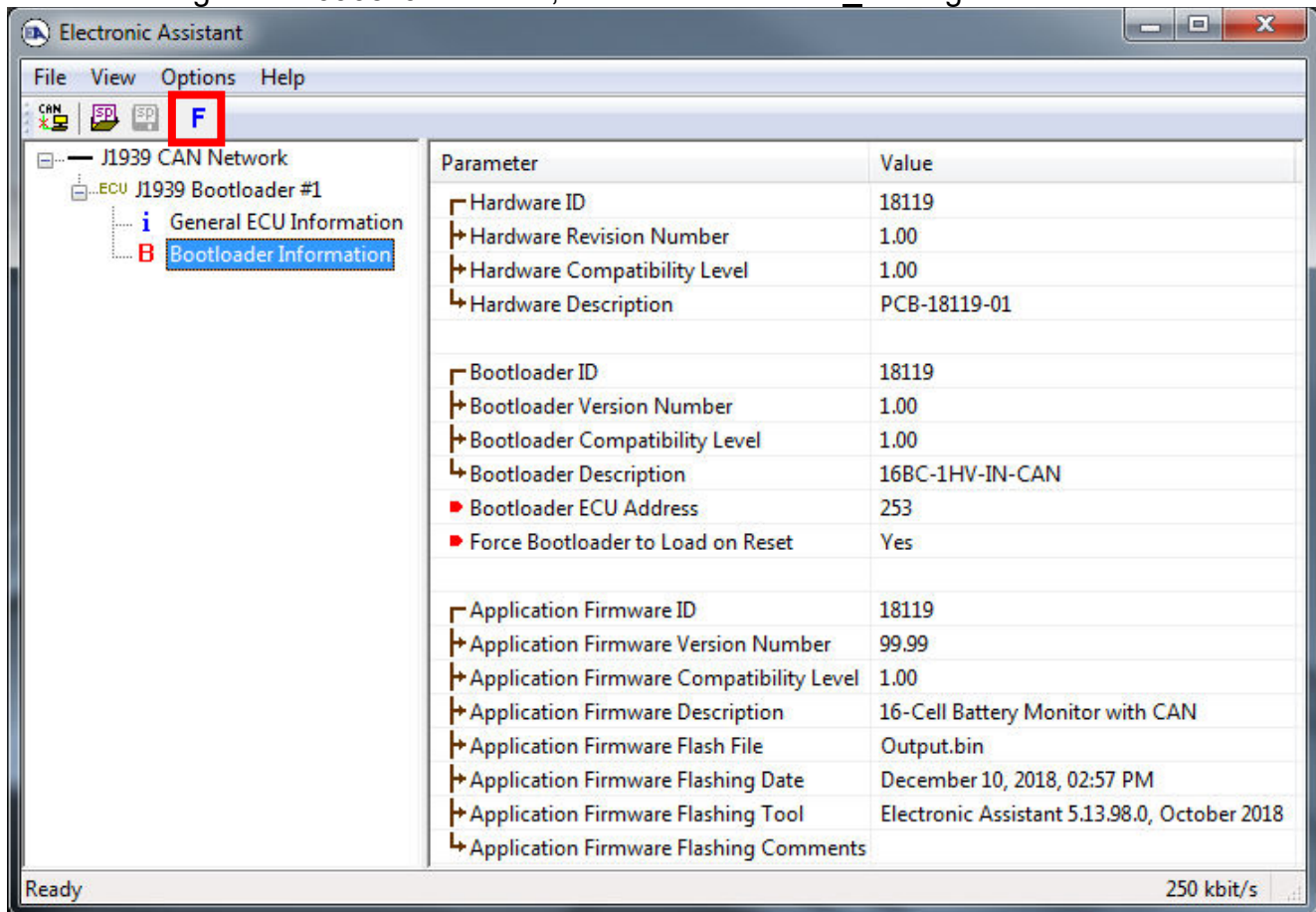


- Upon reset, the ECU will no longer show up on the J1939 network as an AX0905x0 but rather as **J1939 Bootloader #1**.



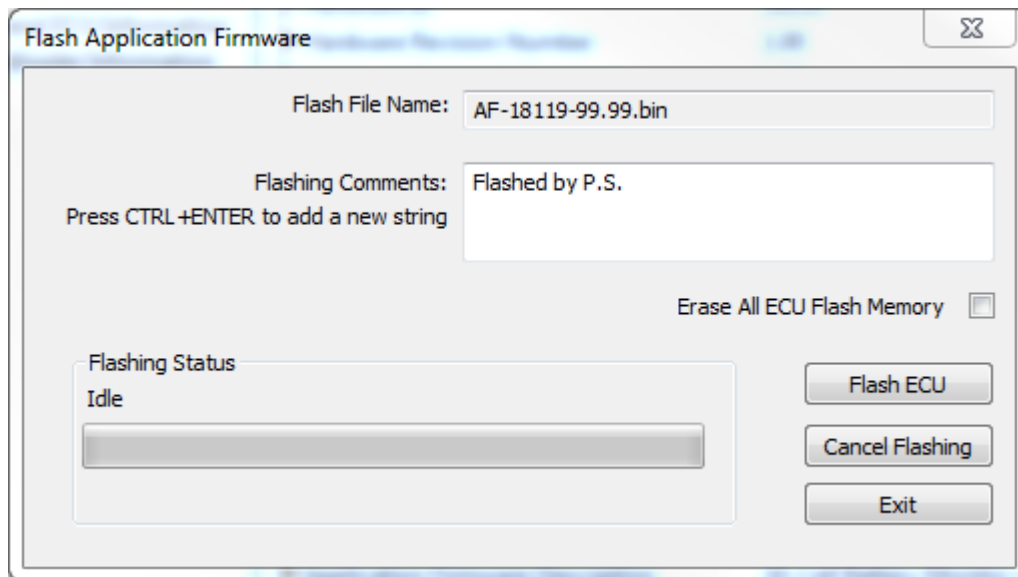
*Note that the bootloader is NOT Arbitrary Address Capable. This means that if you want to have multiple bootloaders running simultaneously (not recommended) you would have to manually change the address for each one before activating the next, or there will be address conflicts, and only one ECU would show up as the bootloader. Once the 'active' bootloader returns to regular functionality, the other ECU(s) would have to be power cycled to re-activate the bootloader feature.*

- When the **Bootloader Information** section is selected, the same information is shown as when it was running the AX0905x0 firmware, but in this case the **Flashing** feature has been enabled.



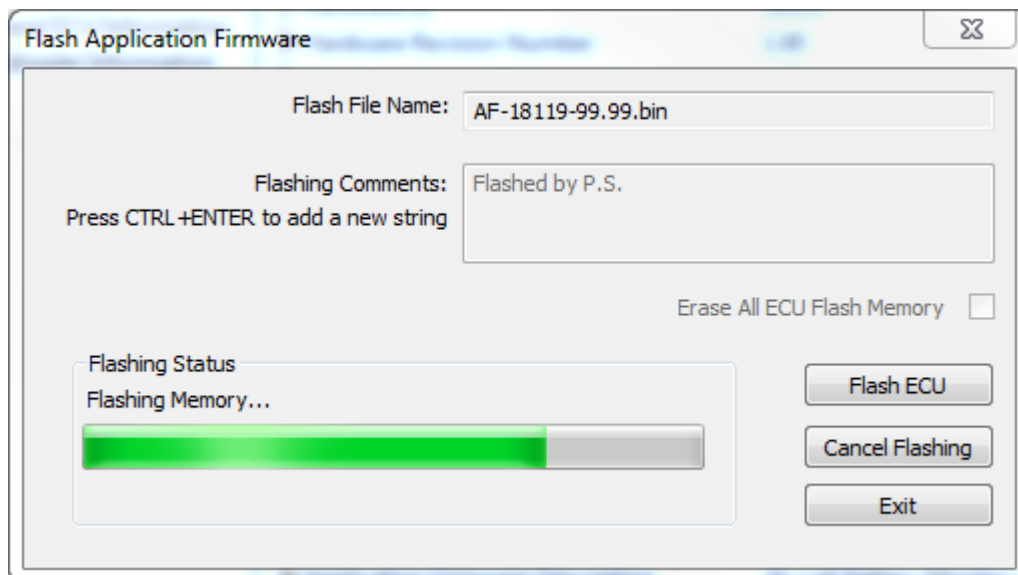
- Select the **Flashing** button and navigate to where you had saved the **AF-18123-x.yy.bin** or **AF-19146-x.yy.bin** file sent from Axiomatic. (Note: only binary (.bin) files can be flashed using the Axiomatic EA tool)
- Once the Flash Application Firmware window opens, you can enter comments such as "Firmware upgraded by [Name]" if you so desire. This is not required, and you can leave the field blank if you do not want to use it.

Note: You do not have to date/timestamp the file, as this is done automatically by the EA tool when you upload the new firmware.

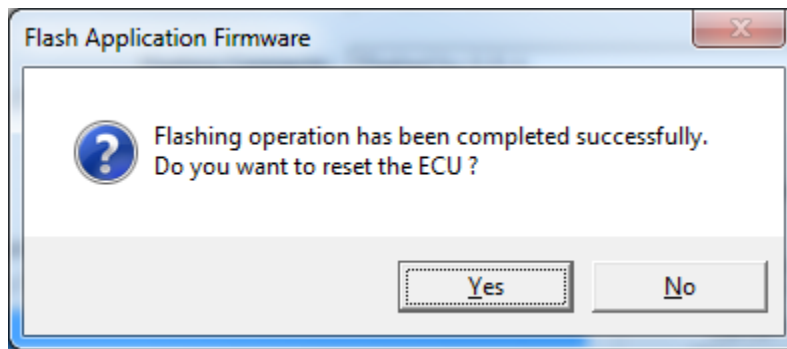


**WARNING:** Do not check the “Erase All ECU Flash Memory” box unless instructed to do so by your Axiomatic contact. Selecting this will erase ALL data stored in non-volatile flash. It will also erase any configuration of the setpoints that might have been done to the ECU and reset all setpoints to their factory defaults. By leaving this box unchecked, none of the setpoints will be changed when the new firmware is uploaded.

8. A progress bar will show how much of the firmware has been sent as the upload progresses. The more traffic there is on the J1939 network, the longer the upload process will take.

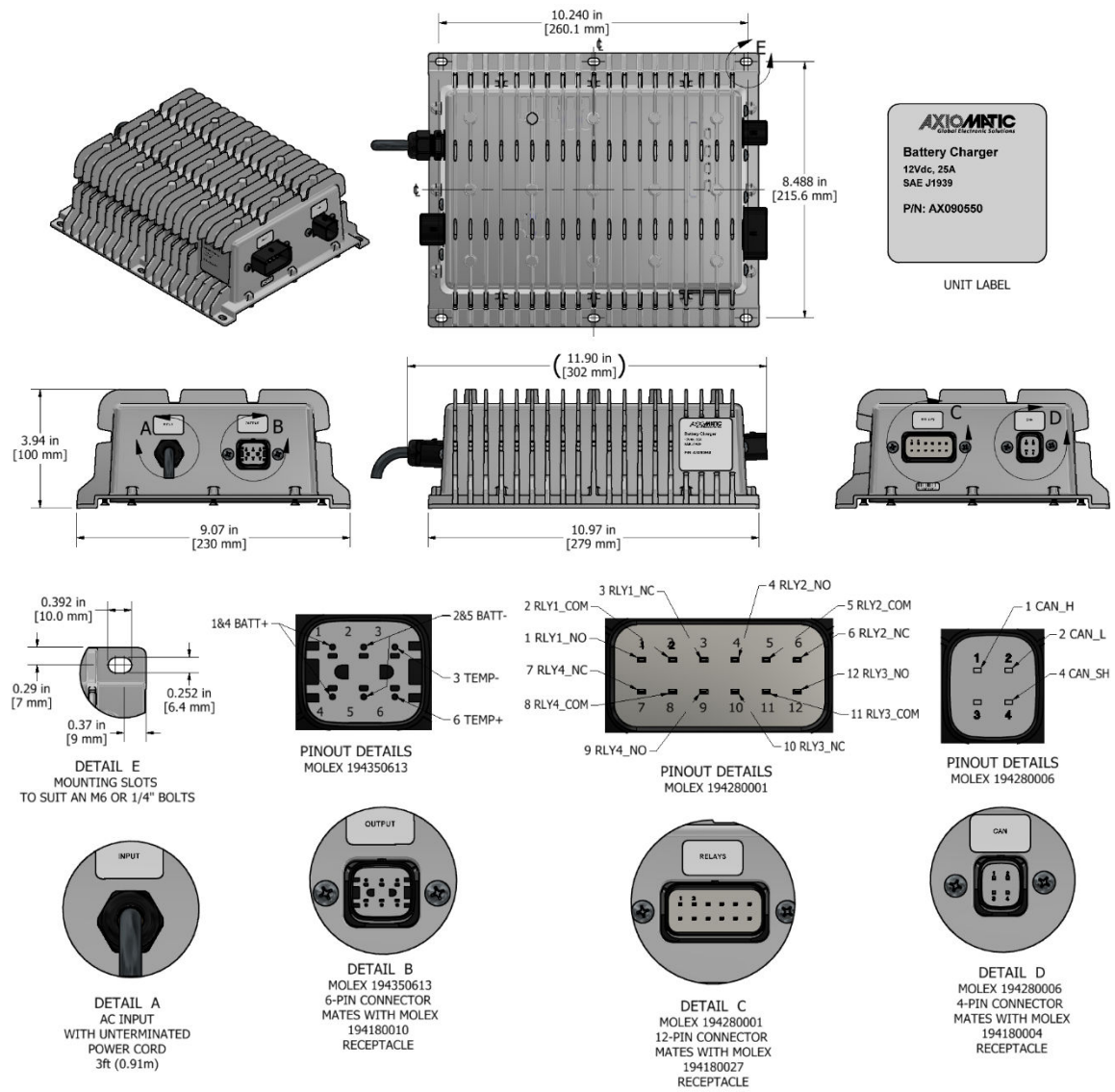


9. Once the firmware has finished uploading, a message will popup indicating the successful operation. If you select to reset the ECU, the new version of the AX0905x0 application will start running, and the ECU will be identified as such by the EA. Otherwise, the next time the ECU is power-cycled, the AX0905x0 application will run rather than the bootloader function.

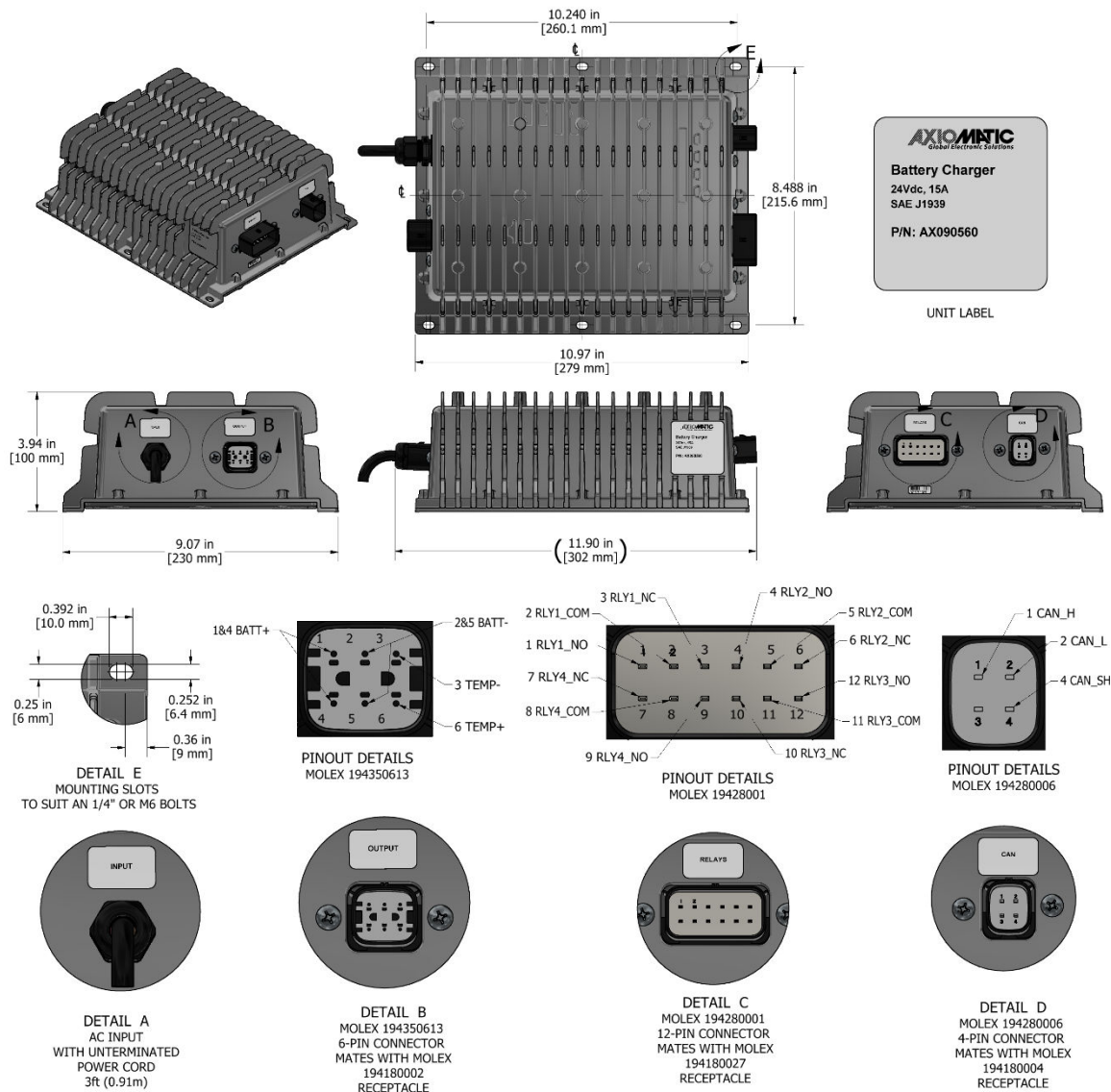


Note: If at any time during the upload the process is interrupted, the data is corrupted (bad checksum) or for any other reason the new firmware is not correct, i.e. bootloader detects that the file loaded was not designed to run on the hardware platform, the bad or corrupted application will not run. Rather, when the ECU is reset or power-cycled the **J1939 Bootloader** will continue to be the default application until valid firmware has been successfully uploaded into the unit.

10.INSTALLATION INSTRUCTIONS



Dimensional Drawing – AX090550



Dimensional Drawing – AX090560

| Electrical Connections | <p>1 4-pin Molex 194280006 (Mates with Molex 194180004 Receptacle)</p> <p><b>CAN Connector:</b></p> <table border="1"> <thead> <tr> <th>PIN#</th><th>Function</th></tr> </thead> <tbody> <tr> <td>1</td><td>CAN_H</td></tr> <tr> <td>2</td><td>CAN_L</td></tr> <tr> <td>3</td><td>Not Used</td></tr> <tr> <td>4</td><td>CAN_SH</td></tr> </tbody> </table> | PIN# | Function | 1 | CAN_H | 2 | CAN_L | 3 | Not Used | 4 | CAN_SH |
|------------------------|--|------|----------|---|-------|---|-------|---|----------|---|--------|
| PIN#                   | Function   |      |          |   |       |   |       |   |          |   |        |
| 1                      | CAN_H  |      |          |   |       |   |       |   |          |   |        |
| 2                      | CAN_L  |      |          |   |       |   |       |   |          |   |        |
| 3                      | Not Used   |      |          |   |       |   |       |   |          |   |        |
| 4                      | CAN_SH   |      |          |   |       |   |       |   |          |   |        |



|                   | <p>1 12-pin Molex 194280001 (Mates with Molex 194180027 Receptacle)</p> <p><b>Relay Outputs Connector:</b></p> <table> <tr> <th>PIN#</th><th>Function</th></tr> <tr> <td>1</td><td>Relay 1 NO</td></tr> <tr> <td>2</td><td>Relay 1 COM</td></tr> <tr> <td>3</td><td>Relay 1 NC</td></tr> <tr> <td>4</td><td>Relay 2 NO</td></tr> <tr> <td>5</td><td>Relay 2 COM</td></tr> <tr> <td>6</td><td>Relay 2 NC</td></tr> <tr> <td>7</td><td>Relay 4 NO</td></tr> <tr> <td>8</td><td>Relay 4 COM</td></tr> <tr> <td>9</td><td>Relay 4 NC</td></tr> <tr> <td>10</td><td>Relay 3 NC</td></tr> <tr> <td>11</td><td>Relay 3 COM</td></tr> <tr> <td>12</td><td>Relay 3 NO</td></tr> </table> <p>1 6-pin Molex 1943506011 (Mates with Molex 194180010 Receptacle)</p> <p><b>Battery Connector:</b></p> <table> <tr> <th>PIN#</th><th>Function</th></tr> <tr> <td>1</td><td>Output to Battery +</td></tr> <tr> <td>2</td><td>Output to Battery -</td></tr> <tr> <td>3</td><td>Battery Temperature -</td></tr> <tr> <td>4</td><td>Output to Battery +</td></tr> <tr> <td>5</td><td>Output to Battery -</td></tr> <tr> <td>6</td><td>Battery Temperature +</td></tr> </table> | PIN# | Function | 1 | Relay 1 NO | 2 | Relay 1 COM | 3 | Relay 1 NC | 4 | Relay 2 NO | 5 | Relay 2 COM | 6 | Relay 2 NC | 7 | Relay 4 NO | 8 | Relay 4 COM | 9 | Relay 4 NC | 10 | Relay 3 NC | 11 | Relay 3 COM | 12 | Relay 3 NO | PIN# | Function | 1 | Output to Battery + | 2 | Output to Battery - | 3 | Battery Temperature - | 4 | Output to Battery + | 5 | Output to Battery - | 6 | Battery Temperature + |
|-------------------|--|------|----------|---|------------|---|-------------|---|------------|---|------------|---|-------------|---|------------|---|------------|---|-------------|---|------------|----|------------|----|-------------|----|------------|------|----------|---|---------------------|---|---------------------|---|-----------------------|---|---------------------|---|---------------------|---|-----------------------|
| PIN#              | Function   |      |          |   |            |   |             |   |            |   |            |   |             |   |            |   |            |   |             |   |            |    |            |    |             |    |            |      |          |   |                     |   |                     |   |                       |   |                     |   |                     |   |                       |
| 1                 | Relay 1 NO   |      |          |   |            |   |             |   |            |   |            |   |             |   |            |   |            |   |             |   |            |    |            |    |             |    |            |      |          |   |                     |   |                     |   |                       |   |                     |   |                     |   |                       |
| 2                 | Relay 1 COM  |      |          |   |            |   |             |   |            |   |            |   |             |   |            |   |            |   |             |   |            |    |            |    |             |    |            |      |          |   |                     |   |                     |   |                       |   |                     |   |                     |   |                       |
| 3                 | Relay 1 NC   |      |          |   |            |   |             |   |            |   |            |   |             |   |            |   |            |   |             |   |            |    |            |    |             |    |            |      |          |   |                     |   |                     |   |                       |   |                     |   |                     |   |                       |
| 4                 | Relay 2 NO   |      |          |   |            |   |             |   |            |   |            |   |             |   |            |   |            |   |             |   |            |    |            |    |             |    |            |      |          |   |                     |   |                     |   |                       |   |                     |   |                     |   |                       |
| 5                 | Relay 2 COM  |      |          |   |            |   |             |   |            |   |            |   |             |   |            |   |            |   |             |   |            |    |            |    |             |    |            |      |          |   |                     |   |                     |   |                       |   |                     |   |                     |   |                       |
| 6                 | Relay 2 NC   |      |          |   |            |   |             |   |            |   |            |   |             |   |            |   |            |   |             |   |            |    |            |    |             |    |            |      |          |   |                     |   |                     |   |                       |   |                     |   |                     |   |                       |
| 7                 | Relay 4 NO   |      |          |   |            |   |             |   |            |   |            |   |             |   |            |   |            |   |             |   |            |    |            |    |             |    |            |      |          |   |                     |   |                     |   |                       |   |                     |   |                     |   |                       |
| 8                 | Relay 4 COM  |      |          |   |            |   |             |   |            |   |            |   |             |   |            |   |            |   |             |   |            |    |            |    |             |    |            |      |          |   |                     |   |                     |   |                       |   |                     |   |                     |   |                       |
| 9                 | Relay 4 NC   |      |          |   |            |   |             |   |            |   |            |   |             |   |            |   |            |   |             |   |            |    |            |    |             |    |            |      |          |   |                     |   |                     |   |                       |   |                     |   |                     |   |                       |
| 10                | Relay 3 NC   |      |          |   |            |   |             |   |            |   |            |   |             |   |            |   |            |   |             |   |            |    |            |    |             |    |            |      |          |   |                     |   |                     |   |                       |   |                     |   |                     |   |                       |
| 11                | Relay 3 COM  |      |          |   |            |   |             |   |            |   |            |   |             |   |            |   |            |   |             |   |            |    |            |    |             |    |            |      |          |   |                     |   |                     |   |                       |   |                     |   |                     |   |                       |
| 12                | Relay 3 NO   |      |          |   |            |   |             |   |            |   |            |   |             |   |            |   |            |   |             |   |            |    |            |    |             |    |            |      |          |   |                     |   |                     |   |                       |   |                     |   |                     |   |                       |
| PIN#              | Function   |      |          |   |            |   |             |   |            |   |            |   |             |   |            |   |            |   |             |   |            |    |            |    |             |    |            |      |          |   |                     |   |                     |   |                       |   |                     |   |                     |   |                       |
| 1                 | Output to Battery +  |      |          |   |            |   |             |   |            |   |            |   |             |   |            |   |            |   |             |   |            |    |            |    |             |    |            |      |          |   |                     |   |                     |   |                       |   |                     |   |                     |   |                       |
| 2                 | Output to Battery -  |      |          |   |            |   |             |   |            |   |            |   |             |   |            |   |            |   |             |   |            |    |            |    |             |    |            |      |          |   |                     |   |                     |   |                       |   |                     |   |                     |   |                       |
| 3                 | Battery Temperature -  |      |          |   |            |   |             |   |            |   |            |   |             |   |            |   |            |   |             |   |            |    |            |    |             |    |            |      |          |   |                     |   |                     |   |                       |   |                     |   |                     |   |                       |
| 4                 | Output to Battery +  |      |          |   |            |   |             |   |            |   |            |   |             |   |            |   |            |   |             |   |            |    |            |    |             |    |            |      |          |   |                     |   |                     |   |                       |   |                     |   |                     |   |                       |
| 5                 | Output to Battery -  |      |          |   |            |   |             |   |            |   |            |   |             |   |            |   |            |   |             |   |            |    |            |    |             |    |            |      |          |   |                     |   |                     |   |                       |   |                     |   |                     |   |                       |
| 6                 | Battery Temperature +  |      |          |   |            |   |             |   |            |   |            |   |             |   |            |   |            |   |             |   |            |    |            |    |             |    |            |      |          |   |                     |   |                     |   |                       |   |                     |   |                     |   |                       |
| Power Connection  | <p>Power Cable:</p> <p>Heyco 3213 sealed cable gland</p> <p>Integral 3 ft. (0.9 m) <b>unterminated power cable</b>.</p> <p>The power plug is not supplied.</p> <p>Black Wire: Live</p> <p>White Wire: Neutral</p> <p>Green Wire: Ground</p>  |      |          |   |            |   |             |   |            |   |            |   |             |   |            |   |            |   |             |   |            |    |            |    |             |    |            |      |          |   |                     |   |                     |   |                       |   |                     |   |                     |   |                       |
| Mating Connectors | Mating plug kits can be ordered from Axiomatic.  |      |          |   |            |   |             |   |            |   |            |   |             |   |            |   |            |   |             |   |            |    |            |    |             |    |            |      |          |   |                     |   |                     |   |                       |   |                     |   |                     |   |                       |
| Mounting          | Use 6 M8 or 5/16 inch bolts to mount the device.   |      |          |   |            |   |             |   |            |   |            |   |             |   |            |   |            |   |             |   |            |    |            |    |             |    |            |      |          |   |                     |   |                     |   |                       |   |                     |   |                     |   |                       |

## 11. TECHNICAL SPECIFICATIONS

Specifications are indicative and subject to change. Actual performance will vary depending on the application and operating conditions. Users should satisfy themselves that the product is suitable for use in the intended application. All our products carry a limited warranty against defects in material and workmanship. Please refer to our Warranty, Application Approvals/Limitations and Return Materials Process as described on <https://www.axiomatic.com/service/>.

### 11.1. Input Specifications

|                              |  |
|------------------------------|--|
| Power Supply Input - Nominal | 120 VAC, 208VAC or 240VAC nominal<br>95 to 260 VAC, 45/65 Hz power supply range<br>(60 Hz units and 50/60 Hz units)<br>Power factor correction >0.99<br>Two internal fuses L and N, 8A, 250VAC |
| Surge Protection             | Provided   |
| Under-voltage Protection     | Provided   |
| Over-voltage Protection      | Provided   |

### 11.2. Output Specifications

|  |   |
|--|---|
| Output to Battery  | Model AX090550: Maximum output is 350 Watts @ 14VDC, 25A<br>Model AX090560: Maximum output is 405 Watts @ 27VDC, 15A  |
| Protection Against Reverse Battery Connection  | Provided  |
| Over-voltage Protection  | Provided  |
| Battery Charger Mode:<br>Output Voltage and Current<br>(nominal depending on settings) | User configurable<br>Model AX090550:<br>Voltage: 10 – 15 VDC depending on the charging mode and user configuration.<br>Current: 0.5 – 25 ADC depending on the charging mode and user configuration.<br><br>Model AX090560:<br>Voltage: 10 – 30 VDC depending on the charging mode and user configuration.<br>Current: 0.5 – 15 ADC depending on the charging mode and user configuration. |
| AC/DC Power Supply Mode  | User Configurable<br>Output 5V-24Vdc<br>up to 15A   |
| Output Voltage and Current<br>(nominal depending on settings)                          | User configurable<br>Voltage: 2.5 – 30 VDC depending on the charging mode and user configuration.<br>Current: 0.5 – 15 ADC depending on the charging mode and user configuration.   |
| Thermal Protection   | A connection point is provided for an external NTC thermistor (not supplied) to protect the battery. The input is 5V via a 1K00 Ohm pull-up resistor inside the charger.  |
| Relay Outputs  | 4 independent alarms for AC fail, charger fail, low battery volts, high battery volts to meet NFPA 110 requirements or for other functions<br>Dry contacts (FORM C)<br>Rating of relays: 2A max @ 30Vdc (resistive load), UL Class 2  |



### 11.3. General Specifications

|  |  |
|--|--|
| Microcontroller                              | STM32F205VGT7, 32-bit, 1MByte flash memory   |
| Control Logic                                | Standard embedded software<br>Battery charger setpoints can be viewed and configured through the CAN bus using the Axiomatic Electronic Assistant (EA).  |
| Recommended Battery Type                     | Model AX090550: Generic automotive 12V rechargeable lead acid batteries<br>Model AX090560: Generic automotive 24V rechargeable lead acid batteries<br>Other battery chemistries are available on request.  |
| Recommended Battery Capacity                 | Up to 100 Ah   |
| Efficiency                                   | 90% @ max. load and 240VAC<br>87% @ max. load and 120VAC   |
| Diagnostics                                  | The charger's dynamic parameters, voltage and current are broadcast over the J1939 network.  |
| LED  | LED Indicator<br>Refer to User Manual Section 4.0 for details.   |
| User Interface                               | Axiomatic Electronic Assistant KIT, P/Ns: AX070502, or AX070506K, for Windows operating systems.<br>It comes with a royalty-free license for use on multiple computers.  |
| CAN Interface                                | 1 CAN port (ISO 11898 compatible)<br>Termination resistor is not installed.<br>SAE J1939 stack; Baud Rate: 250 bit/sec.  |
| Optional Communication Interfaces            | The following converters can be installed to interface with industrial fieldbus communications or wireless communications.<br>CAN/Bluetooth Converter: AX141100<br>CAN/CAN/Modbus RTU Converter: AX140100<br>CAN/Ethernet Converter: AX140900  |
| Fusing                                       | Model AX090550: An external output fuse of 30 Amps is recommended.<br>Model AX090560: An external output fuse of 20 Amps is recommended.   |
| Operating Temperature (ambient)              | -40 to 70°C (-40 to 158°F) for input >170 VAC,<br>-40 to 60°C (-40 to 140°F) for input 90 to 170 VAC   |
| Storage Temperature                          | -40 to 105°C (-40 to 221°F)  |
| Protection Rating                            | OEM model: IP67  |
| Enclosure and Dimensions-<br>Battery Charger | ACD12 Die Cast Aluminum Enclosure and Lid, Hard Anodized to MIL-A-8625 Type II Class I Clear Hard Anodize<br>Molded EPDM Gasket<br>Molex Connectors (See electrical connections.)<br>11.83 x 8.74 x 3.88 inches (300 x 222 x 98 mm)<br>L x W x H excluding power cable assembly<br>Refer to the dimensional drawing, Figure 1.0. |
| Weight                                       | 4.726 kg (10.420 lb.)  |

## 12. VERSION HISTORY

---

| Version | Date              | Author          | Modifications   |
|---------|-------------------|-----------------|---|
| 1.0     | January 8, 2020   | Peter Sotirakos | Initial Draft; Modified UMAX090550 V1 User Manual to include AX090560 information |
| 1.1     | March 9, 2020     | Peter Sotirakos | Dimensional Drawing and corresponding references updated.                         |
| 1.2     | June 3, 2020      | Peter Sotirakos | Dimensional Drawing and corresponding references updated.                         |
| 1.3     | August 4, 2020    | Peter Sotirakos | LED Indicator section removed. Battery Charger State table added.                 |
| 2.0     | November 24, 2020 | Peter Sotirakos | Updated for firmware version V2.00  |
| 2.1     | April 6, 2021     | Peter Sotirakos | Updated for firmware version V2.01  |
| 2.2     | July 27, 2023     | M Ejaz          | Added product weight<br>Updated Technical Specifications<br>Fixed legacy issues   |
| 2.3     | September 7, 2023 | Kiril Mojsov    | Fixed further legacy issues   |

## OUR PRODUCTS

AC/DC Power Supplies  
Actuator Controls/Interfaces  
Automotive Ethernet Interfaces  
Battery Chargers  
CAN Controls, Routers, Repeaters  
CAN/WiFi, CAN/Bluetooth, Routers  
Current/Voltage/PWM Converters  
DC/DC Power Converters  
Engine Temperature Scanners  
Ethernet/CAN Converters,  
Gateways, Switches  
Fan Drive Controllers  
Gateways, CAN/Modbus, RS-232  
Gyroscopes, Inclometers  
Hydraulic Valve Controllers  
Inclometers, Triaxial  
I/O Controls  
LVDT Signal Converters  
Machine Controls  
Modbus, RS-422, RS-485 Controls  
Motor Controls, Inverters  
Power Supplies, DC/DC, AC/DC  
PWM Signal Converters/Isolators  
Resolver Signal Conditioners  
Service Tools  
Signal Conditioners, Converters  
Strain Gauge CAN Controls  
Surge Suppressors

## OUR COMPANY

Axiomatic provides electronic machine control components to the off-highway, commercial vehicle, electric vehicle, power generator set, material handling, renewable energy and industrial OEM markets. ***We innovate with engineered and off-the-shelf machine controls that add value for our customers.***

## QUALITY DESIGN AND MANUFACTURING

We have an ISO9001:2015 registered design/manufacturing facility in Canada.

## WARRANTY, APPLICATION APPROVALS/LIMITATIONS

Axiomatic Technologies Corporation reserves the right to make corrections, modifications, enhancements, improvements, and other changes to its products and services at any time and to discontinue any product or service without notice. Customers should obtain the latest relevant information before placing orders and should verify that such information is current and complete. Users should satisfy themselves that the product is suitable for use in the intended application. All our products carry a limited warranty against defects in material and workmanship. Please refer to our Warranty, Application Approvals/Limitations and Return Materials Process at <https://www.axiomatic.com/service/>.

## COMPLIANCE

Product compliance details can be found in the product literature and/or on [axiomatic.com](http://axiomatic.com). Any inquiries should be sent to [sales@axiomatic.com](mailto:sales@axiomatic.com).

## SAFE USE

All products should be serviced by Axiomatic. Do not open the product and perform the service yourself.



This product can expose you to chemicals which are known in the State of California, USA to cause cancer and reproductive harm. For more information go to [www.P65Warnings.ca.gov](http://www.P65Warnings.ca.gov).

## SERVICE

All products to be returned to Axiomatic require a Return Materials Authorization Number (RMA#) from [sales@axiomatic.com](mailto:sales@axiomatic.com). Please provide the following information when requesting an RMA number:

- Serial number, part number
- Runtime hours, description of problem
- Wiring set up diagram, application and other comments as needed

## DISPOSAL

Axiomatic products are electronic waste. Please follow your local environmental waste and recycling laws, regulations and policies for safe disposal or recycling of electronic waste.

## CONTACTS

**Axiomatic Technologies Corporation**  
1445 Courtneypark Drive E.  
Mississauga, ON  
CANADA L5T 2E3  
TEL: +1 905 602 9270  
FAX: +1 905 602 9279  
[www.axiomatic.com](http://www.axiomatic.com)  
[sales@axiomatic.com](mailto:sales@axiomatic.com)

**Axiomatic Technologies Oy**  
Höytämöntie 6  
33880 Lempäälä  
FINLAND  
TEL: +358 103 375 750  
[www.axiomatic.com](http://www.axiomatic.com)  
[salesfinland@axiomatic.com](mailto:salesfinland@axiomatic.com)